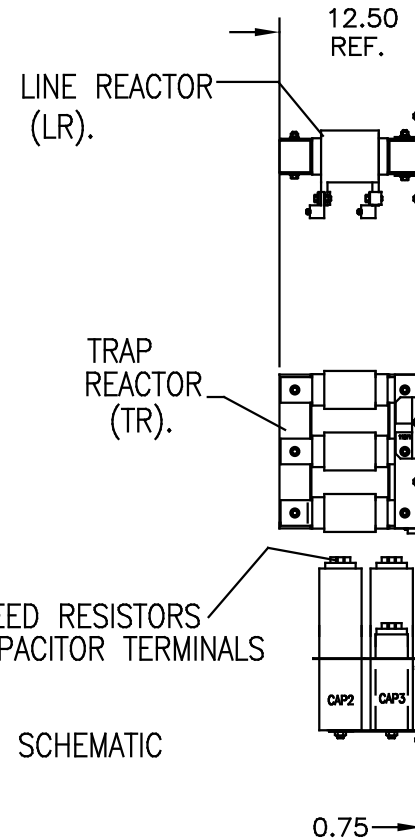
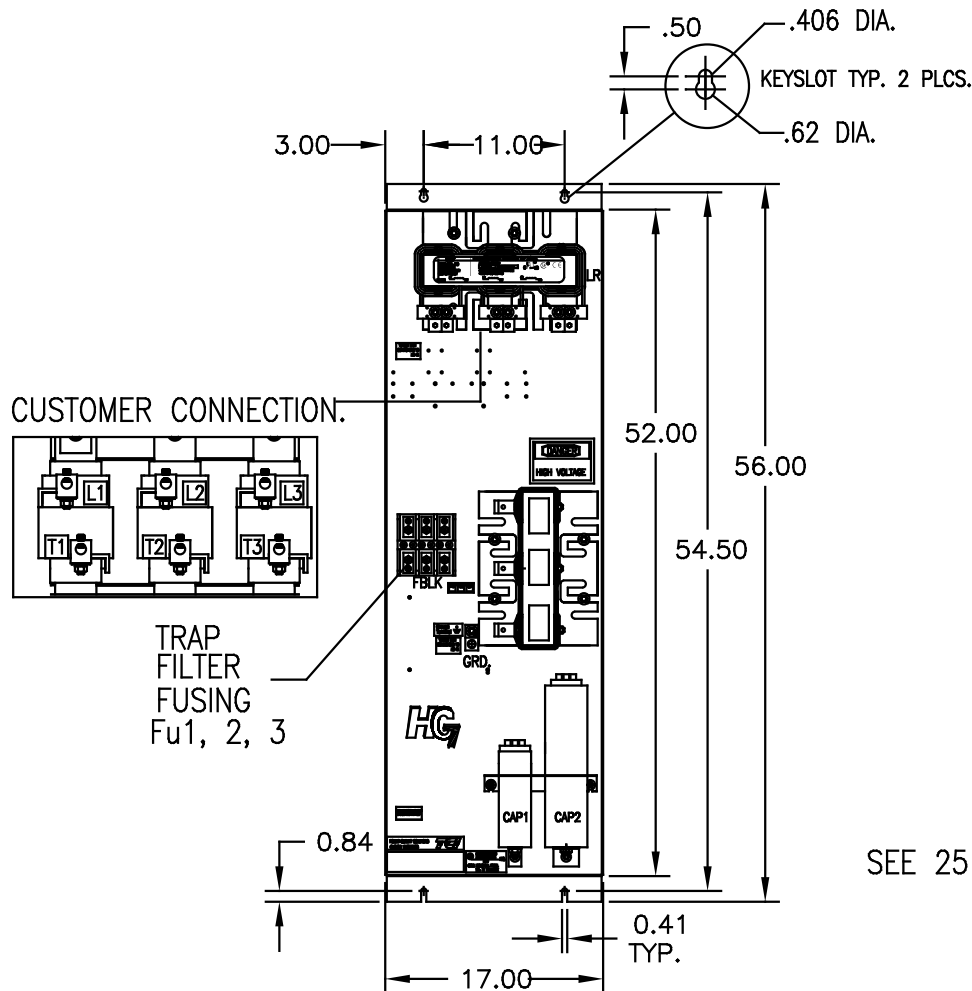


UNIT SPECIFICATIONS:					
KVAR	HARMONIC	VOLT	HZ	PHASE	HP
45	5TH	600	60	3	150
ENCLOSURE		WHITE OPEN PANEL			
APPROX.WT. LBS.		260			

SYMBOL	TCI PART NUMBER
LR	KDRL42T
TR	KTR45C65HG
CAP1. 5 KVAR	17815
CAP2, CAP3. 20 KVAR	18612
Fu1, 2, 3	15740



SEE 25115 FOR SCHEMATIC

CUSTOMER CONNECTIONS  
 WIRE RANGE- 250MCM-6  
 TIGHTENING TORQUE 275 IN-LB.

GROUND LUG:  
 WIRE RANGE- 250MCM-6  
 TIGHTENING TORQUE 275 IN-LB.

CUSTOMER IS RESPONSIBLE FOR PROPER COOLING OF FILTER COMPONENTS.  
 CAPACITORS MAXIMUM AMBIENT 50°C

CUSTOMER IS RESPONSIBLE FOR INSTALLATION TO MEET ALL NATIONAL AND LOCAL ELECTRICAL CODES.

NO	REVISION	DATE	BY	TOLERANCES (UNLESS AS NOTED)	DESIGN	DATE BY	DATE	DATE	DATE	NO.
				.XX ±.03						
				.XXX±.01						
				FRACTIONAL ± 1/32						
				ANGULAR ± 1/2°						
						DSW	03/11/05			102494DG
						TO FIT				C

**TCI** 7878 N. 86th STREET  
 MILWAUKEE, WI 53224

HG150CW00ST, HG7 STANDARD  
 150HP, 600/3/60 OPEN

SOLE TO FIT