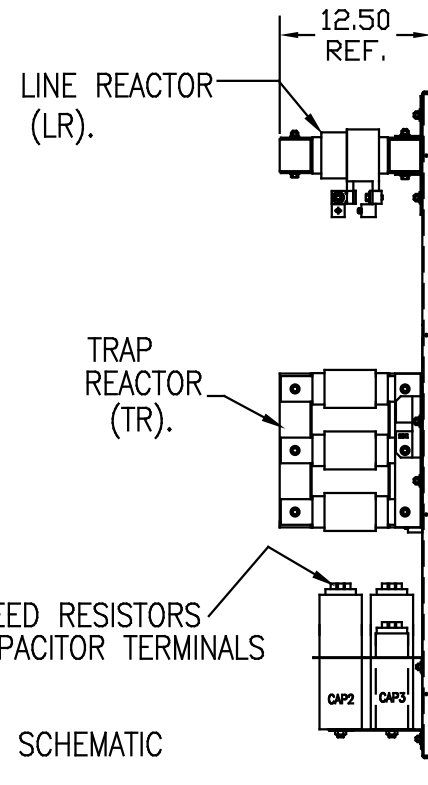
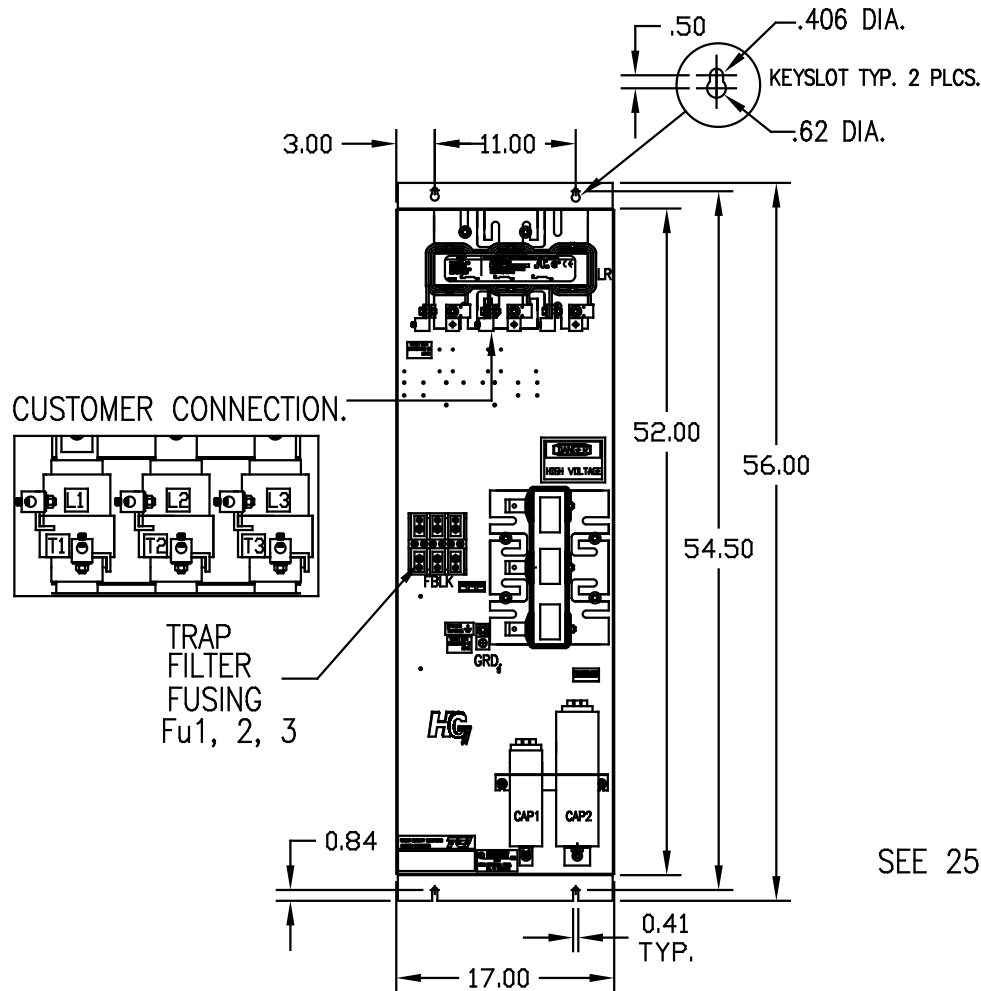


UNIT SPECIFICATIONS:					
KVAR	HARMONIC	VOLT	HZ	PHASE	HP
45	5TH	480	60	3	150
ENCLOSURE		WHITE OPEN PANEL			
APPROX.WT. LBS.		260			

SYMBOL	TCI PART NUMBER
LR	KDRL2T
TR	KTR45A65HG
CAP1	16447
CAP2, CAP3.	23123
Fu1, 2, 3	11077



SEE 25078 FOR SCHEMATIC

CUSTOMER CONNECTIONS
 WIRE RANGE- 250MCM-6
 TIGHTENING TORQUE 275 IN-LB.

GROUND LUG:
 WIRE RANGE- 250MCM-6
 TIGHTENING TORQUE 275 IN-LB.

CUSTOMER IS RESPONSIBLE FOR PROPER
 COOLING OF FILTER COMPONENTS.
 CAPACITORS MAXIMUM AMBIENT 50°C

CUSTOMER IS RESPONSIBLE FOR INSTALLATION
 TO MEET ALL NATIONAL AND LOCAL ELECTRICAL CODES.

				TOLERANCES EXCEPT AS NOTED:	TCI 7878 N. 86th STREET MILWAUKEE, WI 53224
				DECIMAL	
				.XX ± .03	HG150AW00ST, HG7 STANDARD 150HP, 480/3/60 OPEN
				.XXX ± .01	
				FRACTIONAL ± 1/32	
				ANGULAR ± 1/2°	
NO	REVISION	DATE	BY	SCALE TO FIT	DRG BY DSW DATE 03/04/05 DWG. NO. 102547DG APPROVAL C
					SHT. 1 OF 1