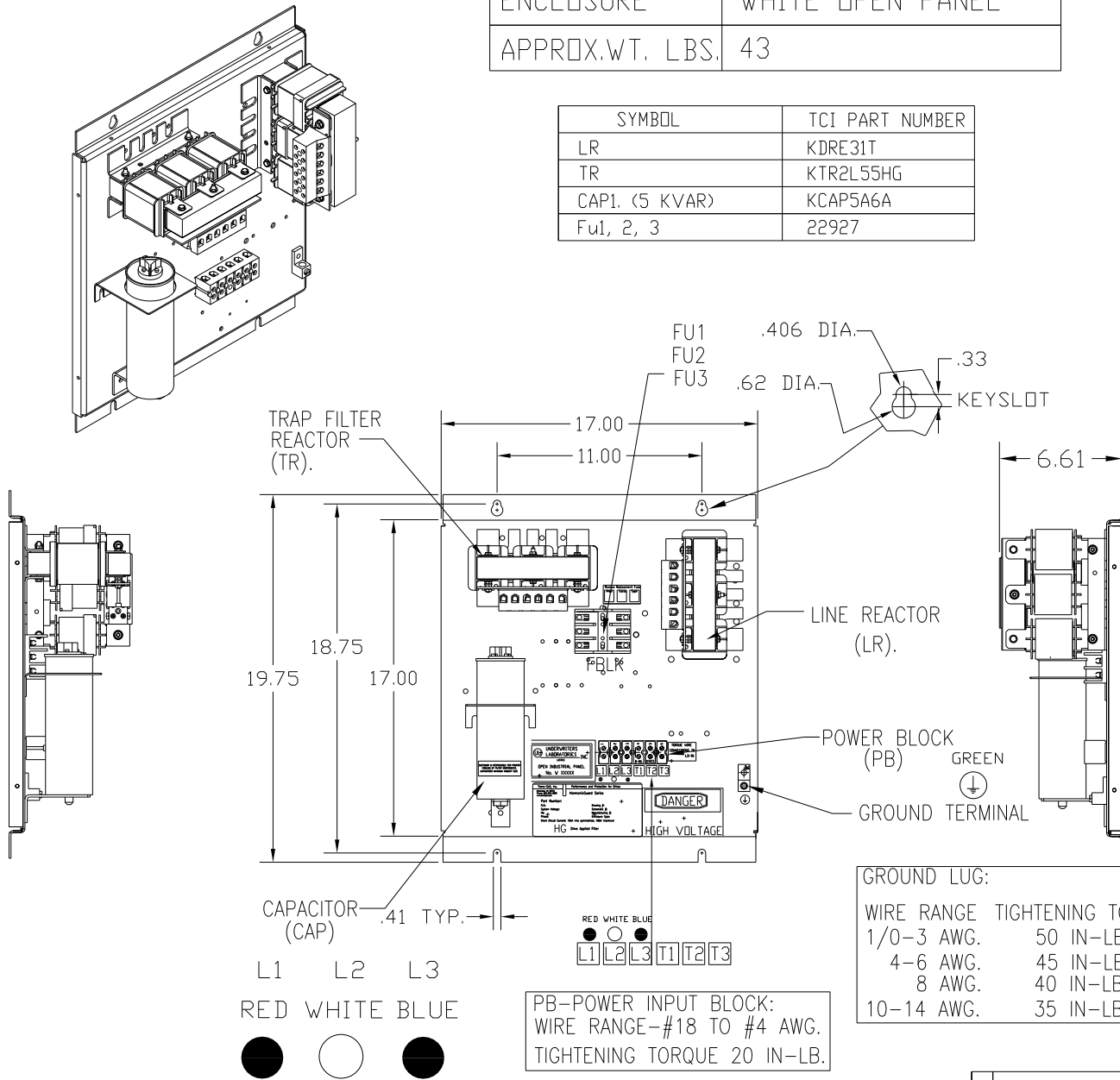


UNIT SPECIFICATIONS:

KW	HARMONIC	VOLT	HZ	PHASE	FLA
7.5	5TH	400	50	3	16
ENCLOSURE		WHITE OPEN PANEL			
APPROX.WT. LBS.		43			

SYMBOL	TCI PART NUMBER
LR	KDRE31T
TR	KTR2L55HG
CAP1. (5 KVAR)	KCAP5A6A
Fu1, 2, 3	22927



GROUND LUG:

WIRE RANGE	TIGHTENING TORQUE.
1/0-3 AWG.	50 IN-LBS
4-6 AWG.	45 IN-LBS
8 AWG.	40 IN-LBS
10-14 AWG.	35 IN-LBS

PB-POWER INPUT BLOCK:
WIRE RANGE-#18 TO #4 AWG.
TIGHTENING TORQUE 20 IN-LBS.

CUSTOMER IS RESPONSIBLE FOR PROPER COOLING OF FILTER COMPONENTS. CAPACITORS MAXIMUM AMBIENT 50°C.

CUSTOMER IS RESPONSIBLE FOR INSTALLATION TO MEET ALL NATIONAL AND LOCAL ELECTRICAL CODES.

SEE DWG# 27709 FOR SCHEMATIC

				TOLERANCES (EXCEPT AS NOTED)		7878 N. 86th STREET MILWAUKEE, WI 53224	
				DECIMAL			
				XX ± .03		HG7LW00ST, 7.5KW 400/3/50, OPEN	
				XXX ± .01			
				FRACTIONAL ± 1/32			
				ANGULAR ± 1/2°		DRN. BY DSW DATE 05/11/2011 DWG. NO. 104660DG SCALE TO FIT APRVD	
A	AS BUILT	5/10/11	DSW				
NO	REVISION	DATE	BY				