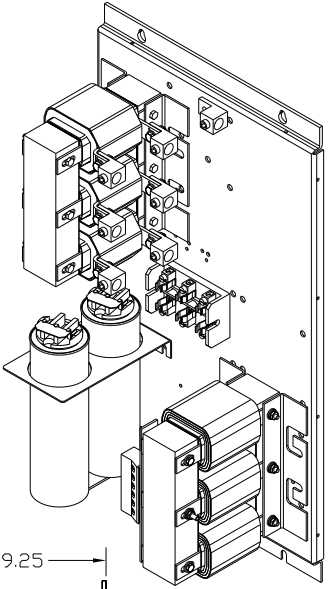
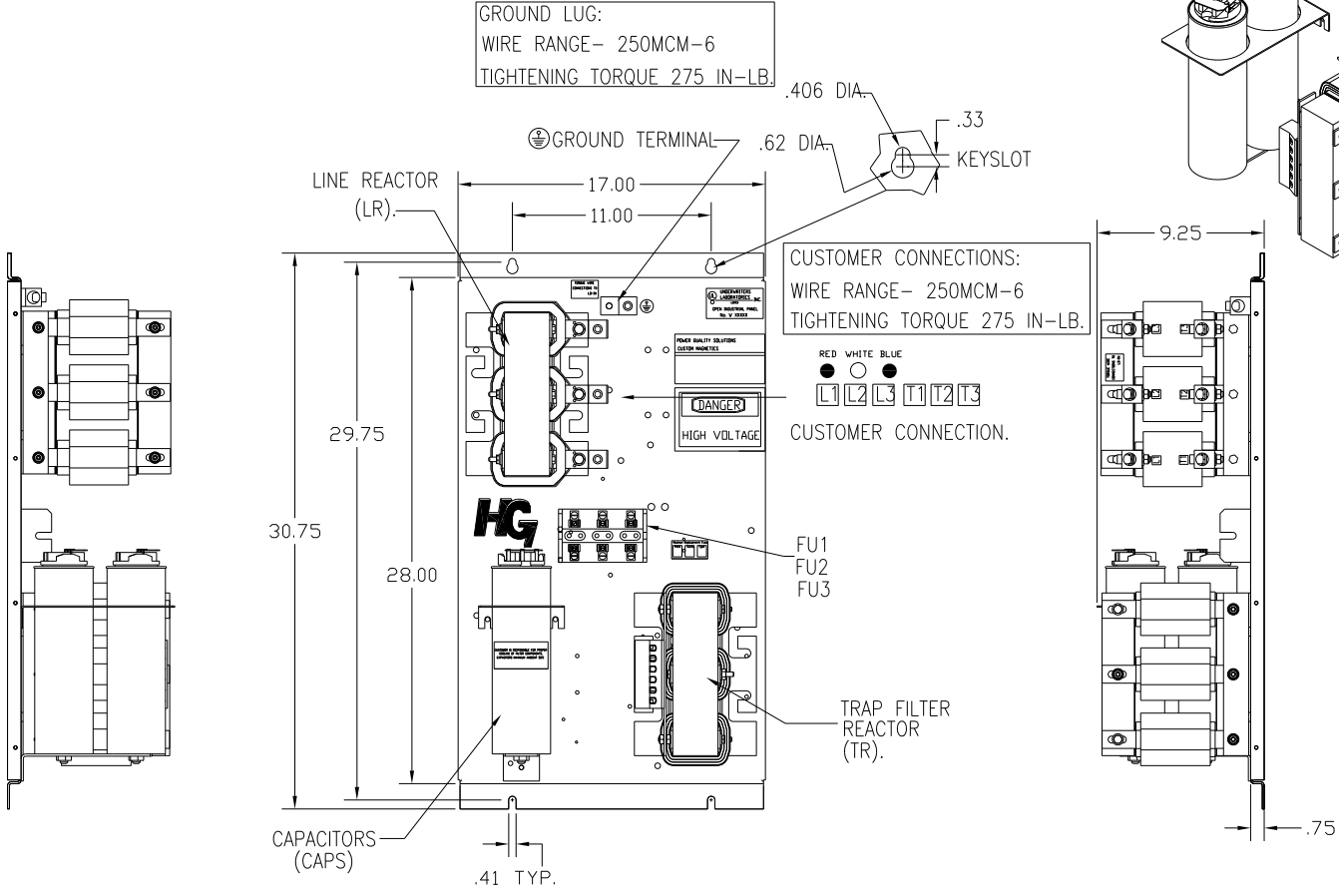


UNIT SPECIFICATIONS:					
KW	HARMONIC	VOLT	HZ	PHASE	FLA
55	5TH	400	50	3	105
ENCLOSURE		WHITE OPEN PANEL			
APPROX.WT. LBS.		138			



SYMBOL	TCI PART NUMBER
LR	KDRG34T
TR	KTR22L55HG
CAP1, 2 (20 KVAR)	KCAP20A6B
Fu1, 2, 3	11006



CUSTOMER IS RESPONSIBLE FOR PROPER COOLING OF FILTER COMPONENTS. CAPACITORS MAXIMUM AMBIENT 50°C.

CUSTOMER IS RESPONSIBLE FOR INSTALLATION TO MEET ALL NATIONAL AND LOCAL ELECTRICAL CODES.

SEE DRAWING# 27709 FOR SCHEMATIC

		TOLERANCES (EXCEPT AS NOTED)		TCI 7878 N. 86th STREET MILWAUKEE, WI 53224	
		DECIMAL		HG55LW00ST, 55KW 400/3/50, OPEN.	
		XX ± .03		DRN. BY DSW DATE 11/16/2010 DWG. NO. 104501DG	
		XXX ± .01		SCALE TO FIT	
		FRACTIONAL ± 1/32		APRVD	
A AS BUILT		11/04/10	DSW	C 104501DG	
NO REVISION		DATE	BY	SHT. 1 OF 1	
		ANGULAR ± 1/2°			