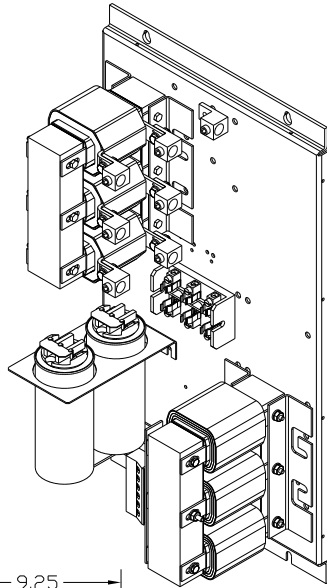
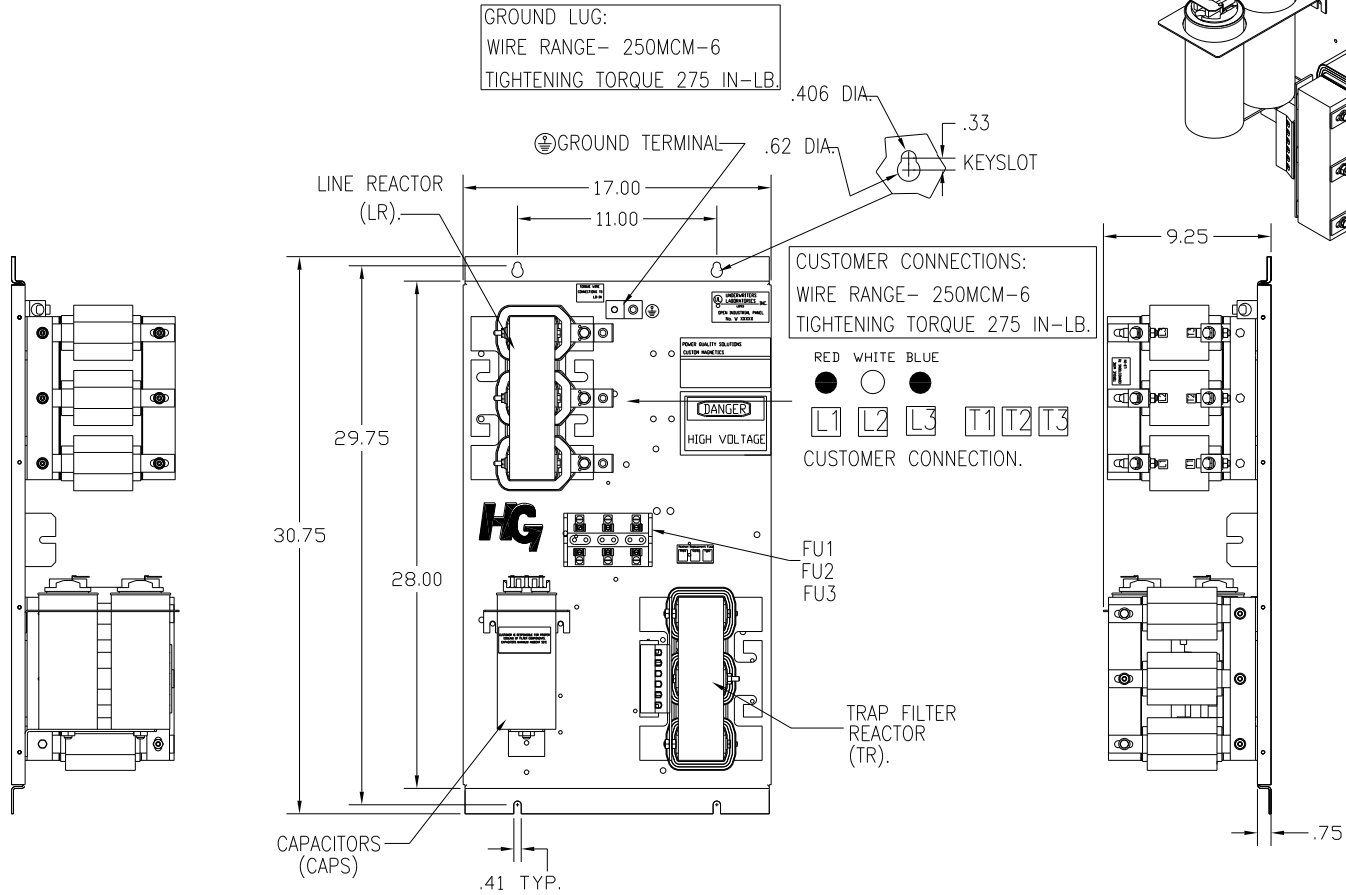


| UNIT SPECIFICATIONS: |          |                  |    |       |     |
|----------------------|----------|------------------|----|-------|-----|
| KW                   | HARMONIC | VOLT             | HZ | PHASE | FLA |
| 45                   | 5TH      | 400              | 50 | 3     | 90  |
| ENCLOSURE            |          | WHITE OPEN PANEL |    |       |     |
| APPROX.WT. LBS.      |          | 136              |    |       |     |



| SYMBOL          | TCI PART NUMBER |
|-----------------|-----------------|
| LR              | KDRG33T         |
| TR              | KTR18L55HG      |
| CAP1. (15 KVAR) | KCAP15A6B       |
| CAP2. (15 KVAR) | KCAP15A6B       |
| Fu1, 2, 3       | 22926           |



CUSTOMER IS RESPONSIBLE FOR PROPER COOLING OF FILTER COMPONENTS. CAPACITORS MAXIMUM AMBIENT 50°C.

CUSTOMER IS RESPONSIBLE FOR INSTALLATION TO MEET ALL NATIONAL AND LOCAL ELECTRICAL CODES.

SEE DRAWING# 27709 FOR SCHEMATIC

|             |  |                              |     |   |  |
|-------------|--|------------------------------|-----|---|--|
|             |  | TOLERANCES (EXCEPT AS NOTED) |     | 7878 N. 86th STREET<br>MILWAUKEE, WI 53224    |  |
|             |  | DECIMAL                      |     | HG45LW00ST, 45KW<br>400/3/50, OPEN.           |  |
|             |  | XX ± .03                     |     | DRN. BY DSW DATE 11/16/2010 DWG. NO. 104500DG |  |
|             |  | XXX ± .01                    |     | SCALE TO FIT                                  |  |
|             |  | FRACTIONAL                   |     | APRVD   |  |
|             |  | ± 1/32                       |     | C   |  |
| A AS BUILT  |  | 11/04/10                     | DSW | ± 1/2°  |  |
| NO REVISION |  | DATE                         | BY  |   |  |