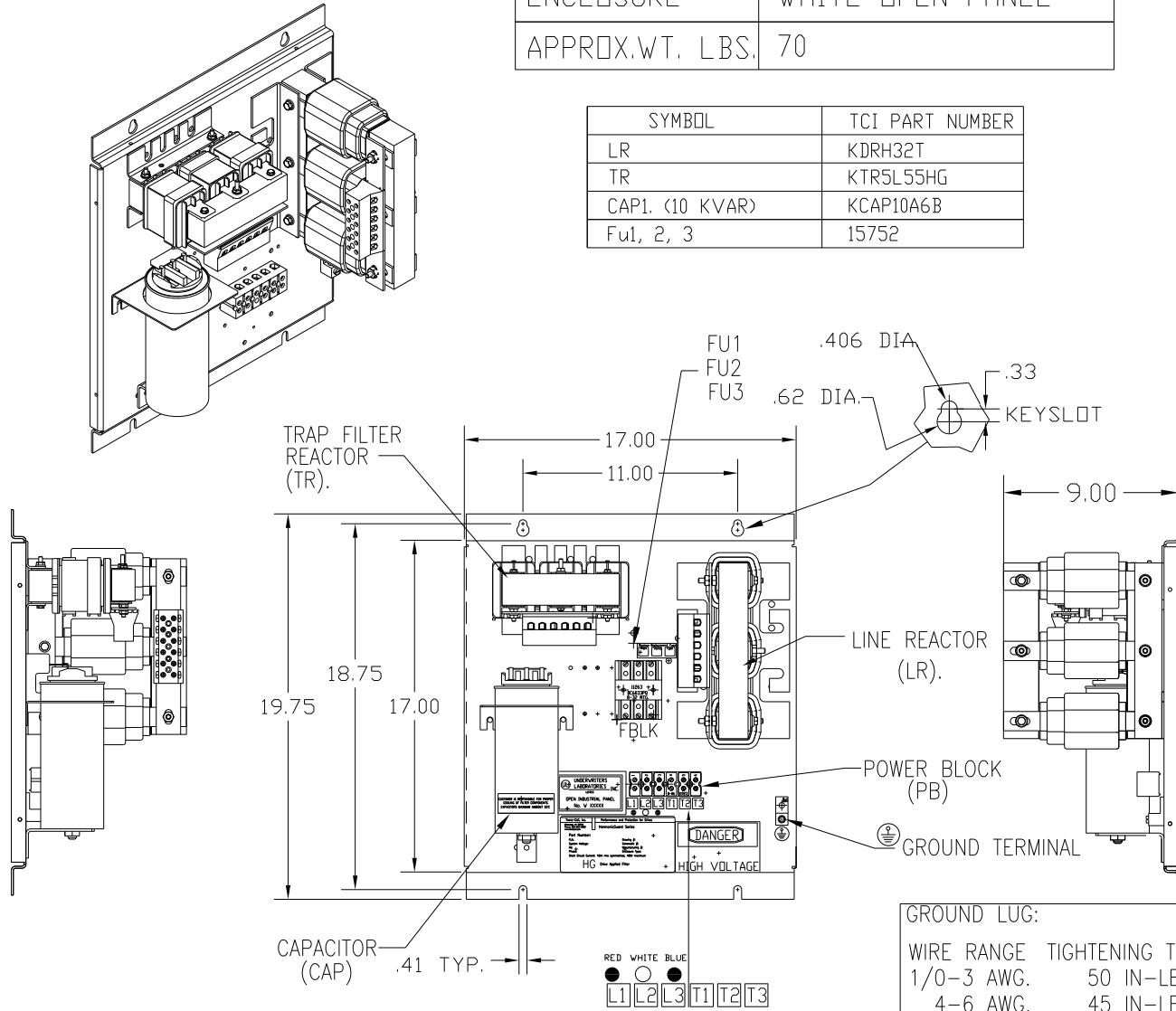


UNIT SPECIFICATIONS:					
KW	HARMONIC	VOLT	HZ	PHASE	FLA
15	5TH	400	50	3	32
ENCLOSURE		WHITE OPEN PANEL			
APPROX.WT. LBS.		70			

SYMBOL	TCI PART NUMBER
LR	KDRH32T
TR	KTR5L55HG
CAP1. (10 KVAR)	KCAP10A6B
Fu1, 2, 3	15752



PB-POWER INPUT BLOCK:
WIRE RANGE-#18 TO #4 AWG.
TIGHTENING TORQUE 20 IN-LB.

GROUND LUG:

WIRE RANGE	TIGHTENING TORQUE
1/0-3 AWG.	50 IN-LBS
4-6 AWG.	45 IN-LBS
8 AWG.	40 IN-LBS
10-14 AWG.	35 IN-LBS

CUSTOMER IS RESPONSIBLE FOR PROPER COOLING OF FILTER COMPONENTS. CAPACITORS MAXIMUM AMBIENT 50°C.

CUSTOMER IS RESPONSIBLE FOR INSTALLATION TO MEET ALL NATIONAL AND LOCAL ELECTRICAL CODES.

SEE DRAWING# 27709 FOR SCHEMATIC

TOLERANCES (EXCEPT AS NOTED)				TCI 7878 N. 86th STREET MILWAUKEE, WI 53224	
			DECIMAL	HG15LW00ST, 15KW	
			XX ± .03	400/3/50, OPEN	
			XXX ± .01		
			FRACTIONAL		
			± 1/32		
A	AS BUILT	11/04/10	DSW	DRN. BY DSW	DATE 11/15/2010
NO	REVISION	DATE	BY	SCALE TO FIT	APRVD
			ANGULAR ± 1/2°	DWG. NO. 104497DG	
				SHT. 1 OF 1	