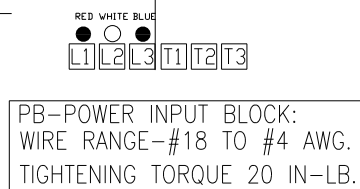
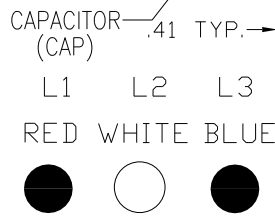
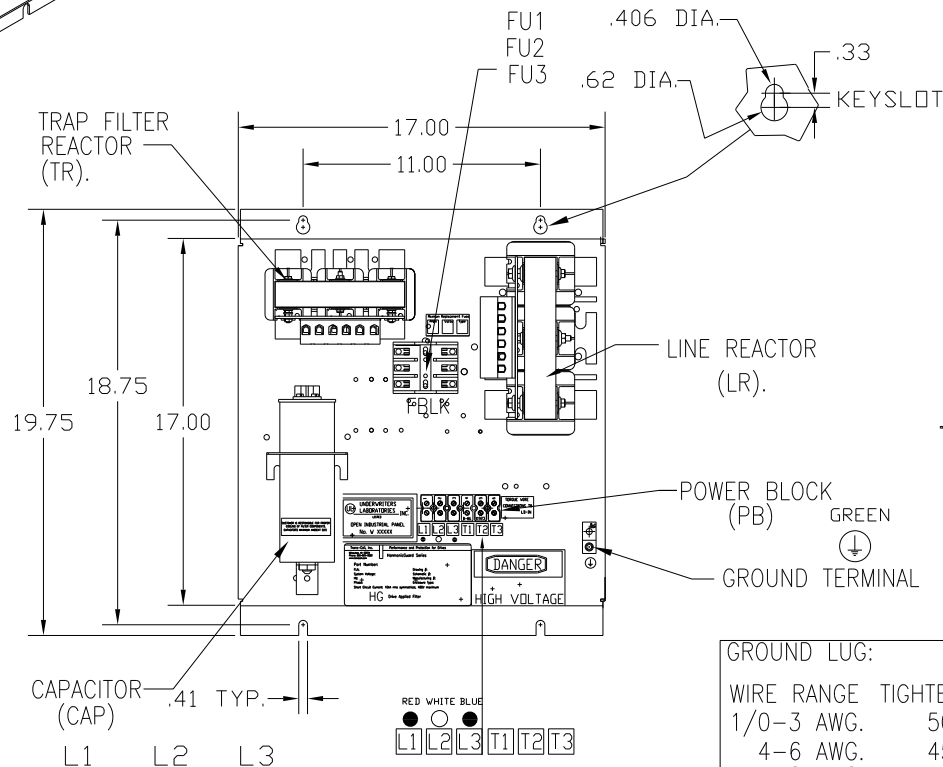
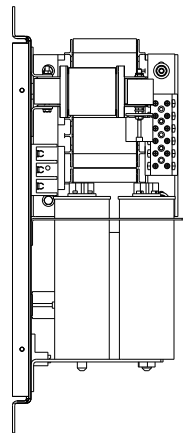
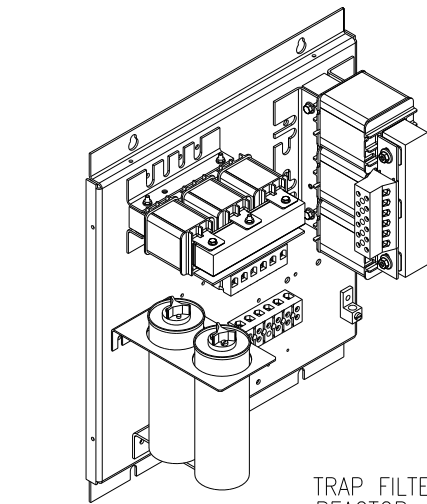


UNIT SPECIFICATIONS:

KW	HARMONIC	VOLT	HZ	PHASE	FLA
11	5TH	400	50	3	24
ENCLOSURE		WHITE OPEN PANEL			
APPROX.WT. LBS.		53			

SYMBOL	TCI PART NUMBER
LR	KDRF31T
TR	KTR4L55HG
CAP, 1.. (3 KVAR)	KCAP3A6A
CAP, 2.. (5 KVAR)	KCAP5A6A
Fu1, 2, 3	22924



GROUND LUG:

WIRE RANGE	TIGHTENING TORQUE.
1/0-3 AWG.	50 IN-LBS
4-6 AWG.	45 IN-LBS
8 AWG.	40 IN-LBS
10-14 AWG.	35 IN-LBS

CUSTOMER IS RESPONSIBLE FOR PROPER COOLING OF FILTER COMPONENTS. CAPACITORS MAXIMUM AMBIENT 50°C.

CUSTOMER IS RESPONSIBLE FOR INSTALLATION TO MEET ALL NATIONAL AND LOCAL ELECTRICAL CODES.

SEE DWG# 27709 FOR SCHEMATIC

TOLERANCES (EXCEPT AS NOTED)				TCI 7878 N. 86th STREET MILWAUKEE, WI 53224	
			DECIMAL	HG11LW00ST, 11KW 400/3/50, OPEN	
			XX ± .03		
			XXX ± .01		
			FRACTIONAL ± 1/32		
A	AS BUILT	5/10/11	DSW	DRN. BY DSW	DATE 05/11/2011
NO	REVISION	DATE	BY	SCALE TO FIT	APRVD
			ANGULAR ± 1/2°	DWG. NO. 104662DG	
					SHT. 1 OF 1