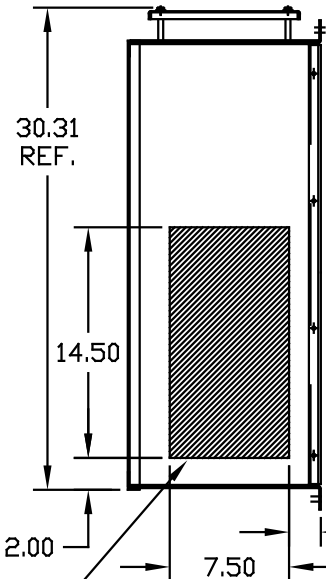
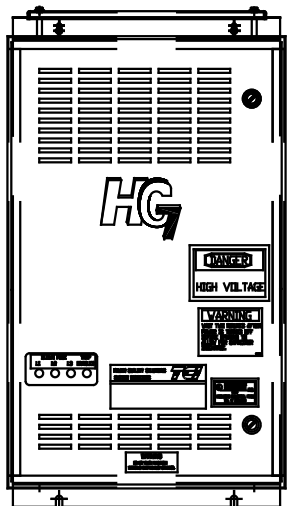
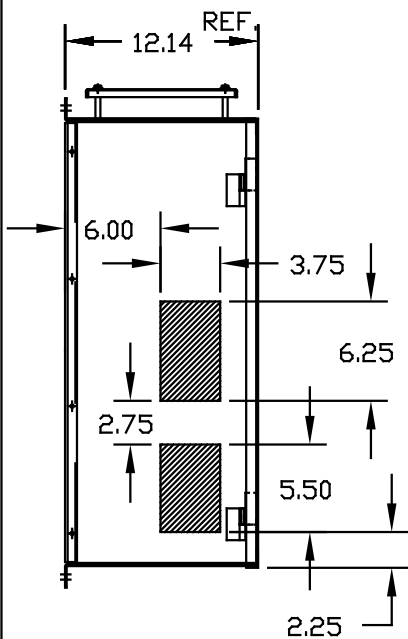
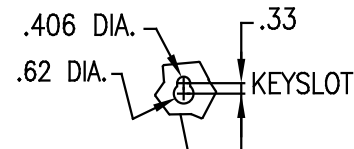
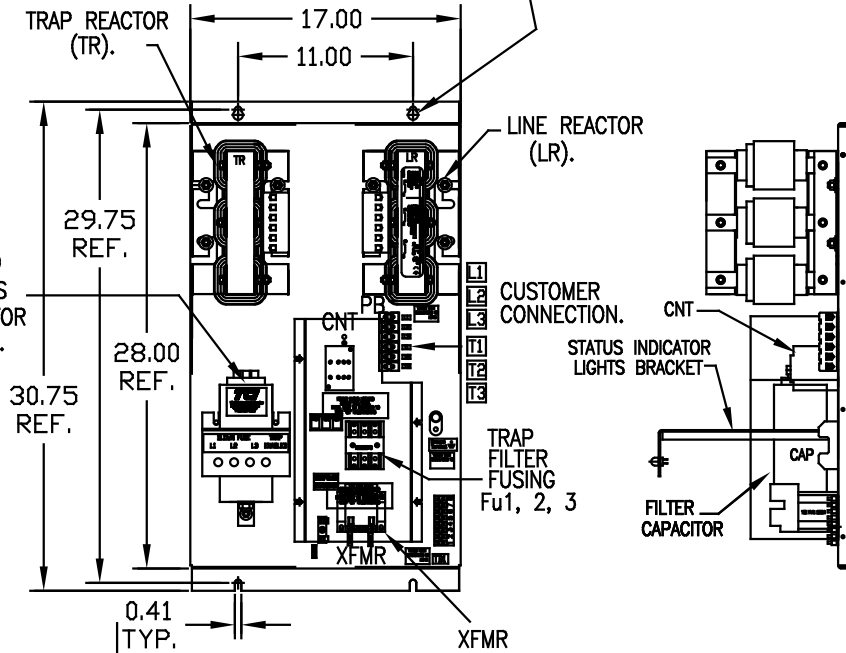


UNIT SPECIFICATIONS:						
KVAR	HARMONIC	VOLT	HZ	PHASE	HP	
15	5TH	480	60	3	40	
ENCLOSURE		NEMA 1 - BLACK COLOR				
OPTIONS		W/INDICATOR LIGHTS				
APPRX.WT. LBS.		180				

SYMBOL	TCI PART NUMBER
LR	KDR11T
TR	KTR15A65HG
CAP	16449
XFMR.	23891
Fu1, 2, 3	11307
Fu4,6	21270
Fu5	13364
CNT	23021



RB BLEED RESISTORS ON CAPACITOR TERMINALS.



HATCHED AREAS ARE SUGGESTED CUSTOMER WIRE AND EXIT LOCATIONS

ENCLOSURE NOT SHOWN

SEE 25334-1 FOR WIRING CONNECTIONS
SEE 25334 FOR SCHEMATIC

CUSTOMER IS RESPONSIBLE FOR INSTALLATION TO MEET ALL NATIONAL AND LOCAL ELECTRICAL CODES.

PB-POWER INPUT BLOCK:
WIRE RANGE-#18 TO #4 AWG.
TIGHTENING TORQUE 20 IN-LB.

GROUND LUG:
WIRE RANGE-1/0 TO #14 AWG.
TIGHTENING TORQUE 200 IN-LB.

NO	REVISION	DATE	BY	TOLERANCES EXCEPT AS NOTED:
				DECIMAL
				.XX ±.03
				.XXX±.010
				FRACTIONAL
				± 1/16
				ANGULAR
				± 1/2°



7878 N. 86th STREET
MILWAUKEE, WI 53224

HG40AW01XM, HG7, W/MONITOR
40HP, 480/3/60, TYPE 1

DRN BY DSW DATE 10/11/05
SCALE 1/8"=1" APRVD

DRG NO. B 102856DG
SHT. 1 OF 1