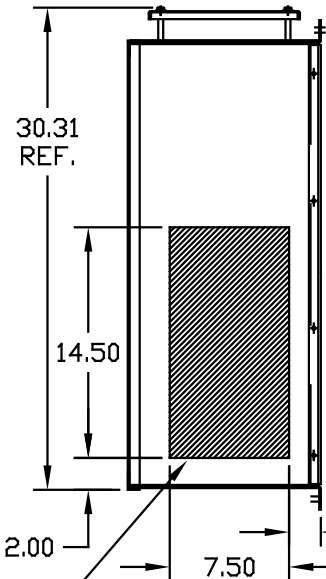
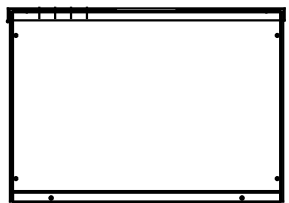
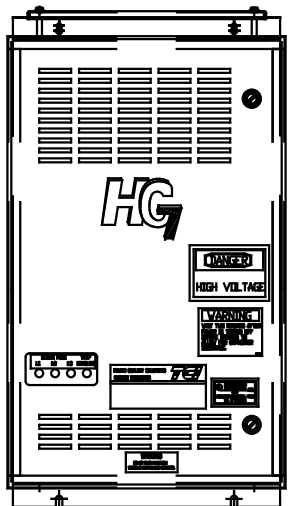
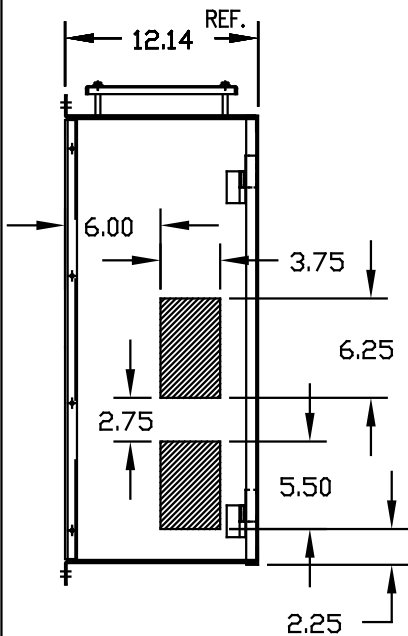
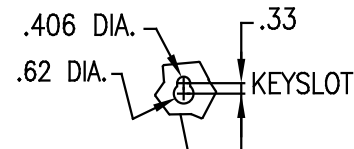
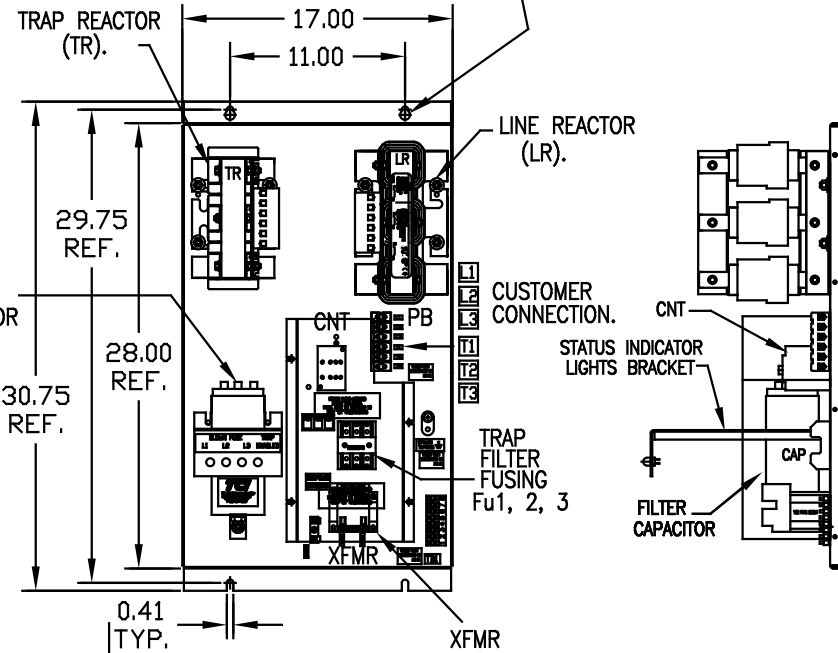


UNIT SPECIFICATIONS:						
KVAR	HARMONIC	VOLT	HZ	PHASE	HP	
10	5TH	480	60	3	30	
ENCLOSURE		NEMA 1 - BLACK COLOR				
OPTIONS		W/INDICATOR LIGHTS				
APPROX.WT. LBS.		140				

SYMBOL	TCI PART NUMBER
LR	KDRHIT
TR	KTR10A65HG
CAP	KCAP10A6B
XFMR.	23891
Fu1, 2, 3	11307
Fu4,6	21270
Fu5	13364
CNT	12434



RB BLEED RESISTORS ON CAPACITOR TERMINALS.



HATCHED AREAS ARE SUGGESTED CUSTOMER WIRE AND EXIT LOCATIONS

ENCLOSURE NOT SHOWN

SEE 25334-1 FOR WIRING CONNECTIONS
SEE 25334 FOR SCHEMATIC

CUSTOMER IS RESPONSIBLE FOR INSTALLATION TO MEET ALL NATIONAL AND LOCAL ELECTRICAL CODES.

PB-POWER INPUT BLOCK:
WIRE RANGE-#18 TO #4 AWG.
TIGHTENING TORQUE 20 IN.-LB.

GROUND LUG:
WIRE RANGE-1/0 TO #14 AWG.
TIGHTENING TORQUE 200 IN.-LB.

TOLERANCES EXCEPT AS NOTED:			
			DECIMAL
			.XX ±.03
			.XXX±.010
			FRACTIONAL ± 1/16
			ANGULAR ± 1/2°
△	2516, CAP WAS 16448	9/30/07	RJC
NO	REVISION	DATE	BY



7878 N. 86th STREET
MILWAUKEE, WI 53224

HG30AW01XM, HG7, W/MONITOR
30HP, 480/3/60, TYPE 1

DRN BY	DSW	DATE	10/07/05	DRG NO.	102855DG
SCALE	1/8"=1"	APPR'D.	B		SHT. 1 OF 1