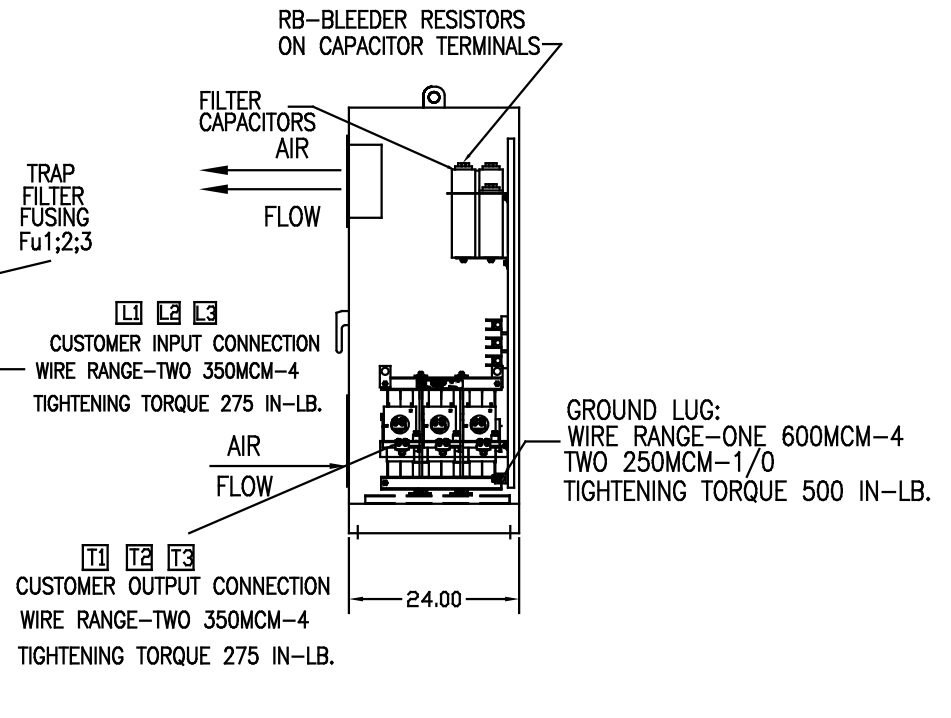
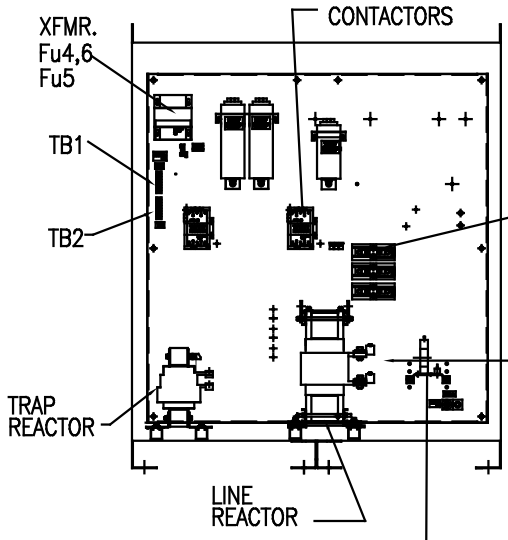
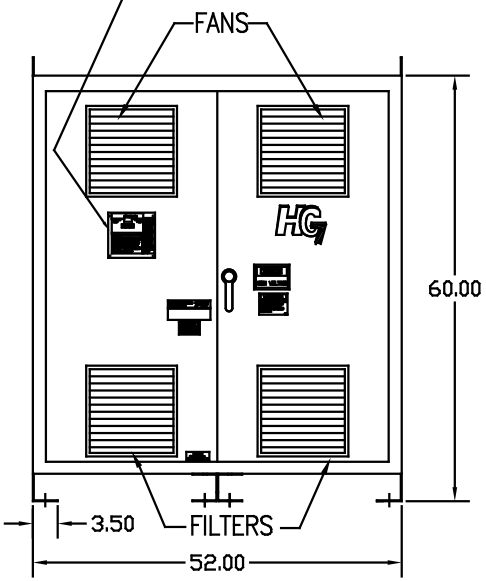
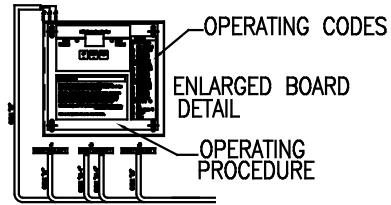


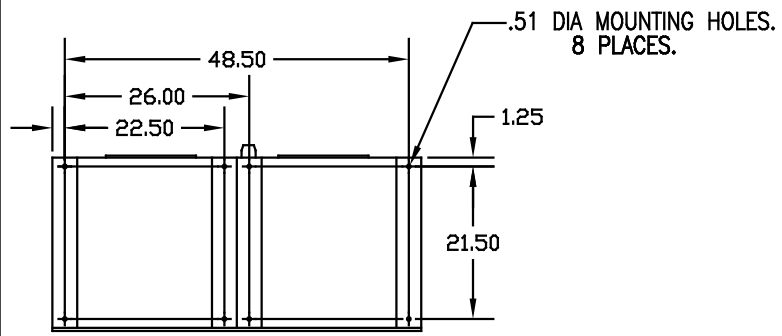
UNIT SPECIFICATIONS:					
KVAR	HARMONIC	VOLT	HZ	PHASE	HP
90	5TH	480	60	3	300
ENCLOSURE		NEMA 1 - COLOR, BLACK			
APPROX.WT. LBS.		825			

SYMBOL	TCI PART NUMBER
LR	KDRX1T
TR	KTR90A65HGX1
CAP1 ,2 ,3 ,4. (20 KVAR)	KCAP20A6B
CAP5. (10 KVAR)	KCAP10A6B
CONTACTORS	19246
XFMR.	23899
Fu1a,2a,3a	11175
Fu4,6	14806
Fu5	23977



L1 L2 L3
CUSTOMER INPUT CONNECTION
WIRE RANGE-TWO 350MCM-4
TIGHTENING TORQUE 275 IN.-LB.
AIR FLOW
T1 T2 T3
CUSTOMER OUTPUT CONNECTION
WIRE RANGE-TWO 350MCM-4
TIGHTENING TORQUE 275 IN.-LB.

CURRENT SENSING TRANSFORMERS



FOR SCHEMATIC SEE DRAWING 25334-4
FOR WIRING SEE DRAWING 25334-5

CUSTOMER IS RESPONSIBLE FOR INSTALLATION TO MEET ALL NATIONAL AND LOCAL ELECTRICAL CODES

				TOLERANCES EXCEPT AS NOTED	TCI 7878 N. 86th STREET MILWAUKEE, WI 53224
				DECIMAL .XX ±.03 .XXX ±.01	
				FRACTIONAL ± 1/32	HG300AW01XM, HG7 MONITOR 300HP, 480/3/60, TYPE 1
2516, CAP WAS 23123				ANGULAR ± 1/2°	
CAP WAS 16448		9/30/07	RJC	DATE	12/19/05
NO	REVISION	DATE	BY	SCALE	TO FIT
					ING. NO. 102865DG SHT. 1 OF 1