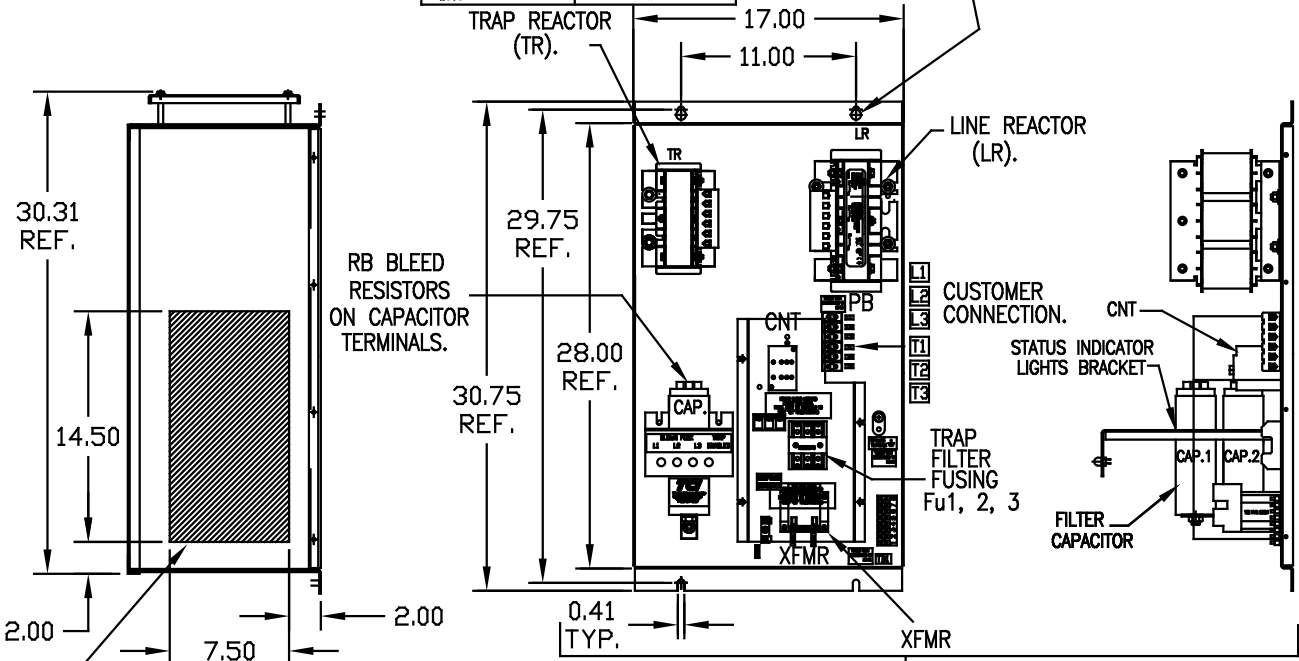
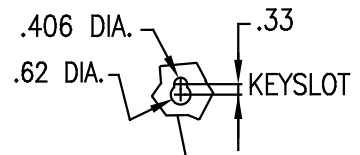


UNIT SPECIFICATIONS:					
KVAR	HARMONIC	VOLT	HZ	PHASE	HP
8	5TH	480	60	3	25
ENCLOSURE		NEMA 1 - BLACK COLOR			
		W/INDICATOR LIGHTS			
OPTIONS					
APPRX.WT. LBS. 125					

SYMBOL	TCI PART NUMBER
LR	KDRF3T
TR	KTR8A65HG
CAP1	KCAP3A6A
CAP2	KCAP5A6A
XFMR.	23891
Fu1, 2, 3	11306
Fu4,6	21270
Fu5	13364
CNT	12434



HATCHED AREAS ARE SUGGESTED CUSTOMER WIRE AND EXIT LOCATIONS

ENCLOSURE NOT SHOWN
 SEE 25334-1 FOR WIRING CONNECTIONS
 SEE 25334 FOR SCHEMATIC
 CUSTOMER IS RESPONSIBLE FOR INSTALLATION TO MEET ALL NATIONAL AND LOCAL ELECTRICAL CODES.

PB-POWER INPUT BLOCK:
 WIRE RANGE-#18 TO #4 AWG.
 TIGHTENING TORQUE 20 IN.-LB.

GROUND LUG:
 WIRE RANGE-1/0 TO #14 AWG.
 TIGHTENING TORQUE 200 IN.-LB.

TOLERANCES EXCEPT AS NOTED:			
			DECIMAL
			.XX ±.03
			.XXX±.010
			FRACTIONAL ± 1/16
			ANGULAR ± 1/2°
△	2516,CAP WAS 16446&7	9/30/07	RJC
NO	REVISION	DATE	BY

TCI 878 N. 86th STREET MILWAUKEE, WI 53224

HG25AW01XM, HG7,W/MONITOR 25HP, 480/3/60, TYPE 1

DRN BY DSW DATE 10/07/05 DVG. NO. B 102854DG

SCALE 1/8"=1" APRVD. SHT. 1 OF 1