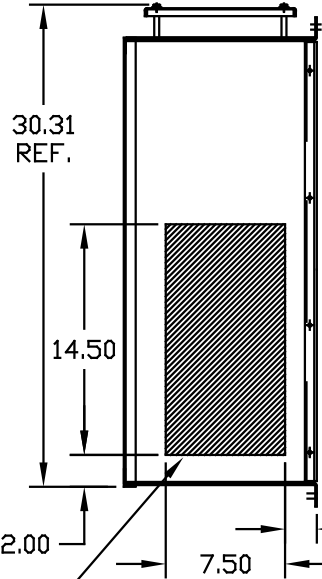
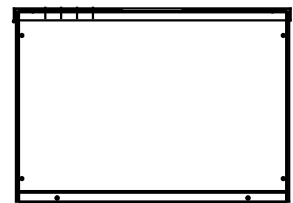
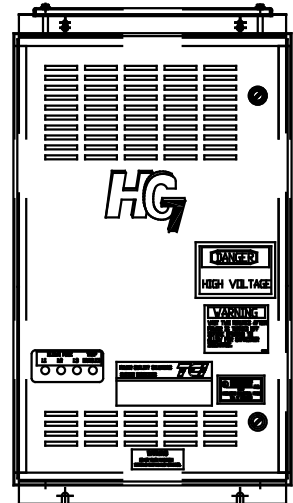
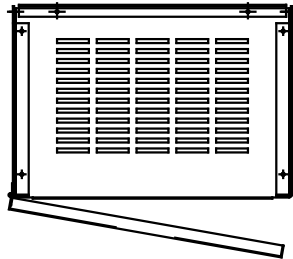
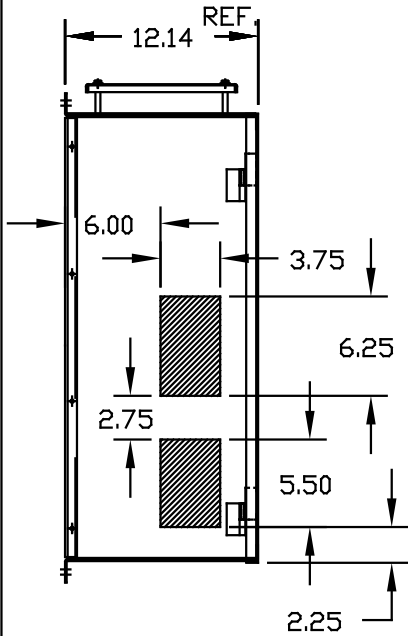
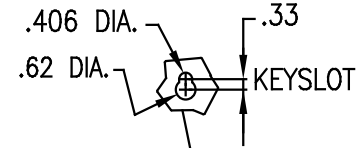
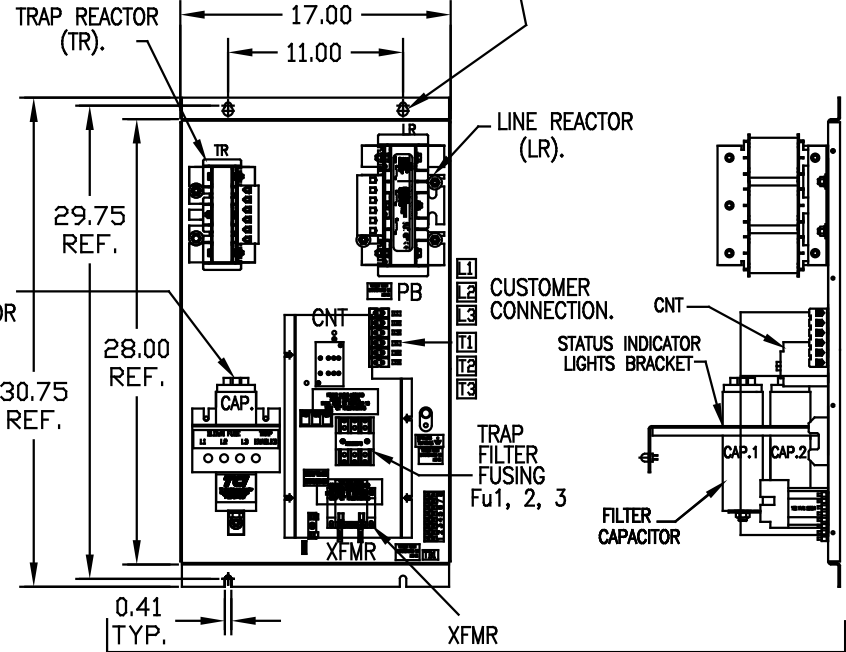


UNIT SPECIFICATIONS:					
KVAR	HARMONIC	VOLT	HZ	PHASE	HP
6	5TH	480	60	3	20
ENCLOSURE		NEMA 1 - BLACK COLOR			
OPTIONS		W/INDICATOR LIGHTS			
APPRX.WT. LBS.		120			

SYMBOL	TCI PART NUMBER
LR	KDRF2T
TR	KTR6A65HG
CAP1, CAP2	KCAP3A6A
XFMR.	23891
Fu1, 2, 3	15752
Fu4,6	21270
Fu5	13364
CNT	12434



RB BLEED RESISTORS ON CAPACITOR TERMINALS.



HATCHED AREAS ARE SUGGESTED CUSTOMER WIRE AND EXIT LOCATIONS

ENCLOSURE NOT SHOWN

SEE 25334-1 FOR WIRING CONNECTIONS
SEE 25334 FOR SCHEMATIC

CUSTOMER IS RESPONSIBLE FOR INSTALLATION TO MEET ALL NATIONAL AND LOCAL ELECTRICAL CODES.

PB-POWER INPUT BLOCK:
WIRE RANGE-#18 TO #4 AWG.
TIGHTENING TORQUE 20 IN.-LB.

GROUND LUG:
WIRE RANGE-1/0 TO #14 AWG.
TIGHTENING TORQUE 200 IN.-LB.

TOLERANCES EXCEPT AS NOTED:			
			DECIMAL
			.XX ±.03
			.XXX±.010
			FRACTIONAL ± 1/16
			ANGULAR ± 1/2°
△	2516, CAP WAS 16446	9/30/07	RJC
NO	REVISION	DATE	BY



878 N. 86th STREET
MILWAUKEE, WI 53224

HG20AW01XM, HG7, W/MONITOR
20HP, 480/3/60, TYPE1

DRN BY DSW DATE 10/07/05
SCALE 1/8"=1"

APPRV B 102853DG
SHT.1 OF 1