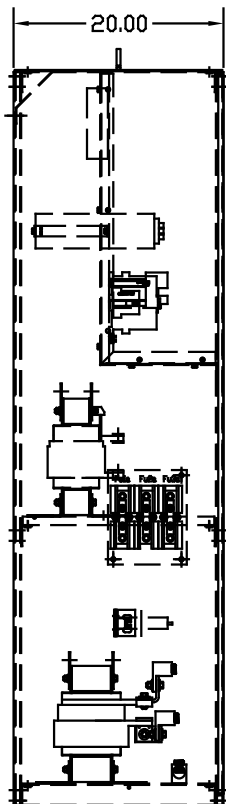
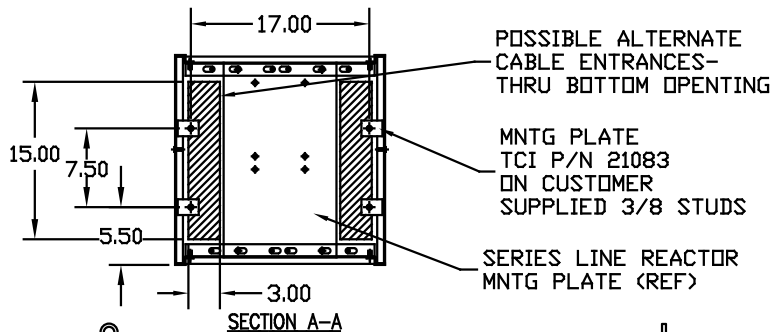
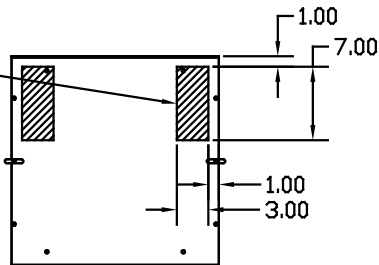
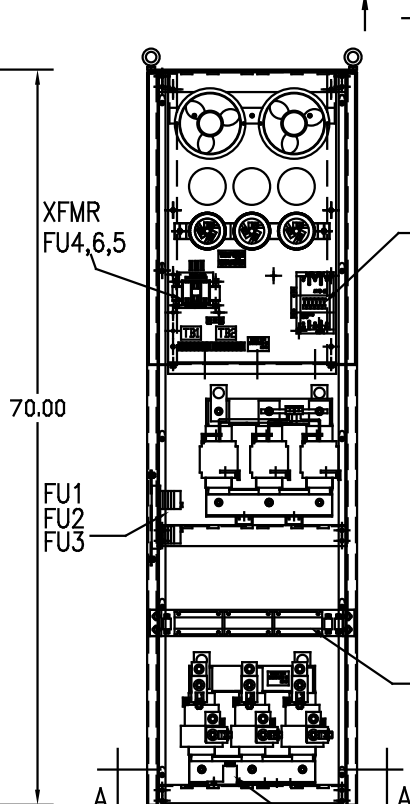
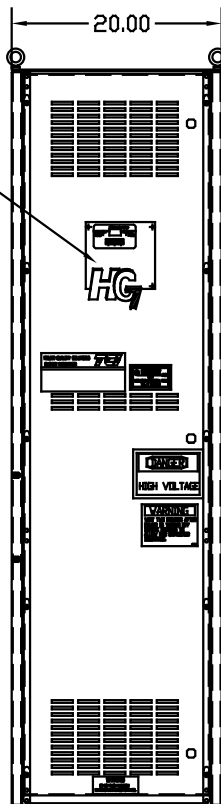


POSSIBLE ALTERNATE
CABLE ENTRANCES-
REQUIRES MODIFICATION
OF AIR FLOW DEFLECTOR



HG2 MULTI-
FEATURE
BOARD



CONTACTOR
CNT

CAPACITORS

L1 L2 L3
CUSTOMER CONNECTION INPUT:
WIRE RANGE-ONE 600MCM-4
TWO 250MCM-1/0
TIGHTENING TORQUE 500 IN-LB.

CURRENT
TRANSFORMERS
AND BURDEN
RESISTORS

AIR
FLOW

TRAP
REACTOR
(TR)

SUGGESTED LOCATION
FOR CUSTOMERS INPUT
OPPOSITE SIDE ALSO
AVAILABLE BY MOVING
FUSES AND TR TO
EXISTING MOUNTING
STUDS-CONSULT FACTORY

LINE REACTOR
(LR)

AIR
FLOW

GROUND LUG:
WIRE RANGE-ONE 600MCM-4
TWO 250MCM-1/0
TIGHTENING TORQUE 500 IN-LB.

CUSTOMER CONNECTION OUTPUT:
WIRE RANGE-ONE 600MCM-4
TWO 250MCM-1/0
TIGHTENING TORQUE 500 IN-LB.

16.25
CENTRALIZED

FOR SCHEMATIC SEE 25334-4
FOR WIRING SEE 25334-5

| SYMBOL | TCI PART NUMBER |
|---------------------|-----------------|
| LR | KDRS1TMOD |
| TR | KTR60A65HGX1 |
| CAP.1, CAP2, CAP3 | KCAP20A6B |
| XFMR. | 23894 |
| Fu1,2,3 | 11305 |
| Fu4,6 | 13203 |
| Fu5 | 13362 |
| CNT | 19246 |
| HG2 (MULTI-FEATURE) | 20830 |

T1 T2 T3

CUSTOMER IS RESPONSIBLE FOR INSTALLATION
TO MEET ALL NATIONAL AND LOCAL ELECTRICAL CODES.

| UNIT SPECIFICATIONS: | | | | TOLERANCES EXCEPT AS NOTED | | 7878 N. 86th STREET MILWAUKEE, WI 53224 |
|----------------------|----------|----------------------|----|-------------------------------|-----|---|
| KVAR | HARMONIC | VOLT | HZ | PHASE | HP | |
| 60 | 5TH | 480 | 60 | 3 | 200 | HG200AW01XM, HG7, 200HP 480/3/60, MONITOR PACKAGE |
| ENCLOSURE | | NEMA 1- COLOR, BLACK | | | | |
| FEATURES | | MULTI-FEATURE BOARD | | | | |
| APPROX.WT. LBS. | | 500 | | | | REV. BY: DSW DATE: 10/24/05 DWG. NO.: 102863DG SCALE: TO FIT |
| REVISION | | DATE | | BY | | SHEET: 1 OF 1 |