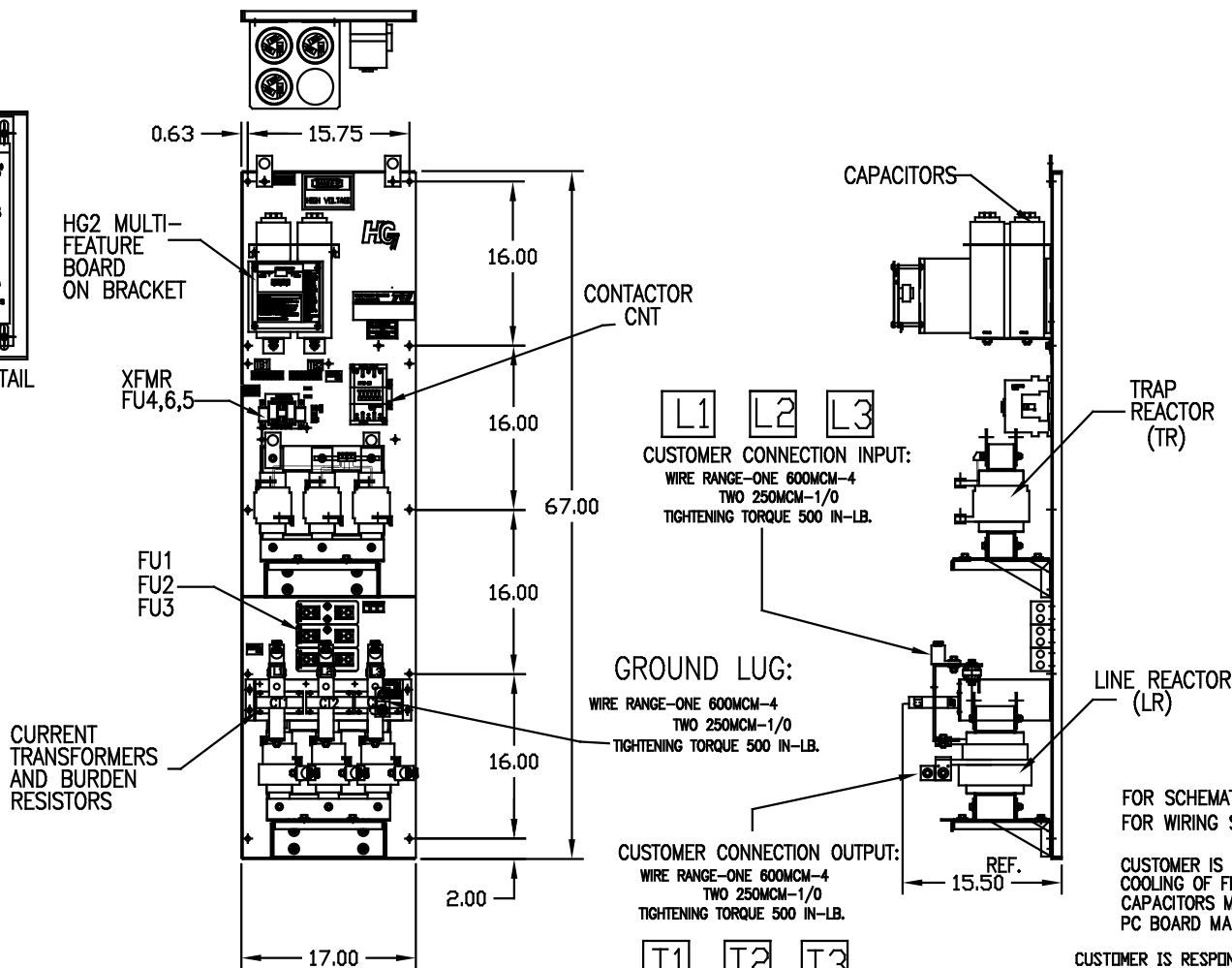


ENLARGED BOARD DETAIL



FOR SCHEMATIC SEE DRAWING 25334-4
FOR WIRING SEE DRAWING 25334-5

CUSTOMER IS RESPONSIBLE FOR PROPER COOLING OF FILTER COMPONENTS. CAPACITORS MAXIMUM AMBIENT 50°C PC BOARD MAX. AMBIENT 40°C.

CUSTOMER IS RESPONSIBLE FOR INSTALLATION TO MEET ALL NATIONAL AND LOCAL ELECTRICAL CODES.

SYMBOL	TCI PART NUMBER
LR	KDRS1TMD0
TR	KTR60A65HGX1
CAP.1, CAP2, CAP3	KCAP20A6B
XFMR.	23894
Fu1,2,3	11305
Fu4,6	13203
Fu5	13362
CNT	19246
HG2 (MULTI-FEATURE)	20830

				TOLERANCES EXCEPT AS NOTED
				DECIMAL
				.XX ± .03
				.XXX ± .01
				FRACTIONAL ± 1/32
				ANGULAR ± 1/2°
△	2516,CAPS WERE	23123	12/20/07	RJC
NO	REVISION		DATE	BY

TCI 7878 N. 86th STREET
MILWAUKEE, WI 53224

HG200AW00XM, HG7 STANDARD
200 HP, 480/3/60, OPEN

DRN BY	DSW	DATE	09/07/05	DWG. NO.	102752DG
SCALE	TO FIT	APPRV.		B	SHT. 1 of 1

UNIT SPECIFICATIONS:					
KVAR	HARMONIC	VOLT	HZ	PHASE	HP
60	5TH	480	60	3	200
ENCLOSURE	WHITE OPEN PANEL				
FEATURES	MULTI-FEATURE BOARD				
APPROX.WT. LBS.	298				