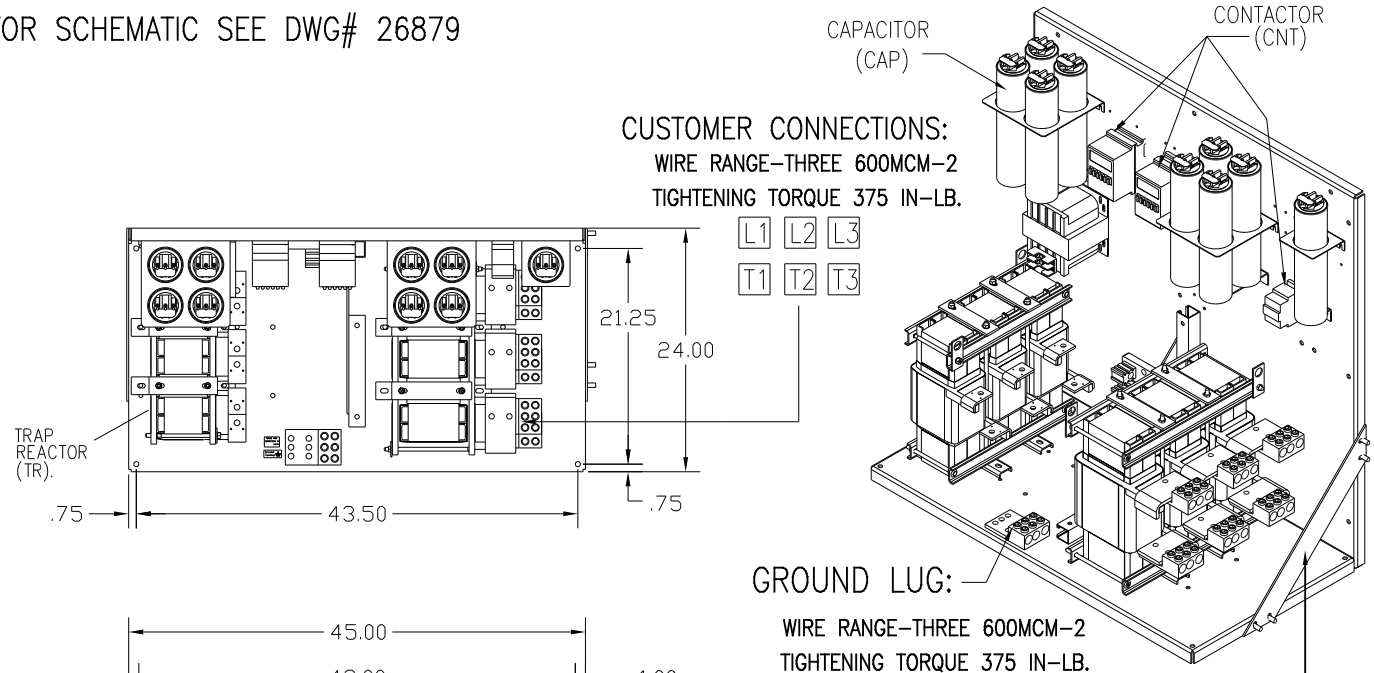
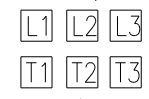


FOR SCHEMATIC SEE DWG# 26879



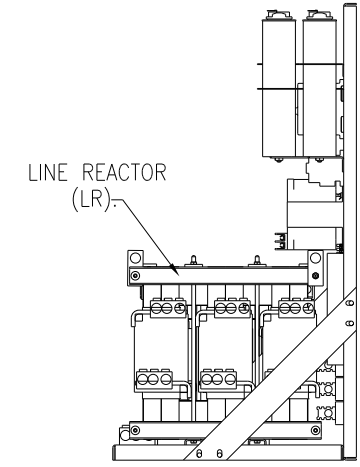
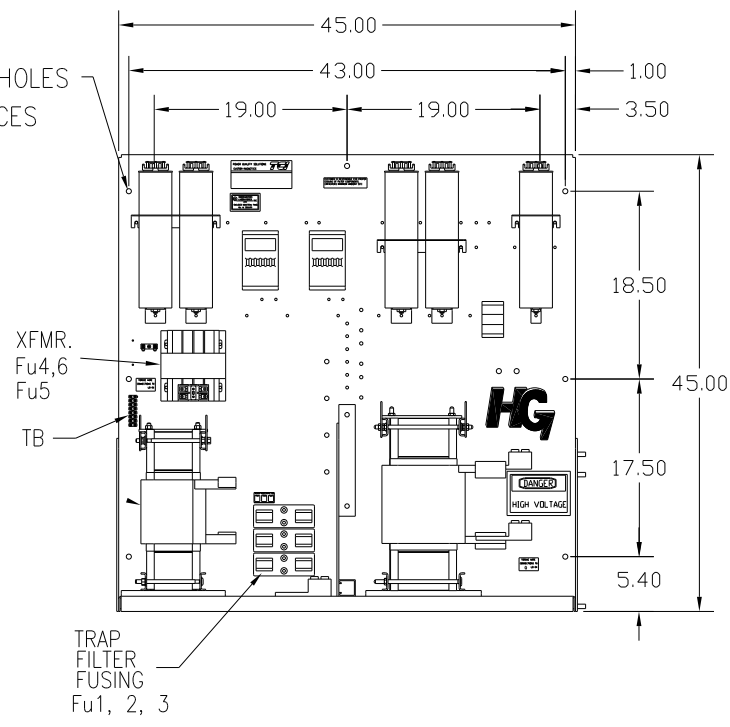
CUSTOMER CONNECTIONS:
 WIRE RANGE—THREE 600MCM-2
 TIGHTENING TORQUE 375 IN-LB.



GROUND LUG:
 WIRE RANGE—THREE 600MCM-2
 TIGHTENING TORQUE 375 IN-LB.

NOTE: SUPPORT BRACE IS REMOVABLE
 TO ALLOW ROOM FOR CUSTOMER ENTRY.

.50 DIA. HOLES
 13 PLACES



UNIT SPECIFICATIONS:	
KVAR HARMONIC	VOLT HZ PHASE HP
180 5TH	600 60 3 600
OPEN	PANEL - COLOR, WHITE
FEATURES	WITH CONTACTOR
APPROX.WT. LBS.	975

SYMBOL	TCI PART NUMBER
LR	KDRY42T
TR	KTR180C65HG
(20 KVAR) 9 PLACES.	KCAP20C6B
Fu1a;2a;3a	13232
Fu4,6	24390
Fu5	23977
XFMR	25292
CNT 2 PLACES.	19246
CNT 1 PLACE.	25315

CUSTOMER IS RESPONSIBLE FOR PROPER
 COOLING OF FILTER COMPONENTS.
 CAPACITORS MAXIMUM AMBIENT 50°C

CUSTOMER IS RESPONSIBLE FOR INSTALLATION
 TO MEET ALL NATIONAL AND LOCAL ELECTRICAL CODES.

NO	REVISION	DATE	BY	TOLERANCES EXCEPT AS NOTED	SCALE	DATE	APPROV	DWG. NO.	REV. NO.
				DECIMAL .XX ±.03 .XXX ±.01	TO FIT	4/29/09		103584DG	
				FRACTIONAL ± 1/32					
				ANGULAR ± 1/2°					

TCI 7878 N. 86th STREET
 MILWAUKEE, WI 53224

HG600CW00STC, HG7, W/CNT
 600HP, 600/3/60 OPEN

SHT.1 OF1