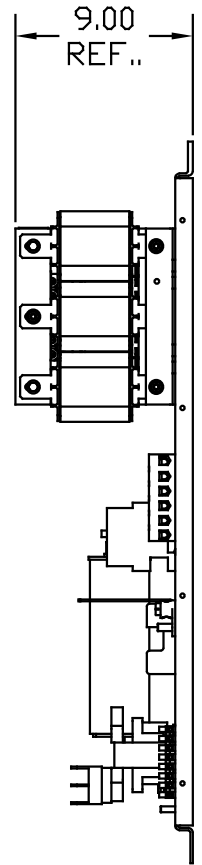
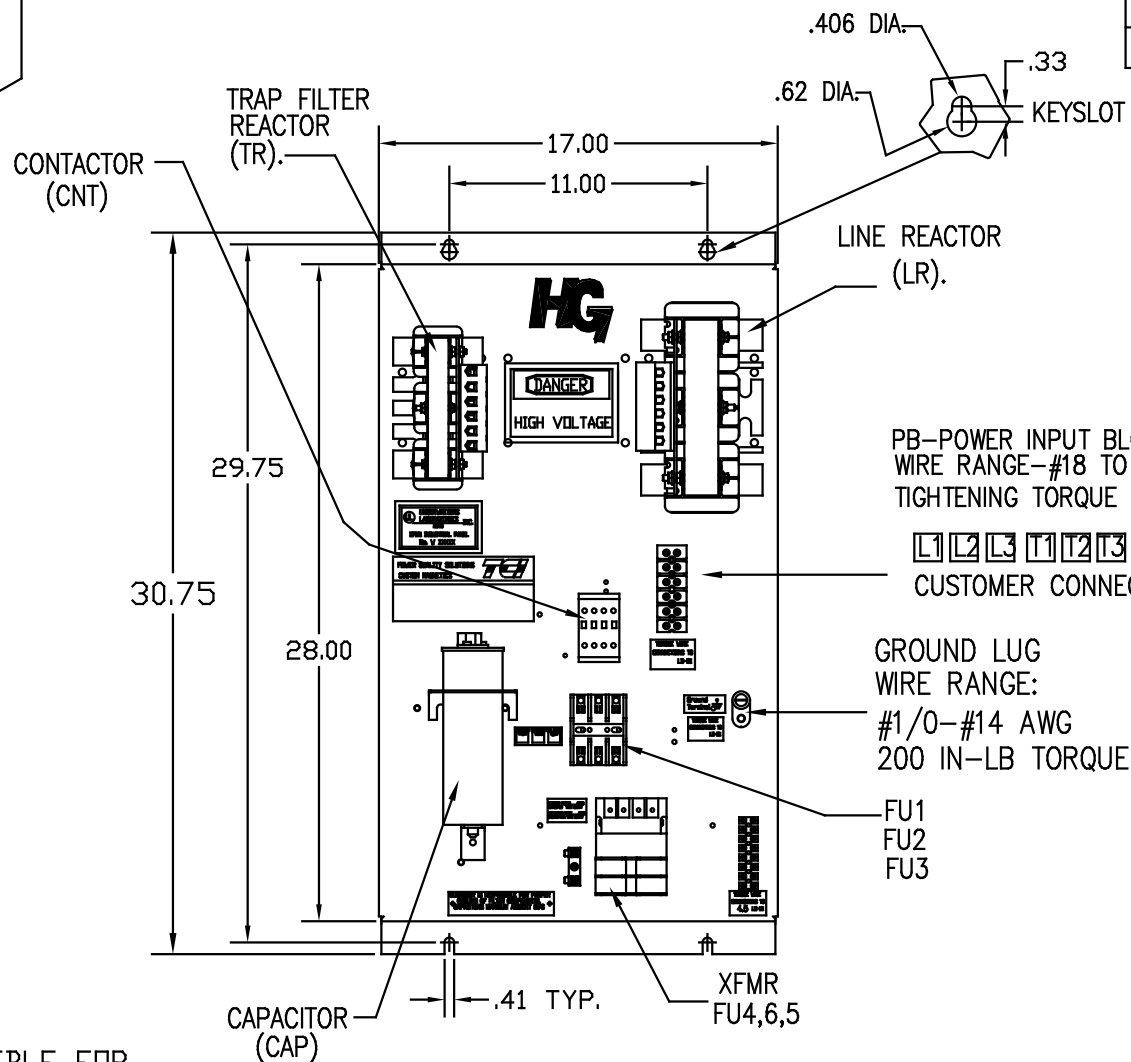
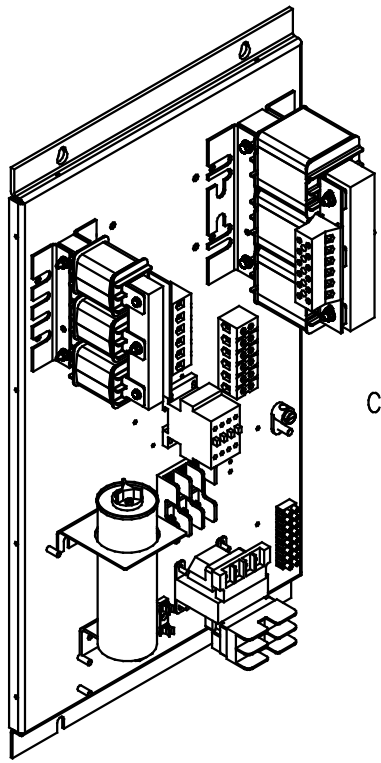


UNIT SPECIFICATIONS:					
KVAR HARMONIC	VOLT	HZ	PHASE	HP	
5	5TH	600	60	3	15
ENCLOSURE		WHITE OPEN PANEL			
OPTIONS		WITH CONTACTOR			
APPROX.WT. LBS.		60			

SYMBOL	TCI PART NUMBER
LR	KDRF41T
TR	KTR5C65HG
CAP	KCAP5C6A
XFMR.	24385
Fu1, 2, 3	11262
Fu4,6	13364
Fu5	24126
CNT	12434



HG

DANGER
HIGH VOLTAGE

PB-POWER INPUT BLOCK:
WIRE RANGE-#18 TO #4 AWG.
TIGHTENING TORQUE 20 IN-LB.

L1 L2 L3 T1 T2 T3

CUSTOMER CONNECTION.

GROUND LUG
WIRE RANGE:
#1/0-#14 AWG
200 IN-LB TORQUE

FU1
FU2
FU3

CUSTOMER IS RESPONSIBLE FOR
PROPER COOLING OF FILTER COMPONENTS.
CAPACITORS MAXIMUM AMBIENT 50°C.

CUSTOMER IS RESPONSIBLE FOR INSTALLATION
TO MEET ALL NATIONAL AND LOCAL ELECTRICAL CODES.

SEE DWG# 26878 FOR SCHEMATIC

				TOLERANCES EXCEPT AS NOTED	7878 N. 86th STREET MILWAUKEE, WI 53224
				DECIMAL	
				XX ±.03 .XXX±.01	
				FRACTIONAL ± 1/32	
				ANGULAR ± 1/2°	HG15CW00STC, 15HP 600/3/60, OPEN, WITH CNT
NO	REVISION	DATE	BY	SCALE	DSW DATE 11/11/08 DWG. NO. 103568DG SCALE TO SCALE