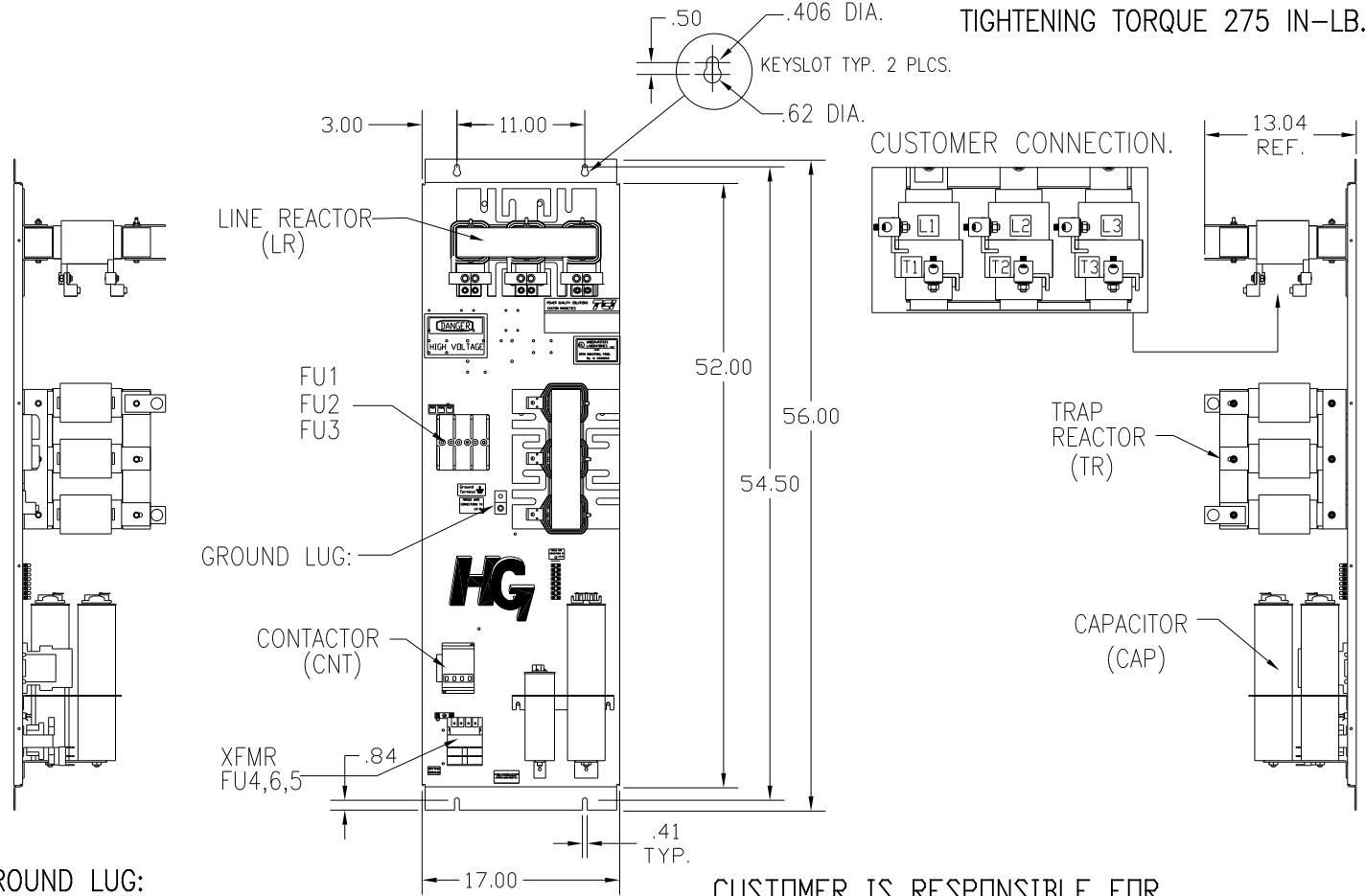


CUSTOMER CONNECTIONS  
 WIRE RANGE- 250MCM-6  
 TIGHTENING TORQUE 275 IN-LB.



GROUND LUG:  
 WIRE RANGE- 250MCM-6  
 TIGHTENING TORQUE 275 IN-LB.

CUSTOMER IS RESPONSIBLE FOR  
 PROPER COOLING OF FILTER COMPONENTS.  
 CAPACITORS MAXIMUM AMBIENT 50°C.

CUSTOMER IS RESPONSIBLE FOR INSTALLATION  
 TO MEET ALL NATIONAL AND LOCAL ELECTRICAL CODES.

SEE DWG# 26879 FOR SCHEMATIC

UNIT SPECIFICATIONS:					
KVAR	HARMONIC	VOLT	HZ	PHASE	HP
45	5TH	600	60	3	150
OPEN PANEL		WHITE			
FEATURES		WITH CONTACTOR			
APPROX.WT. LBS.		265			

SYMBOL	TCI PART NUMBER
LR	KDRL42T
TR	KTR45C65HG
CAP1 5.0 KVAR	KCAP5C6A
CAP2, CAP3. 20 KVAR	KCAP20C6B
Fu1a,2a,3a	15740
Fu4,6	24126
Fu5	13364
CNT	22980

NO	REVISION	DATE	BY	TOLERANCES EXCEPT AS NOTED: DECIMAL XX ±.03 XXX±.01 FRACTIONAL ± 1/32 ANGULAR ± 1/2°	SCALE TO SCALE	DRW. BY DSW	DATE 4/2/09	DRW. NO. 103576DG	7878 N. 86th STREET MILWAUKEE, WI 53224