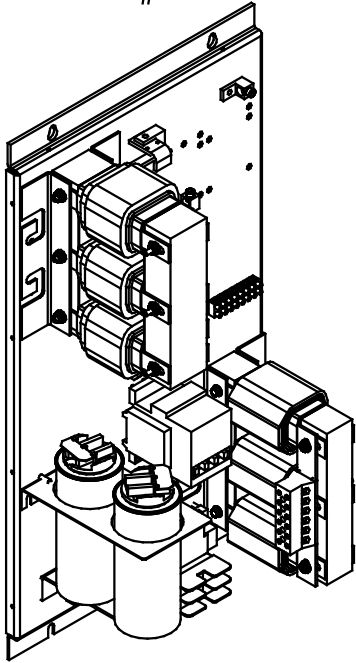
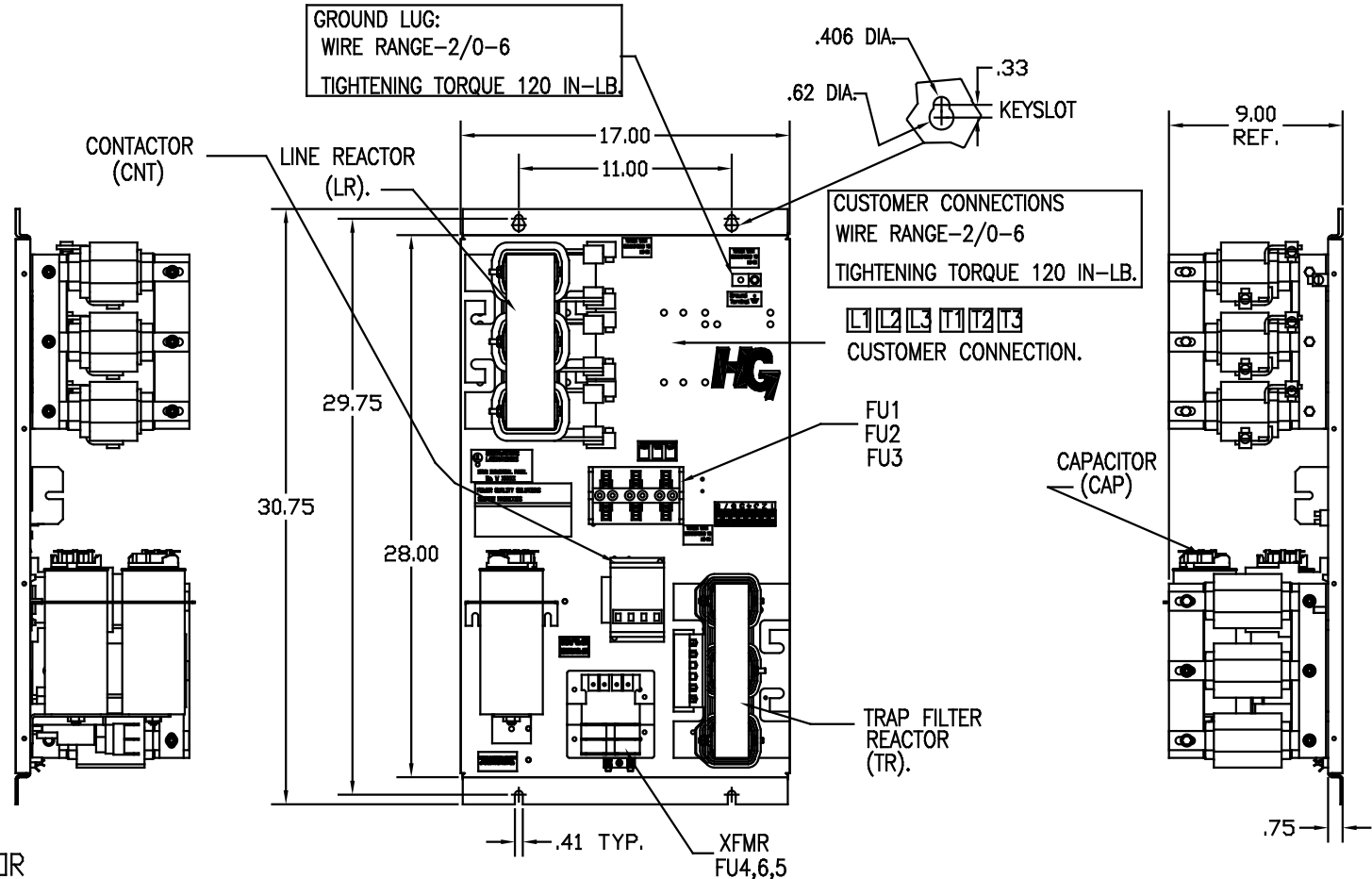


SEE DWG# 26698 FOR SCHEMATIC



| UNIT SPECIFICATIONS: | | | | | |
|----------------------|----------|------------------|----|-------|----|
| KVAR | HARMONIC | VOLT | HZ | PHASE | HP |
| 25 | 5TH | 480 | 60 | 3 | 75 |
| ENCLOSURE | | WHITE OPEN PANEL | | | |
| APPROX.WT. LBS. | | 145 | | | |

| SYMBOL | TCI PART NUMBER |
|-----------------|-----------------|
| LR | KDRG3T |
| TR | KTR25A65HG |
| CAP1. (15 KVAR) | KCAP15A6B |
| CAP2. (10 KVAR) | KCAP10A6B |
| XFMR. | 23891 |
| Fu1, 2, 3 | 11006 |
| Fu4,6 | 21270 |
| Fu5 | 13364 |
| CNT | 22980 |



CUSTOMER IS RESPONSIBLE FOR PROPER COOLING OF FILTER COMPONENTS. CAPACITORS MAXIMUM AMBIENT 50°C.

CUSTOMER IS RESPONSIBLE FOR INSTALLATION TO MEET ALL NATIONAL AND LOCAL ELECTRICAL CODES.

| | | | | | |
|----|----------|------|----|--|---|
| | | | | TOLERANCES EXCEPT AS NOTED: DECIMAL XX ± .03 .XXX ± .01 FRACTIONAL ± 1/32 ANGULAR ± 1/2° | 7878 N. 86th STREET MILWAUKEE, WI 53224 HG75AW00STC, 75HP 480/3/60, OPEN, WITH CNT DWS DATE 7/2/08 DWS DEL 103533DG SCALE TO SCALE |
| NO | REVISION | DATE | BY | | |