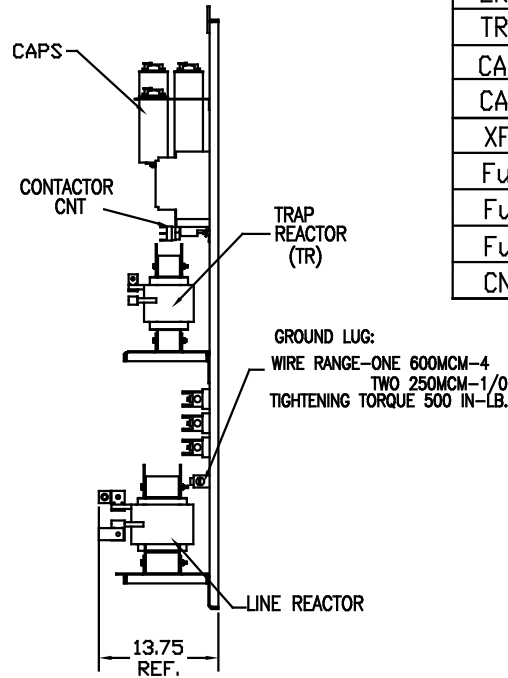


CUSTOMER CONNECTION OUTPUT:
 WIRE RANGE—ONE 600MCM-4
 TWO 250MCM-1/0
 TIGHTENING TORQUE 500 IN-LB.



| UNIT SPECIFICATIONS: | | | | | |
|----------------------|----------|------------------|----|-------|-----|
| KVAR | HARMONIC | VOLT | HZ | PHASE | HP |
| 75 | 5TH | 480 | 60 | 3 | 250 |
| ENCLOSURE | | WHITE OPEN PANEL | | | |
| APPROX.WT. LBS. | | 370 | | | |

| SYMBOL | TCI PART NUMBER |
|-------------------------------|-----------------|
| LR | KDRS2T |
| TR | KTR75A65HG |
| CAP.1, CAP.2, CAP.3 (20 KVAR) | KCAP20A6B |
| CAP.4 (5 KVAR) | KCAP5A6A |
| XFMR. | 23894 |
| Fu1;2;3 | 13333 |
| Fu4,6 | 13203 |
| Fu5 | 13362 |
| CNT | 23368 |

FOR SCHEMATIC SEE DWG# 26690

CUSTOMER IS RESPONSIBLE FOR PROPER COOLING OF FILTER COMPONENTS.
 CAPACITORS MAXIMUM AMBIENT 50°C
 PC BOARD MAX. AMBIENT 40°C.

CUSTOMER IS RESPONSIBLE FOR INSTALLATION TO MEET ALL NATIONAL AND LOCAL ELECTRICAL CODES.

| | | | | | | | |
|----|----------|------|----|--|----------------------------|--|--|
| | | | | | TOLERANCES EXCEPT AS NOTED | 7878 N. 86th STREET MILWAUKEE, WI 53224 HG250AW00STC, HG7 W/CNT 250 HP, 480/3/60, OPEN | |
| | | | | | DECIMAL | | |
| | | | | | .XX ±.03 .XXX±.01 | | |
| | | | | | FRACTIONAL ± 1/32 | | |
| | | | | | ANGULAR ± 1/2° | | |
| NO | REVISION | DATE | BY | | | DRN BY DSW DATE 7/23/08 SCALE TO FIT APPRVD. B 103538DG SHT.1 of 1 | |