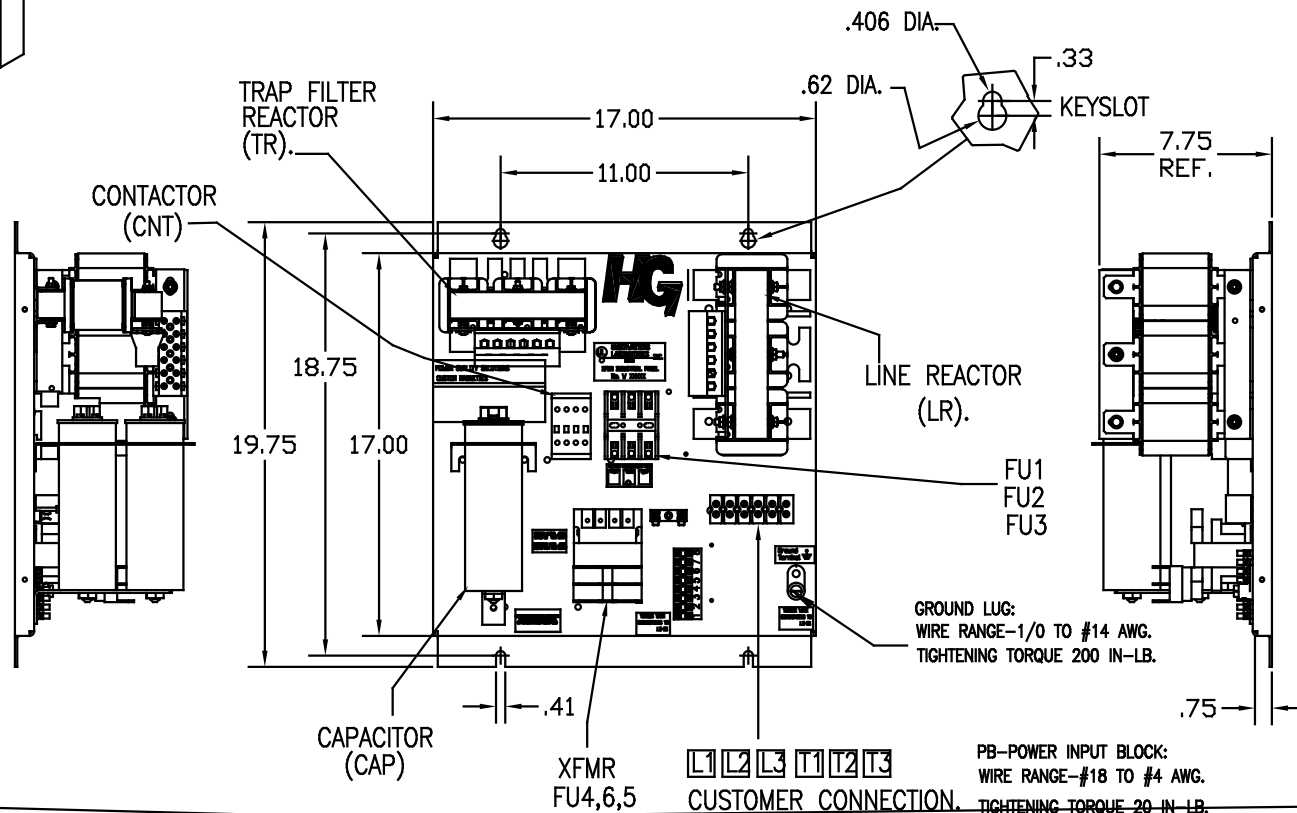


SEE DWG# 26689 FOR SCHEMATIC

UNIT SPECIFICATIONS:					
KVAR	HARMONIC	VOLT	HZ	PHASE	HP
6	5TH	480	60	3	20
ENCLOSURE		WHITE OPEN PANEL			
APPROX.WT. LBS.		65			

SYMBOL	TCI PART NUMBER
LR	KDRF2T
TR	KTR6A65HG
CAP1, CAP2, (3 KVAR)	KCAP3A6A
XFMR.	23891
Fu1, 2, 3	15752
Fu4,6	21270
Fu5	13364
CNT	12434



GROUND LUG:
WIRE RANGE-1/0 TO #14 AWG.
TIGHTENING TORQUE 200 IN-LB.

PB-POWER INPUT BLOCK:
WIRE RANGE-#18 TO #4 AWG.
TIGHTENING TORQUE 20 IN-LB.

CUSTOMER IS RESPONSIBLE FOR PROPER COOLING OF FILTER COMPONENTS. CAPACITORS MAXIMUM AMBIENT 50°C.

CUSTOMER IS RESPONSIBLE FOR INSTALLATION TO MEET ALL NATIONAL AND LOCAL ELECTRICAL CODES.

NO	REVISION	DATE	BY	TOLERANCES EXCEPT AS NOTED
				DECIMAL
				.XX ± .03
				.XXX ± .01
				FRACTIONAL ± 1/32
				ANGULAR ± 1/2°

TCI 7878 N. 86th STREET
MILWAUKEE, WI 53224

HG20AW00STC, 20 HP
480/3/60, OPEN, WITH CNT

DRN BY	DATE	DWG. NO.
DSW	7/01/08	B 103527DG
SCALE	APPRV.	
TO FIT		SHT. 1 of 1