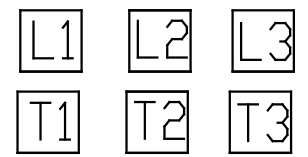
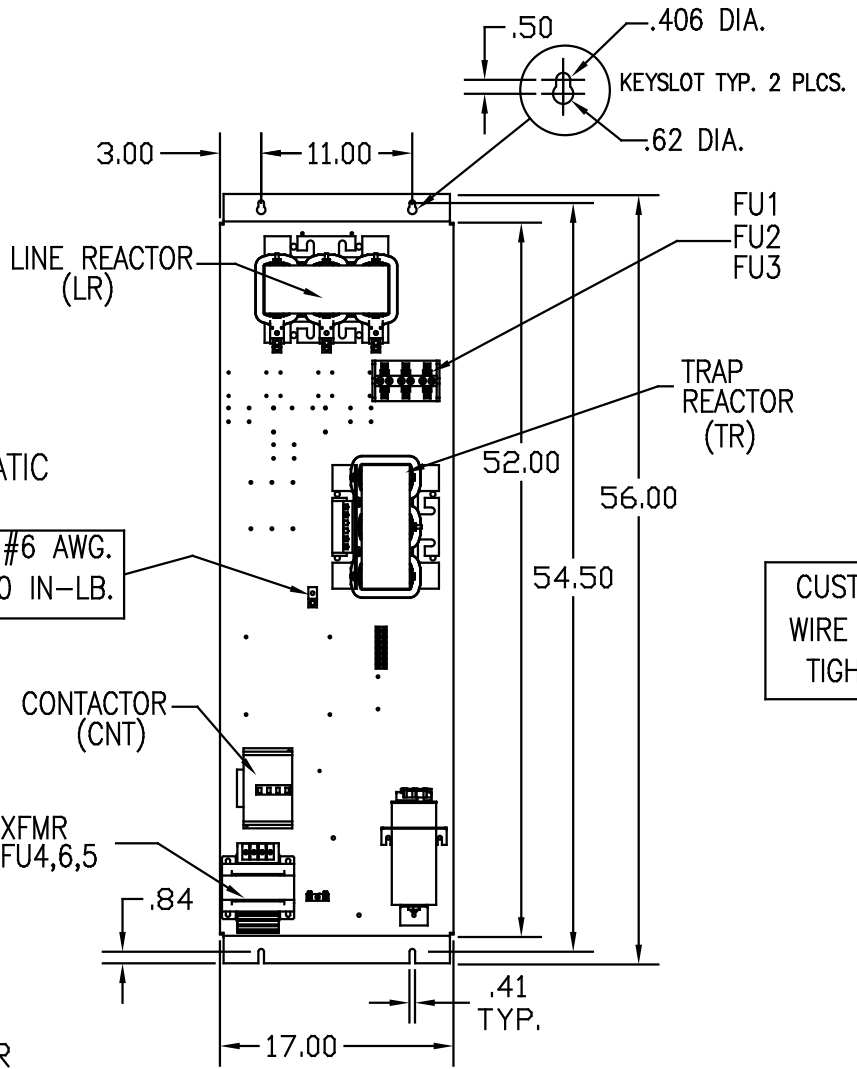


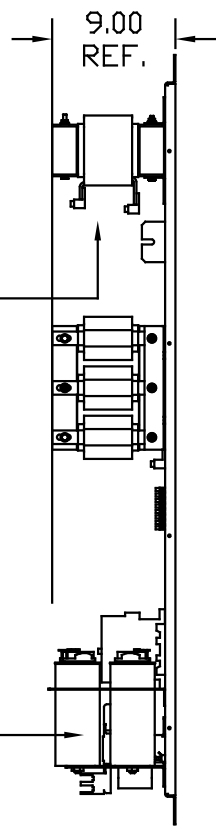
UNIT SPECIFICATIONS:					
KVAR	HARMONIC	VOLT	HZ	PHASE	HP
30	5TH	480	60	3	100
ENCLOSURE		WHITE OPEN PANEL			
APPROX.WT. LBS.		205			

SYMBOL	TCI PART NUMBER
LR	KDRJ1T
TR	KTR30A65HG
CAP.1, CAP2 (15 KVAR)	KCAP15A6B
XFMR.	23891
Fu1,2,3	11006
Fu4,6	21270
Fu5	13364
CNT	22980

SEE DWG# 26690 FOR SCHEMATIC
 GROUND LUG:
 WIRE RANGE: 2/0 TO #6 AWG.
 TIGHTENING TORQUE 120 IN-LB.



CUSTOMER CONNECTION:
 WIRE RANGE: 2/0 TO #6 AWG.
 TIGHTENING TORQUE 120 IN-LB.



CUSTOMER IS RESPONSIBLE FOR PROPER COOLING OF FILTER COMPONENTS. CAPACITORS MAXIMUM AMBIENT 50°C.

CUSTOMER IS RESPONSIBLE FOR INSTALLATION TO MEET ALL NATIONAL AND LOCAL ELECTRICAL CODES.

				TOLERANCES UNLESS OTHERWISE SPECIFIED	7878 N. 86th STREET MILWAUKEE, WI 53224
				.XX ± .03 .XXX ± .01 FUNCTIONAL ± 1/32 FRACTIONAL ± 1/2"	
NO	REVISION	DATE	BY	SCALE	HG100AW00STC, 100HP 480/3/60, OPEN, WITH CNT DESIGNED BY DSW DATE 7/3/08 DRAWN BY C 103534DG SCALE TO SCALE SH. 1 OF 1