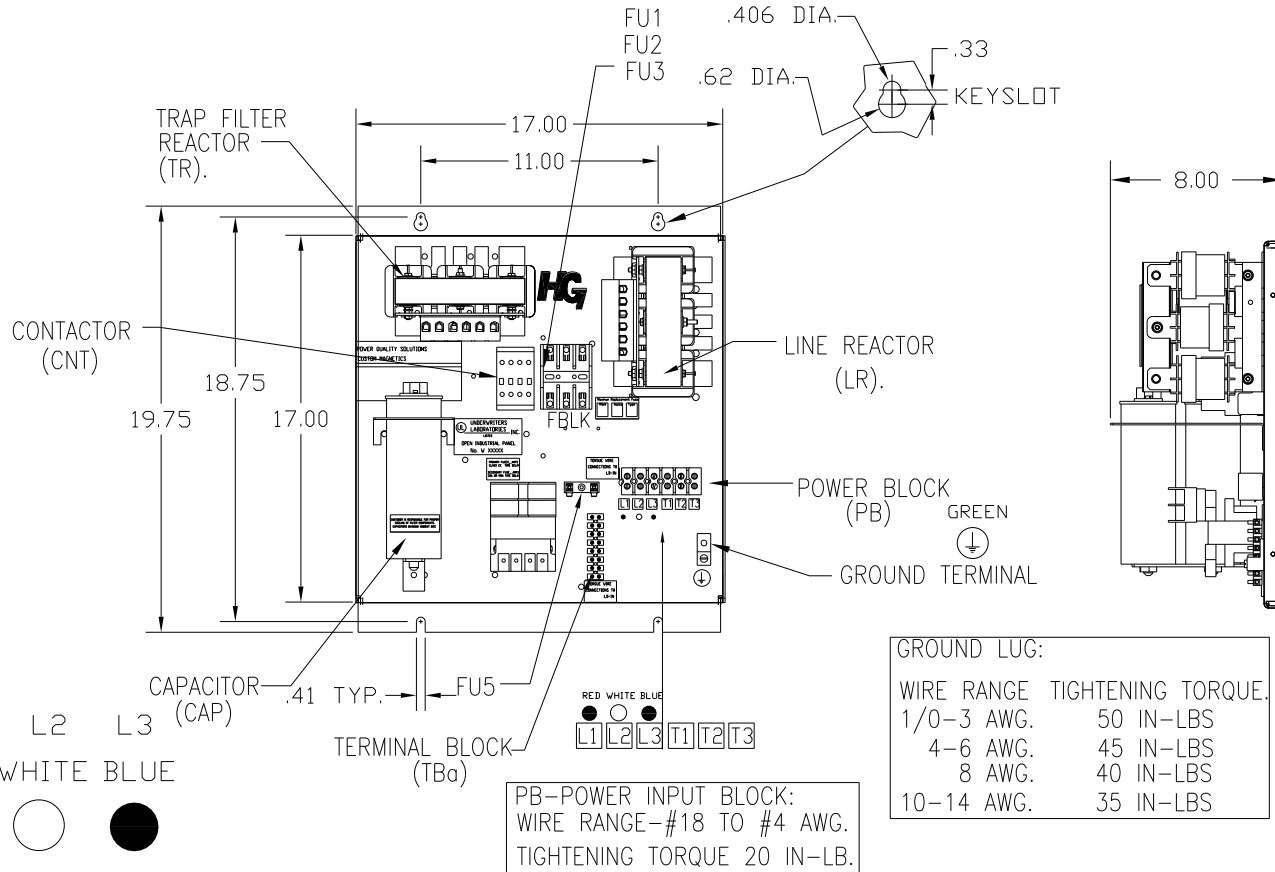


UNIT SPECIFICATIONS:					
KW	HARMONIC	VOLT	HZ	PHASE	FLA
9.3	5TH	400	50	3	20
ENCLOSURE		WHITE OPEN PANEL			
APPROX.WT. LBS.		51			

SEE 27703 FOR SCHEMATIC

SYMBOL	TCI PART NUMBER
LR	KDRE32T
TR	KTR3L55HG
CAP, 1, 2, (3 KVAR)	KCAP3A6A
XFMR.	24385
Fu1, 2, 3	22923
Fu4,6	13180
Fu5	13364
CNT	12434



CUSTOMER IS RESPONSIBLE FOR PROPER COOLING OF FILTER COMPONENTS. CAPACITORS MAXIMUM AMBIENT 50°C.

CUSTOMER IS RESPONSIBLE FOR INSTALLATION TO MEET ALL NATIONAL AND LOCAL ELECTRICAL CODES.

				TOLERANCES (EXCEPT AS NOTED)	TCI 7878 N. 86th STREET MILWAUKEE, WI 53224		
				DECIMAL	HG9LW00STC, 9.3KW 400/3/50, OPEN		
				XX ± .03			
				XXX ± .01			
				FRACTIONAL ± 1/32			
A	AS BUILT	5/11/11	DSW	ANGULAR ± 1/2°	DRN. BY DSW	DATE 05/11/2011	DWG. NO. 104682DG
NO	REVISION	DATE	BY		SCALE TO FIT	APRVD	SHT. 1 OF 1