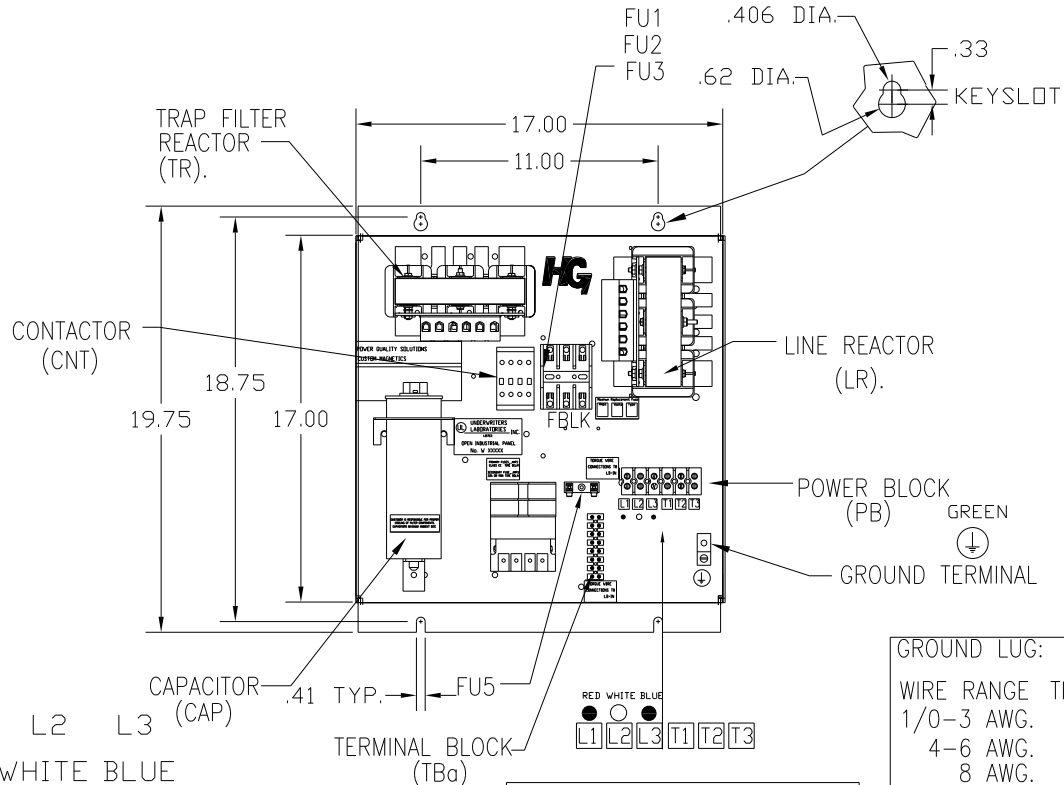


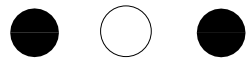
UNIT SPECIFICATIONS:					
KW	HARMONIC	VOLT	HZ	PHASE	FLA
7.5	5TH	400	50	3	16
ENCLOSURE		WHITE OPEN PANEL			
APPROX.WT. LBS.		48			

SEE 27703 FOR SCHEMATIC

SYMBOL	TCI PART NUMBER
LR	KDRE31T
TR	KTR2L55HG
CAP, 1.. (5 KVAR)	KCAP5A6A
XFMR.	24385
Fu1, 2, 3	22927
Fu4,6	13180
Fu5	13364
CNT	12434



L1 L2 L3
RED WHITE BLUE



NOTE: DOTS PLACED NEAR PB BLOCK.
L1) RED, (L2) WHITE, (L3) BLUE.

PB-POWER INPUT BLOCK:
WIRE RANGE-#18 TO #4 AWG.
TIGHTENING TORQUE 20 IN-LB.

GROUND LUG:	
WIRE RANGE	TIGHTENING TORQUE
1/0-3 AWG.	50 IN-LBS
4-6 AWG.	45 IN-LBS
8 AWG.	40 IN-LBS
10-14 AWG.	35 IN-LBS

CUSTOMER IS RESPONSIBLE FOR
PROPER COOLING OF FILTER COMPONENTS.
CAPACITORS MAXIMUM AMBIENT 50°C.

CUSTOMER IS RESPONSIBLE FOR INSTALLATION
TO MEET ALL NATIONAL AND LOCAL ELECTRICAL CODES.

TOLERANCES (EXCEPT AS NOTED)				7878 N. 86th STREET MILWAUKEE, WI 53224	
			DECIMAL	HG7LW00STC, 7.5KW 400/3/50, OPEN	
			XX ± .03		
			XXX ± .01		
			FRACTIONAL	DRN. BY DSW DATE 05/11/2011 DWG. NO. 104681DG	
			± 1/32		
A	AS BUILT	5/11/11	DSW	SCALE TO FIT	APRVD 05/11/2011
NO	REVISION	DATE	BY	ANGULAR	± 1/2°