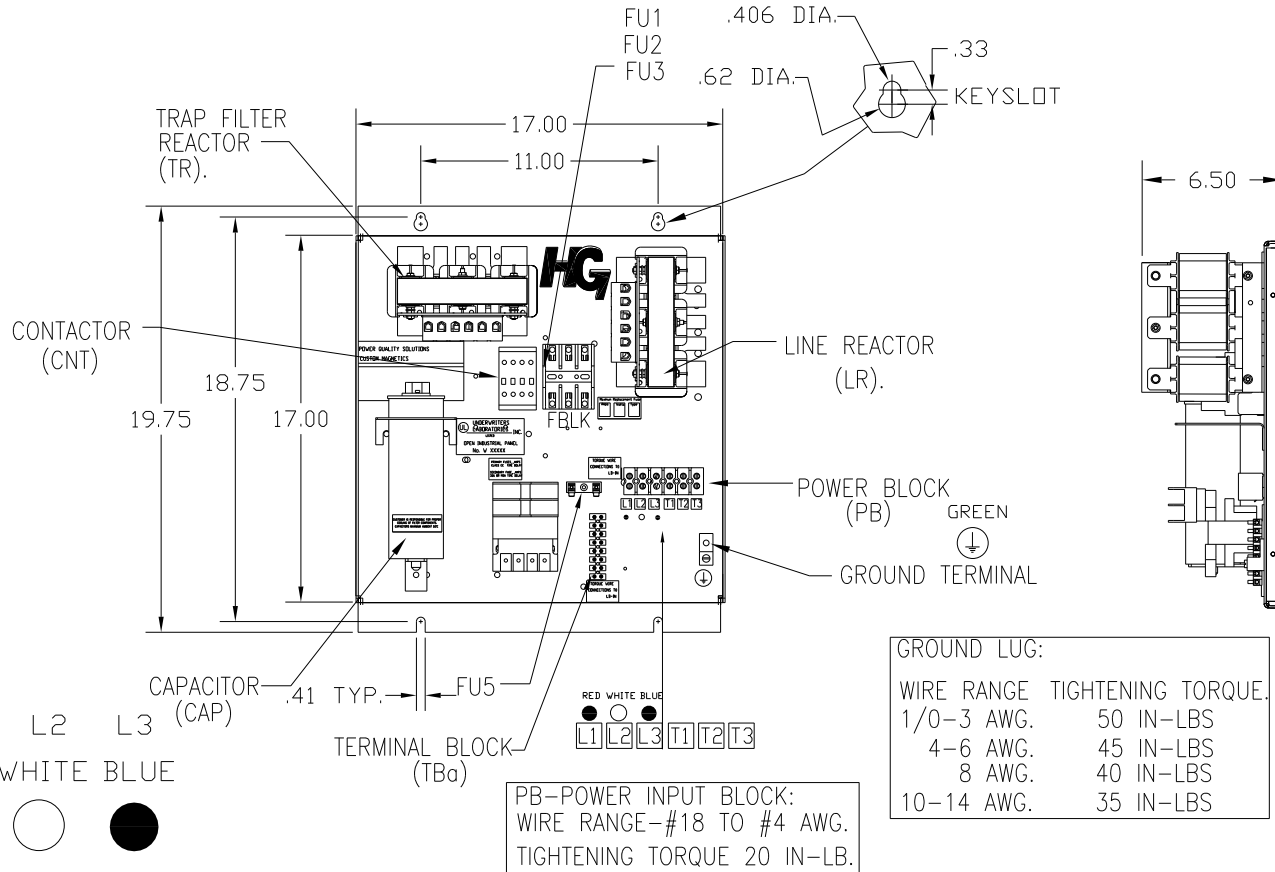


| UNIT SPECIFICATIONS: | | | | | |
|----------------------|----------|------------------|----|-------|-----|
| KW | HARMONIC | VOLT | HZ | PHASE | FLA |
| 5.5 | 5TH | 400 | 50 | 3 | 12 |
| ENCLOSURE | | WHITE OPEN PANEL | | | |
| APPROX.WT. LBS. | | 42 | | | |

SEE 27703 FOR SCHEMATIC

| SYMBOL | TCI PART NUMBER |
|-------------------|-----------------|
| LR | KDRC31T |
| TR | KTR2L55HG |
| CAP, 1.. (5 KVAR) | KCAP5A6A |
| XFMR. | 24385 |
| Fu1, 2, 3 | 23407 |
| Fu4,6 | 13180 |
| Fu5 | 13364 |
| CNT | 12434 |



CUSTOMER IS RESPONSIBLE FOR PROPER COOLING OF FILTER COMPONENTS. CAPACITORS MAXIMUM AMBIENT 50°C.

CUSTOMER IS RESPONSIBLE FOR INSTALLATION TO MEET ALL NATIONAL AND LOCAL ELECTRICAL CODES.

| TOLERANCES (EXCEPT AS NOTED) | | | | TCI 7878 N. 86th STREET MILWAUKEE, WI 53224 | |
|------------------------------|----------|---------|-------------------|---|-------------------|
| | | | DECIMAL | HG5LW00STC, 5.5KW 400/3/50, OPEN | |
| | | | XX ± .03 | | |
| | | | XXX ± .01 | | |
| | | | FRACTIONAL ± 1/32 | | |
| A | AS BUILT | 5/11/11 | DSW | DRN. BY DSW | DATE 05/11/2011 |
| NO | REVISION | DATE | BY | ANGULAR ± 1/2° | APRVD |
| | | | | SCALE TO FIT | DWG. NO. 104680DG |
| | | | | | SHT. 1 OF 1 |