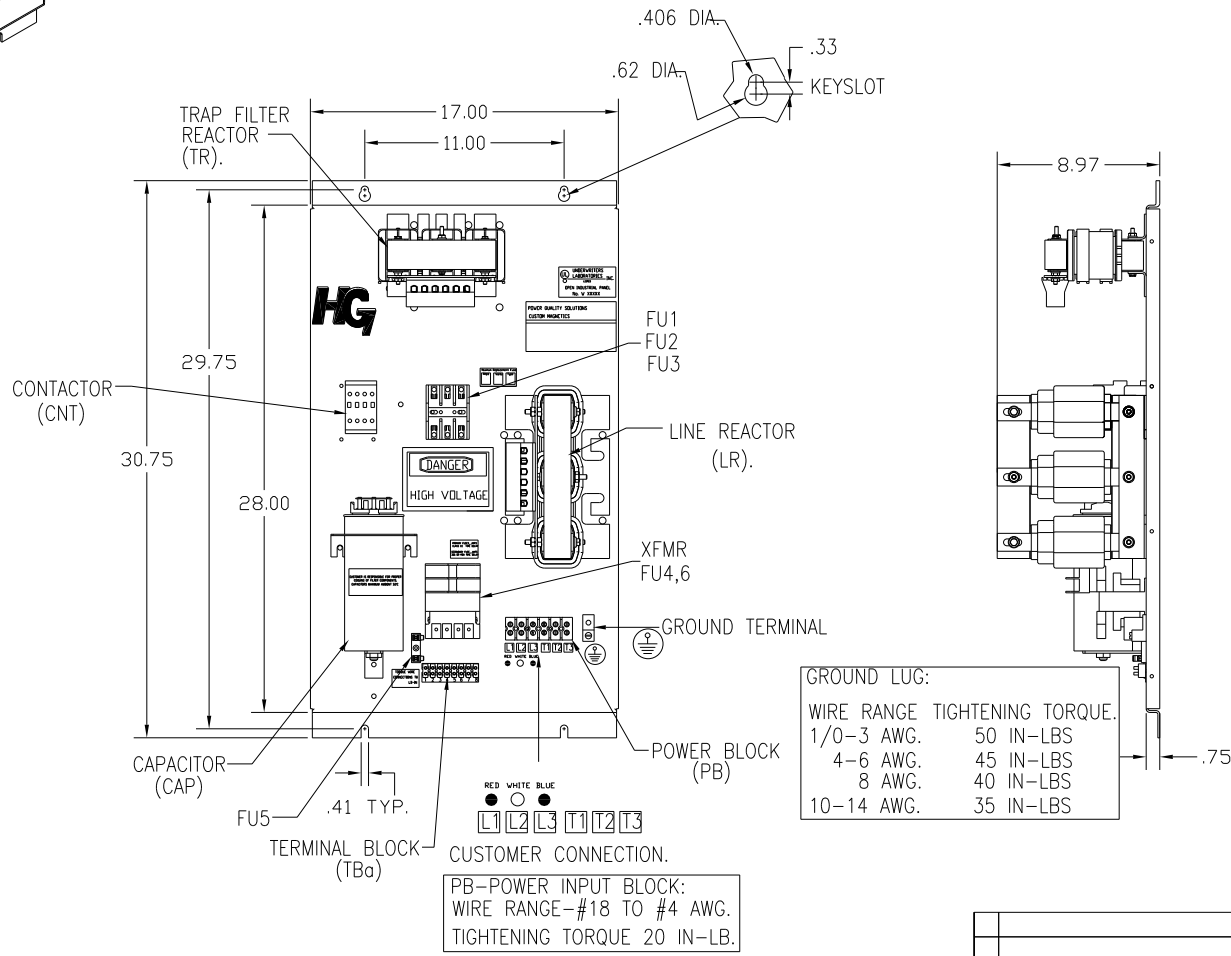
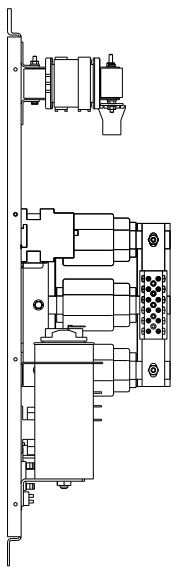
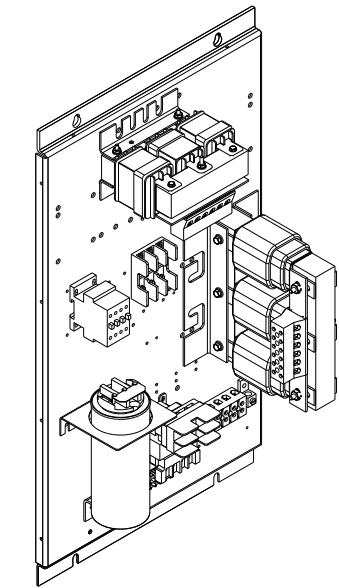


UNIT SPECIFICATIONS:					
KW	HARMONIC	VOLT	HZ	PHASE	FLA
15	5TH	400	50	3	32
ENCLOSURE		WHITE OPEN PANEL			
APPROX.WT. LBS.		80			



GROUND LUG:

WIRE RANGE	TIGHTENING TORQUE.
1/0-3 AWG.	50 IN-LBS
4-6 AWG.	45 IN-LBS
8 AWG.	40 IN-LBS
10-14 AWG.	35 IN-LBS

SYMBOL	TCI PART NUMBER
LR	KDRH32T
TR	KTR5L55HG
CAP1. (10 KVAR)	KCAP10A6B
XFMR.	24385
Fu1, 2, 3	15752
Fu4,6	13180
Fu5	13364
CNT	12434

CUSTOMER IS RESPONSIBLE FOR PROPER COOLING OF FILTER COMPONENTS. CAPACITORS MAXIMUM AMBIENT 50°C.

CUSTOMER IS RESPONSIBLE FOR INSTALLATION TO MEET ALL NATIONAL AND LOCAL ELECTRICAL CODES.

SEE DRAWING# 27703 FOR SCHEMATIC

TOLERANCES (EXCEPT AS NOTED)		TCI		7878 N. 86th STREET MILWAUKEE, WI 53224	
	DECIMAL	XX ± .03		HG15LW00STC, 15KW 400/3/50, OPEN, WITH CNT.	
	FRACTIONAL	XXX ± .01			
	ANGULAR	± 1/32			
A	AS BUILT	11/04/10	DSW	DRN. BY DSW	DATE 11/04/2010
NO	REVISION	DATE	BY	SCALE TO FIT	APPRVD
					DWG. NO. 104518DG
					SHT. 1 OF 1