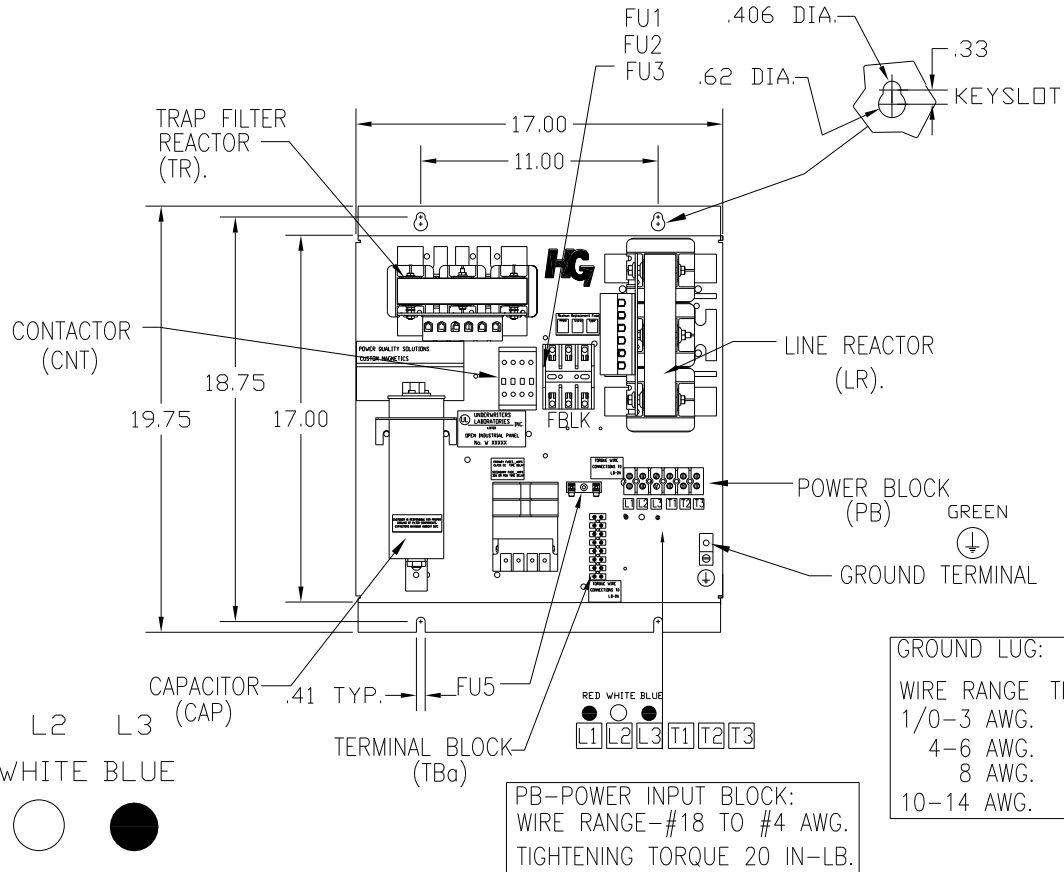


UNIT SPECIFICATIONS:					
KW	HARMONIC	VOLT	HZ	PHASE	FLA
11	5TH	400	50	3	24
ENCLOSURE		WHITE OPEN PANEL			
APPROX.WT. LBS.		58			

SEE 27703 FOR SCHEMATIC

SYMBOL	TCI PART NUMBER
LR	KDRF31T
TR	KTR4L55HG
CAP, 1.. (3 KVAR)	KCAP3A6A
CAP, 2.. (5 KVAR)	KCAP5A6A
XFMR.	24385
Fu1, 2, 3	22924
Fu4,6	13180
Fu5	13364
CNT	12434



GROUND LUG:

WIRE RANGE	TIGHTENING TORQUE
1/0-3 AWG.	50 IN-LBS
4-6 AWG.	45 IN-LBS
8 AWG.	40 IN-LBS
10-14 AWG.	35 IN-LBS

CUSTOMER IS RESPONSIBLE FOR PROPER COOLING OF FILTER COMPONENTS. CAPACITORS MAXIMUM AMBIENT 50°C.

CUSTOMER IS RESPONSIBLE FOR INSTALLATION TO MEET ALL NATIONAL AND LOCAL ELECTRICAL CODES.

TOLERANCES (EXCEPT AS NOTED)				TOLERANCES (EXCEPT AS NOTED)		TOLERANCES (EXCEPT AS NOTED)	
				DECIMAL			
				XX ± .03			
				XXX ± .01			
				FRACTIONAL			
				± 1/32			
				ANGULAR			
				± 1/2°			
A	AS BUILT	5/11/11	DSW	DATE	05/11/2011	DWG. NO.	104683DG
NO	REVISION	DATE	BY	SCALE	TO FIT	APRVD	SHT. 1 OF 1

TCI 7878 N. 86th STREET MILWAUKEE, WI 53224

HG11LW00STC, 11KW 400/3/50, OPEN