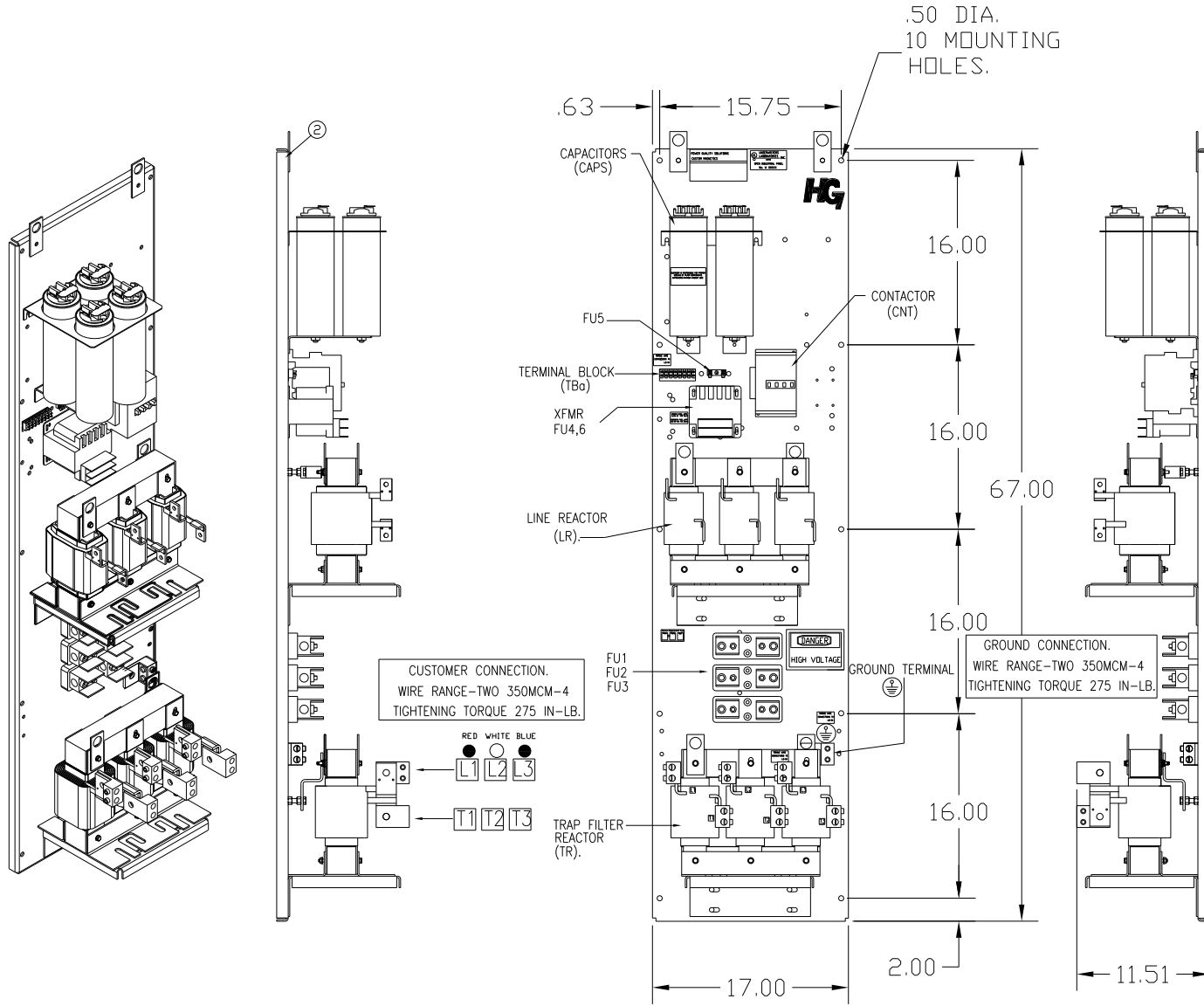


UNIT SPECIFICATIONS:					
KW	HARMONIC	VOLT	HZ	PHASE	FLA
110	5TH	400	50	3	210
ENCLOSURE		WHITE OPEN PANEL			
APPROX.WT. LBS.		300			



SYMBOL	TCI PART NUMBER
LR	KDRL33T
TR	KTR45L55HG
CAP1,2,3,4 (20 KVAR)	KCAP20A6B
XFMR.	24393
Fu1, 2, 3	13334
Fu4,6	24073
Fu5	24012
CNT	19245

CUSTOMER IS RESPONSIBLE FOR PROPER COOLING OF FILTER COMPONENTS. CAPACITORS MAXIMUM AMBIENT 50°C.

CUSTOMER IS RESPONSIBLE FOR INSTALLATION TO MEET ALL NATIONAL AND LOCAL ELECTRICAL CODES.

SEE DRAWING# 27703 FOR SCHEMATIC

		TOLERANCES (EXCEPT AS NOTED)		7878 N. 86th STREET MILWAUKEE, WI 53224	
		DECIMAL		HG110LW00STC, 110KW	
		XX ± .03		400/3/50, OPEN, WITH CNT.	
		XXX ± .01			
		FRACTIONAL		DRN. BY DSW DATE 11/04/2010 DWG. NO. 104526DG	
		± 1/32		SCALE TO FIT	
		ANGULAR		APRVD	
		± 1/2°		SHT. 1 OF 1	
A	AS BUILT	11/04/10	DSW		
NO	REVISION	DATE	BY		