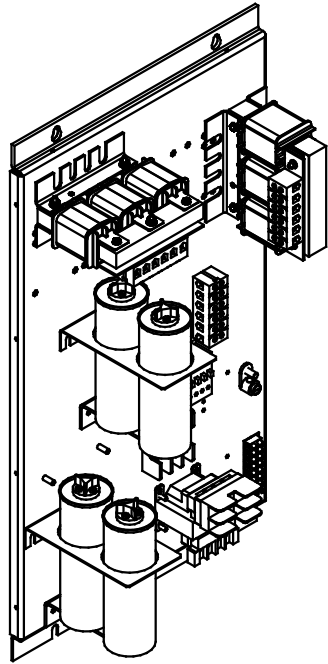
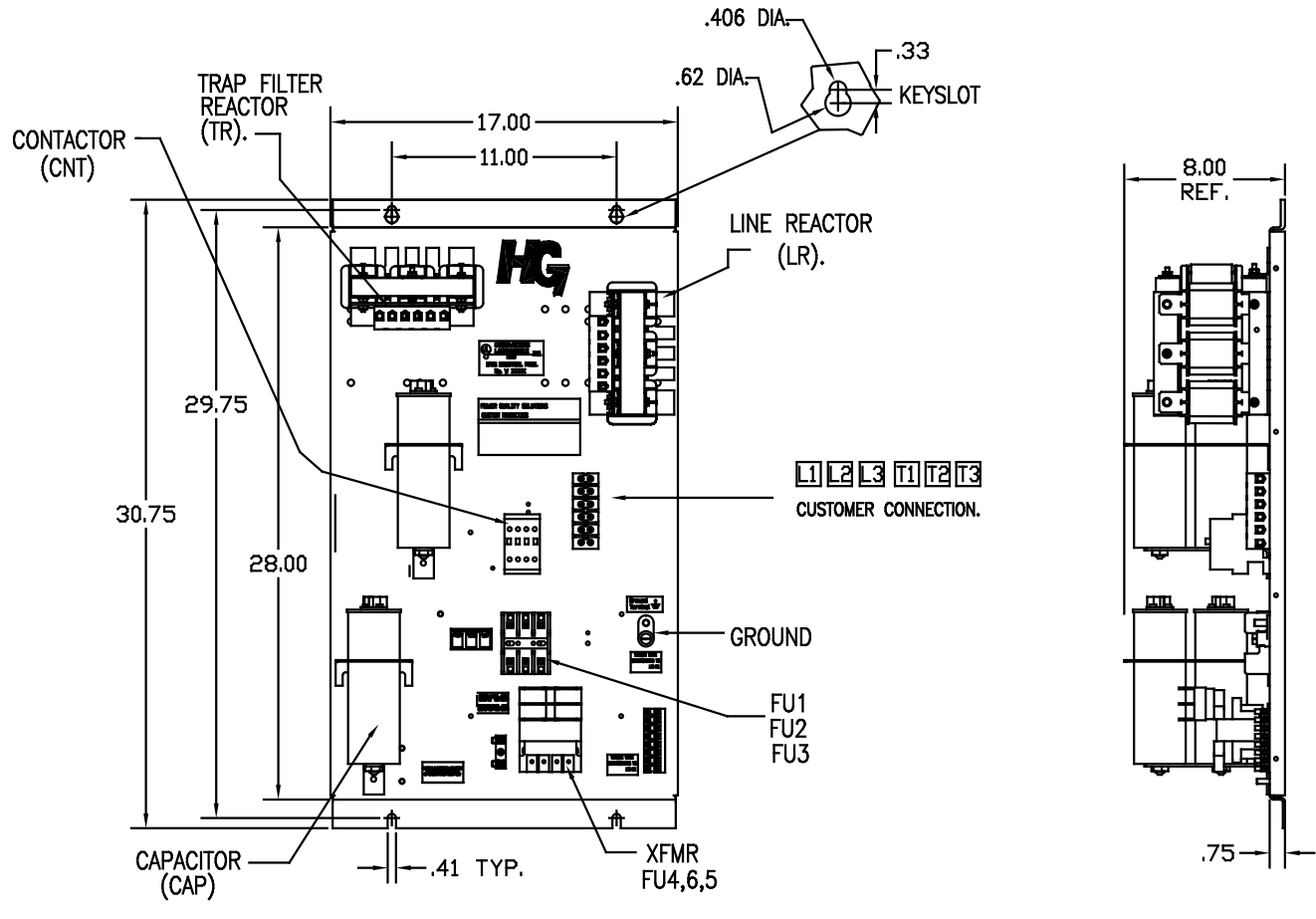


SEE 26822 FOR SCHEMATIC



PB-POWER INPUT BLOCK:  
WIRE RANGE-#18 TO #4 AWG.  
TIGHTENING TORQUE 20 IN-LB.

GROUND LUG:  
WIRE RANGE-1/0 TO #14 AWG.  
TIGHTENING TORQUE 200 IN-LB.



UNIT SPECIFICATIONS:					
KVAR	HARMONIC	VOLT	HZ	PHASE	HP
3	5TH	240	60	3	7.5
ENCLOSURE		WHITE OPEN PANEL			
		WITH CONTACTOR			
APPROX.WT. LBS.		65			

SYMBOL	TCI PART NUMBER
LR	KDRC21T
TR	KTR3B65HG
CAP1,2,3,4	KCAP3A6A
XFMR.	23891
Fu1, 2, 3	15752
Fu4,6	24073
Fu5	13364
CNT	12434

CUSTOMER IS RESPONSIBLE FOR  
PROPER COOLING OF FILTER COMPONENTS.  
CAPACITORS MAXIMUM AMBIENT 50°C.

CUSTOMER IS RESPONSIBLE FOR INSTALLATION  
TO MEET ALL NATIONAL AND LOCAL ELECTRICAL CODES.

				TOLERANCES EXCEPT AS NOTED:		7878 N. 86th STREET MILWAUKEE, WI 53224	
				DECIMAL			
				XX ±.03		HG8BW00STC, 7.5HP 240/3/60, OPEN, WITH CNT	
				.XXX±.01			
				FRACTIONAL		DRG BY DSW DATE 10/09/08 DWG. NO. 103599DG SCALE TO SCALE	
				± 1/32			
				ANGULAR		SHT. 1 of 1	
				± 1/2°			
NO.	REVISION	DATE	BY				