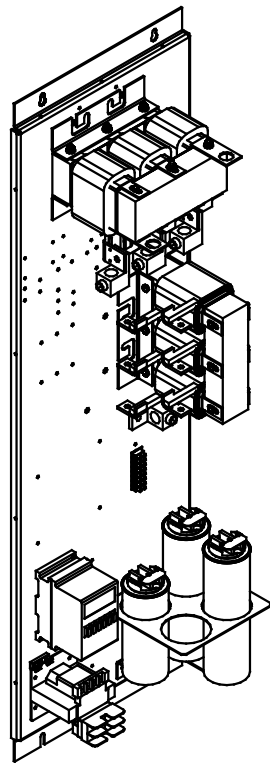


SEE 26824 FOR SCHEMATIC
 SEE 26699-240V FOR DECAL LOCATIONS.
 SEE PKLB58 FOR DECAL PARTS LIST



GROUND LUG:
 WIRE RANGE- ONE 600MCM-4
 TWO 250MCM-1/0
 TIGHTENING TORQUE 500 IN-LB.

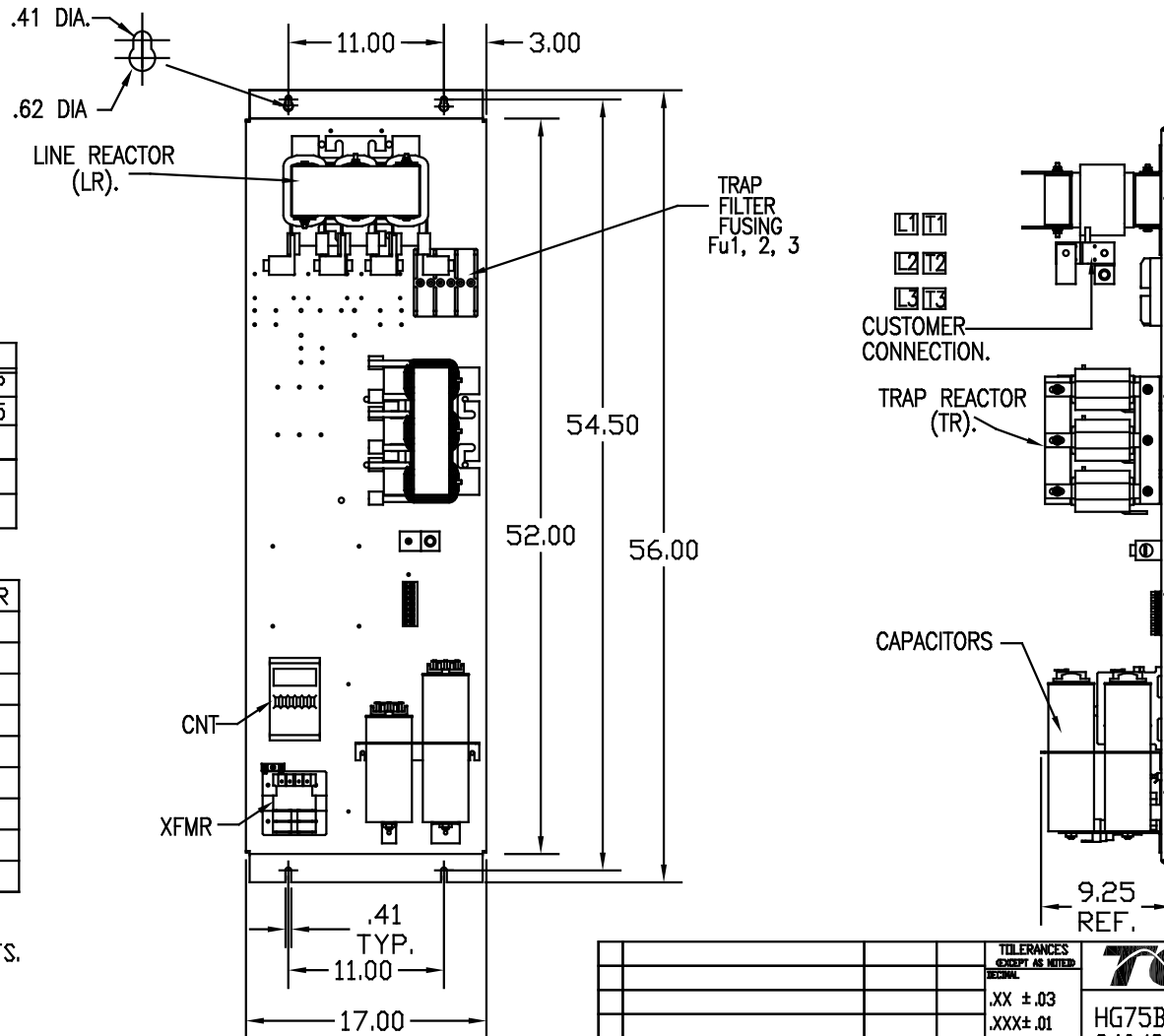
CUSTOMER
 OUTPUT CONNECTION.
 WIRE RANGE- ONE 600MCM-4
 TWO 250MCM-1/0
 TIGHTENING TORQUE 500 IN-LB.

UNIT SPECIFICATIONS:				
KVAR	HARMONIC	VOLT	HZ	PHASE HP
25	5TH	240	60	3 75
ENCLOSURE	WHITE OPEN PANEL			
FEATURES	WITH CONTACTOR			
APPROX.WT. LBS.	200			

SYMBOL	TCI PART NUMBER
LR	KDRJ21T
TR	KTR25B65HG
CAP1 (10 KVAR)	KCAP10B6B
CAP2 (5 KVAR)	KCAP5B6B
XFMR.	23894
Fu1a;2a;3a	11077
Fu4,6	23951
Fu5	13362
CNT	19246

CUSTOMER IS RESPONSIBLE FOR
 PROPER COOLING OF FILTER COMPONENTS.
 CAPACITORS MAXIMUM AMBIENT 50°C.

CUSTOMER IS RESPONSIBLE FOR INSTALLATION
 TO MEET ALL NATIONAL AND LOCAL ELECTRICAL CODES.



NO	REVISION	DATE	BY	TOLERANCES EXCEPT AS NOTED: DECIMAL XX ± .03 .XXX ± .01 FRACTIONAL ± 1/32 ANGULAR ± 1/2°	SCALE TO SCALE
				TOLERANCES EXCEPT AS NOTED: DECIMAL XX ± .03 .XXX ± .01 FRACTIONAL ± 1/32 ANGULAR ± 1/2°	
				7878 N. 86th STREET MILWAUKEE, WI 53224	
				HG75BW00STC, 75HP 240/3/60, OPEN, WITH CNT	
				DRW BY DSW DATE 10/10/08 DWG. NO. 103608DG SCALE TO SCALE	SHT. 1 OF 1