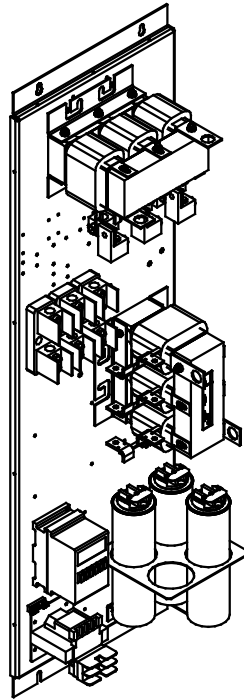


SEE 26824 FOR SCHEMATIC



CUSTOMER CONNECTION OUTPUT:
 WIRE RANGE—ONE 600MCM-4
 TWO 250MCM-1/0
 TIGHTENING TORQUE 500 IN-LB.

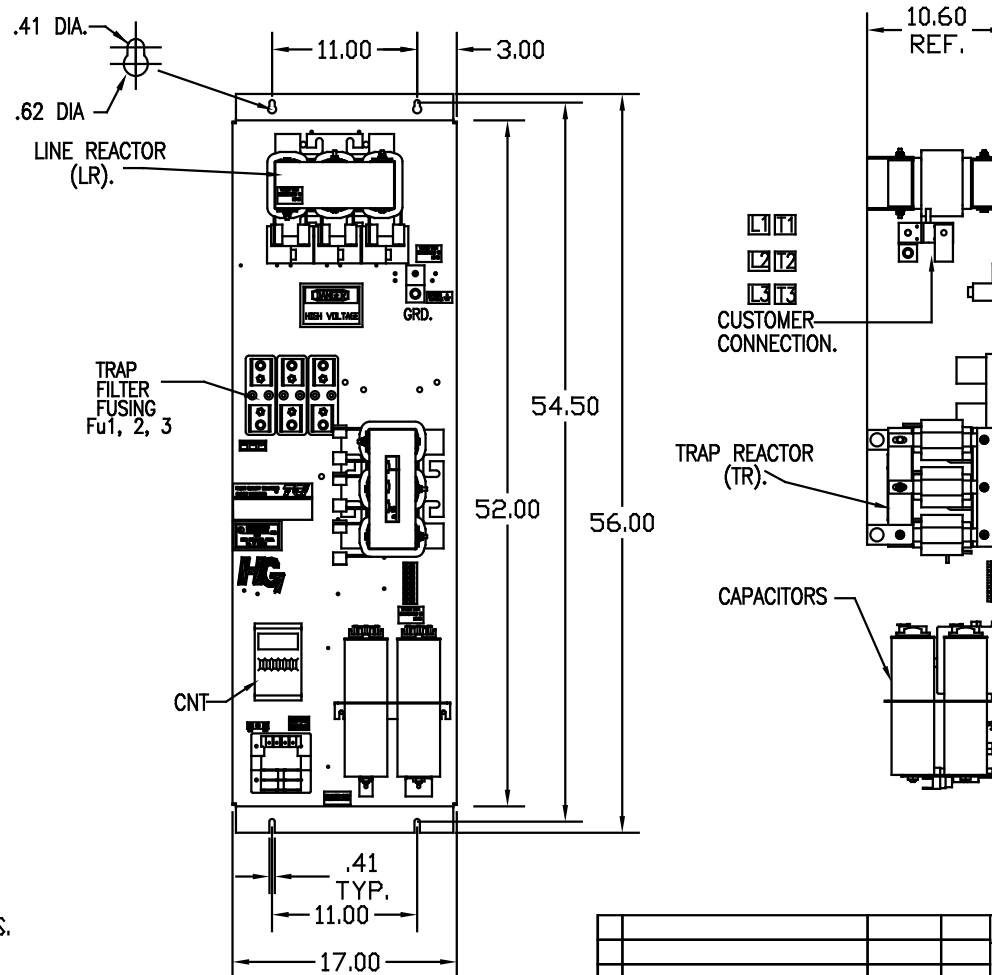
GROUND LUG:
 WIRE RANGE—ONE 600MCM-4
 TWO 250MCM-1/0
 TIGHTENING TORQUE 500 IN-LB.

UNIT SPECIFICATIONS:					
KVAR	HARMONIC	VOLT	HZ	PHASE	HP
30	5TH	240	60	3	100
ENCLOSURE		WHITE OPEN PANEL			
FEATURES		WITH CONTACTOR			
APPROX.WT. LBS.		210			

SYMBOL	TCI PART NUMBER
LR	KDRJ21T
TR	KTR30B65HG
CAP1, 2, 3 (10 KVAR)	KCAP10B6B
XFMR.	23894
Fu1a,2a,3a	11171
Fu4,6	23951
Fu5	13362
CNT	19246

CUSTOMER IS RESPONSIBLE FOR PROPER COOLING OF FILTER COMPONENTS. CAPACITORS MAXIMUM AMBIENT 50°C.

CUSTOMER IS RESPONSIBLE FOR INSTALLATION TO MEET ALL NATIONAL AND LOCAL ELECTRICAL CODES.



				TOLERANCES EXCEPT AS NOTED:		7878 N. 86th STREET MILWAUKEE, WI 53224	
				DECIMAL			
				XX ±.03		HG100BW00STC, 100HP 240/3/60, OPEN, WITH CNT DRG. BY DSW DATE 10/10/08 DWG. NO. 103609DG SCALE TO SCALE REV. C SH. 1 of 1	
				XXX ±.01			
				FRACTIONAL ± 1/32			
				ANGULAR ± 1/2°			
NO.	REVISION	DATE	BY				