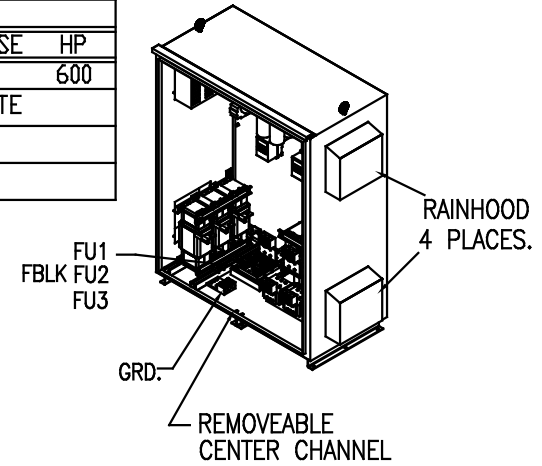
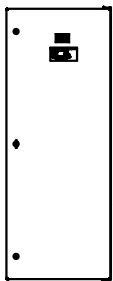


SEE DWG# 26964-1 FOR SCHEMATIC
 NOTE: USE ONLY HUBS OR FITTINGS THAT COMPLY WITH UL514B FOR TYPE 3R ENCLOSURES.
 CUSTOMER IS RESPONSIBLE FOR INSTALLATION TO MEET ALL NATIONAL AND LOCAL ELECTRICAL CODES.

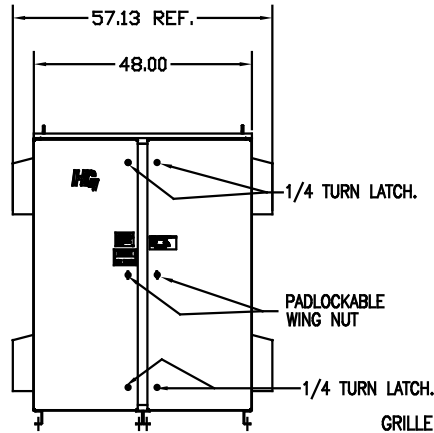
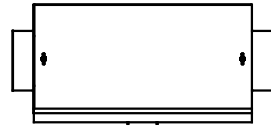
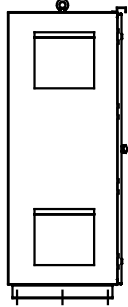
UNIT SPECIFICATIONS:					
KVAR	HARMONIC	VOLT	HZ	PHASE	HP
180	5TH	600	60	3	600
ENCLOSURE		TYPE 3R- COLOR, WHITE			
FEATURES		CONTACTOR			
APPROX.WT. LBS		1191			



INSIDE DOOR

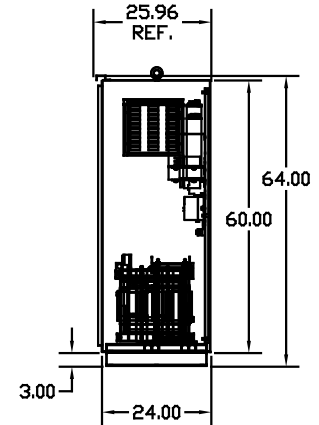
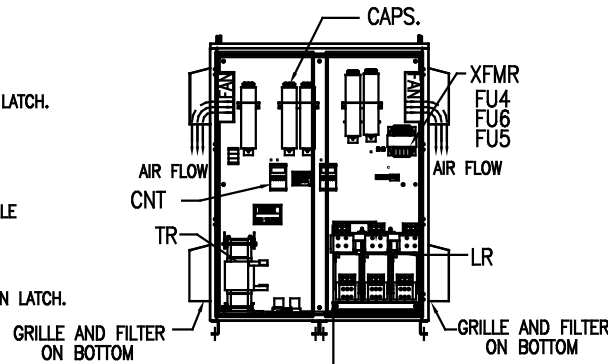


SIDE VIEW



FRONT VIEW WITH DOORS.

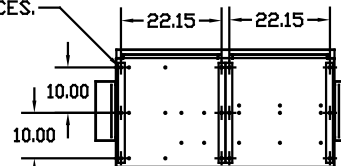
FRONT VIEW WITHOUT DOORS



SIDE VIEW

.50 DIA HOLES 12 PLACES.

L1 L2 L3 T1 T2 T3
 SUGGESTED CUSTOMER WIRE ENTRY AND EXIT LOCATION



BOTTOM VIEW

GROUND LUG:
 WIRE RANGE-TWO 600MCM-2
 TIGHTENING TORQUE 500 IN.-LB.

CUSTOMER INPUT/OUTPUT CONNECTIONS:
 WIRE RANGE-TWO 600MCM-2
 TIGHTENING TORQUE 500 IN.-LB.

SYMBOL	TCI PART NUMBER
LR	KDRY42T
TR	KTR180C65HG
(20 KVAR) 9 PLACES.	KCAP20C6B
XFMR.	24389
Fu1,2,3	13232
Fu4,6	24390
Fu5	23977
CNT 2 PLACES.	19246
CNT 1 PLACE.	25315

NO	REVISION	DATE	BY	TOLERANCES EXCEPT AS NOTED: DECIMAL .XX ±.12 .XXX ±.06 FRACTIONAL ± 1/32 MILLAR ± 1/2"	DATE BY SCALE	DATE BY SCALE	DATE BY SCALE
					DSW	02/26/09	103705DG
					TO FIT		

TCI 7878 N. 86th STREET MILWAUKEE, WI 53224

HG600CW03STC, 600HP
 600/3/60 UL TYPE 3R

103705DG
 SHT.1 OF1