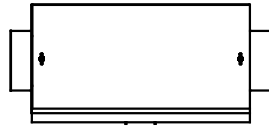
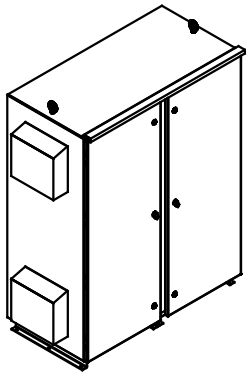


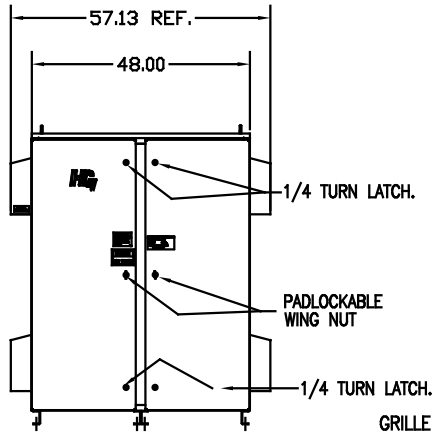
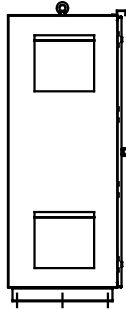
SEE DWG# 26753 FOR SCHEMATIC

CUSTOMER IS RESPONSIBLE FOR INSTALLATION
TO MEET ALL NATIONAL AND LOCAL ELECTRICAL CODES.

NOTE: USE ONLY HUBS OR FITTINGS THAT COMPLY
WITH UL514B FOR TYPE 3R ENCLOSURES.

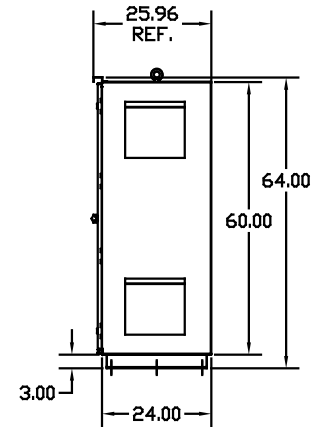
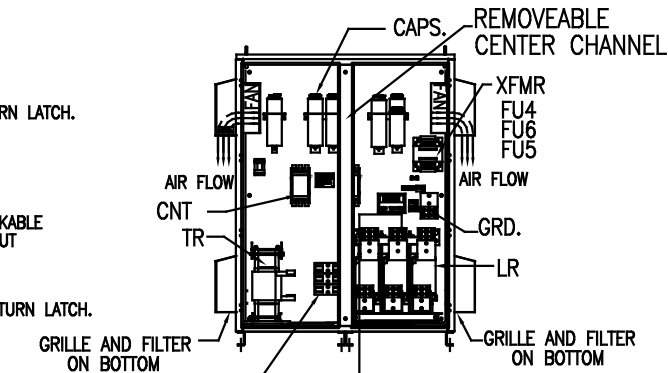


SIDE VIEW

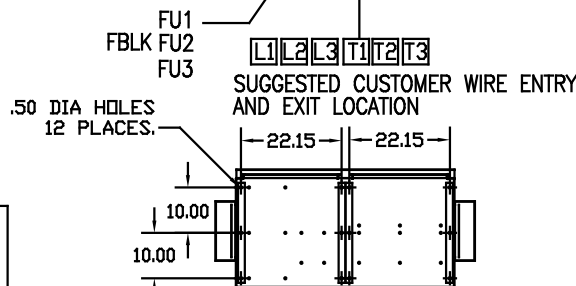


FRONT VIEW
WITH DOORS.

FRONT VIEW
WITHOUT DOORS



SIDE VIEW



BOTTOM VIEW

CUSTOMER CONNECTIONS:
WIRE RANGE—THREE 600MCM-2
TIGHTENING TORQUE 375 IN-LB.

GROUND LUG:
WIRE RANGE—THREE 600MCM-2
TIGHTENING TORQUE 375 IN-LB.

SYMBOL	TCI PART NUMBER
LR	KDRY1T
TR	KTR180A65HG
CAP.1-9 (20 KVAR)	KCAP20A6B
XFMR.	24113
Fu1,2,3	12596
Fu4,6	14106
Fu5	24110
CNT1, 2	23368
CNT3	23048

UNIT SPECIFICATIONS:

KVAR	HARMONIC	VOLT	HZ	PHASE	HP
180	5TH	480	60	3	600
ENCLOSURE		TYPE 3R- COLOR, WHITE			
FEATURES		CONTACTOR			
APPROX.WT. LBS	1244				

NO	REVISION	DATE	BY	TOLERANCES EXCEPT AS NOTED	7878 N. 86th STREET MILWAUKEE, WI 53224
				.XX ±.12 .XXX±.06 FRACTIONAL ± 1/32	
				SCALE TO FIT	HG600AW03STC, 600HP 480/3/60 UL TYPE 3R DATE BY: DSW DATE: 9/18/08 DRAWING NO: D 103685DG SHEET 1 OF 1