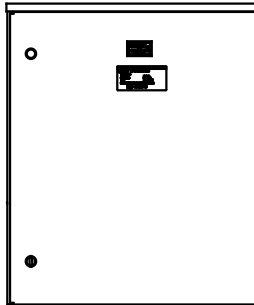
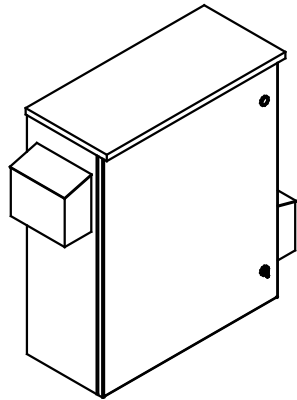


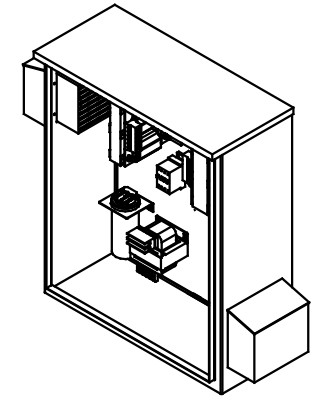
SEE DWG# 26752 FOR SCHEMATIC

CUSTOMER IS RESPONSIBLE FOR INSTALLATION TO MEET ALL NATIONAL AND LOCAL ELECTRICAL CODES.

NOTE: USE ONLY HUBS OR FITTINGS THAT COMPLY WITH UL514B FOR TYPE 3R ENCLOSURES.



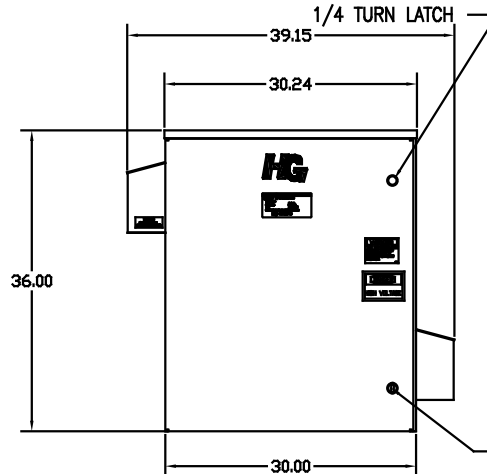
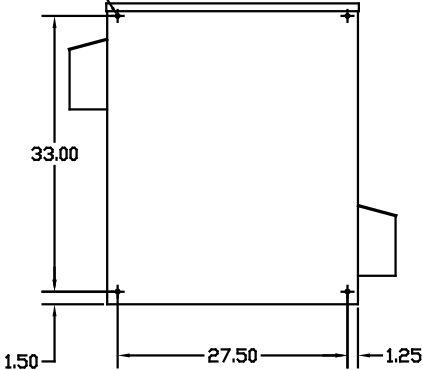
INSIDE DOOR



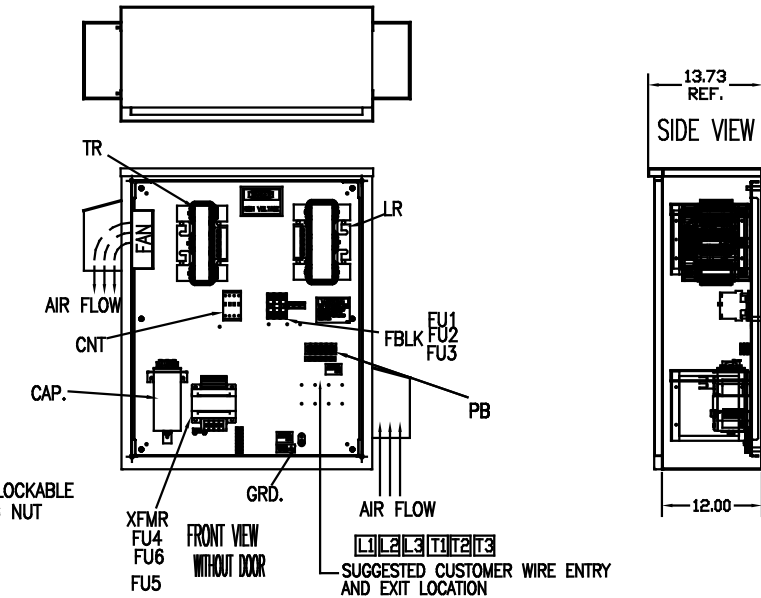
.44 DIA THRU HOLES  
4 PLACES ON BACK OF  
ENCLOSURE.

BACK VIEW

SIDE VIEW



OUTSIDE DOOR



FRONT VIEW WITHOUT DOOR



SIDE VIEW

UNIT SPECIFICATIONS:					
KVAR HARMONIC	VOLT	HZ	PHASE	HP	
15	5TH	480	60	3	50
ENCLOSURE	UL TYPE 3R				
COLOR	WHITE				
APPROX.WT. LBS.	231				

SYMBOL	TCI PART NUMBER
LR	KDRG1T
TR	KTR15A65HG
CAP (15 KVAR)	KCAP15A6B
XFMR.	23896
Fu1, 2, 3	11307
Fu4,6	24009
Fu5	17567
CNT	26550

**PB-POWER INPUT BLOCK:**  
 1 AWG thru 4 AWG 35 IN-LBS. MAX.  
 6 AWG thru 14 AWG 30 IN-LBS. MAX.  
 16 AWG thru 20 AWG 25 IN-LBS. MAX.  
 22 AWG 20 IN-LBS. MAX.

**GROUND LUG:**  
 WIRE RANGE-1/0 TO #14 AWG.  
 TIGHTENING TORQUE 200 IN-LB.

NO	REVISION	DATE	BY	TOLERANCES EXCEPT AS NOTED: DECIMAL XX ±.12 .XXX±.06 FRACTIONAL ± 1/32 ANGULAR ± 1/2°	DATE 08/25/08	SCALE TO FIT	REV. NO. C	DWG. NO. 103672DG

**TCI** 7878 N. 86th STREET  
MILWAUKEE, WI 53224

HG50AW03STC, 50HP  
480/3/60 UL TYPE 3R