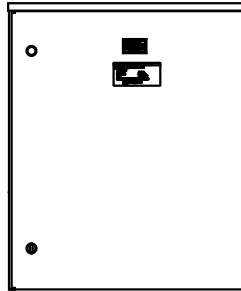
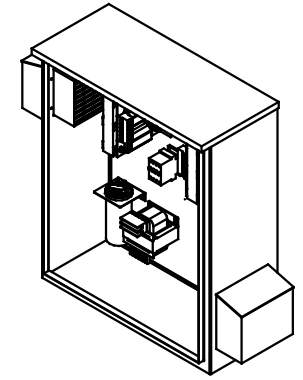
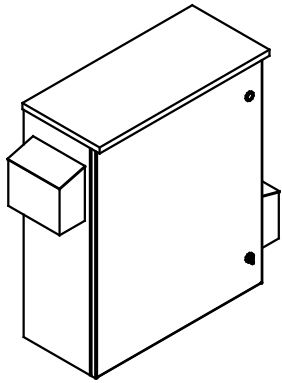


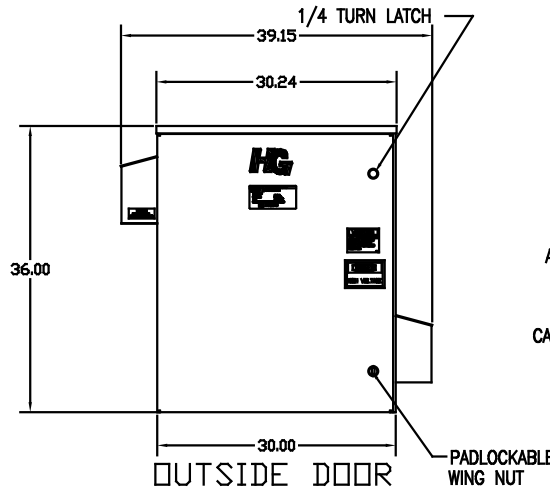
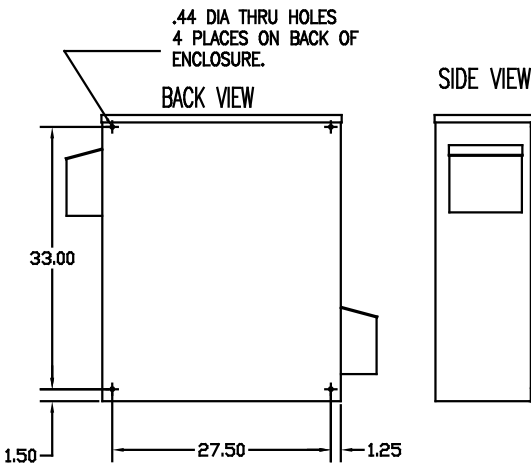
SEE DWG# 26752 FOR SCHEMATIC

CUSTOMER IS RESPONSIBLE FOR INSTALLATION
TO MEET ALL NATIONAL AND LOCAL ELECTRICAL CODES.

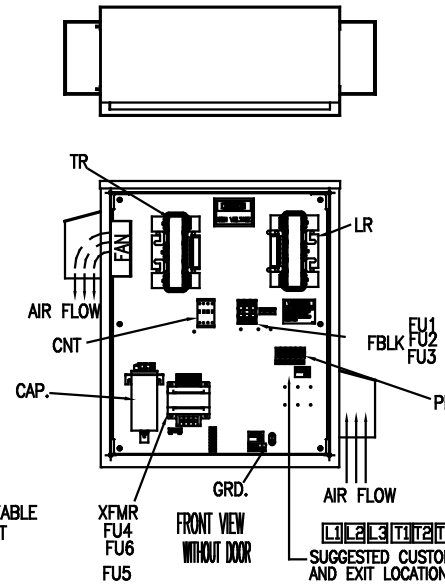
NOTE: USE ONLY HUBS OR FITTINGS THAT COMPLY
WITH UL514B FOR TYPE 3R ENCLOSURES.



INSIDE DOOR



OUTSIDE DOOR



FRONT VIEW
WITHOUT DOOR



SIDE VIEW

UNIT SPECIFICATIONS:					
KVAR HARMONIC	VOLT	HZ	PHASE	HP	
15	5TH	480	60	3	40
ENCLOSURE	UL TYPE 3R				
COLOR	WHITE				
APPROX.WT. LBS.	221				

SYMBOL	TCI PART NUMBER
LR	KDR11T
TR	KTR15A65HG
CAP (15 KVAR)	KCAP15A6B
XFMR.	23896
Fu1, 2, 3	11307
Fu4,6	24009
Fu5	17567
CNT	26550

PB-POWER INPUT BLOCK:
1 AWG thru 4 AWG 35 IN-LBS. MAX.
6 AWG thru 14 AWG 30 IN-LBS. MAX.
16 AWG thru 20 AWG 25 IN-LBS. MAX.
22 AWG 20 IN-LBS. MAX.

GROUND LUG:
WIRE RANGE-1/0 TO #14 AWG.
TIGHTENING TORQUE 200 IN-LB.

NO	REVISION	DATE	BY	TOLERANCES EXCEPT AS NOTED: DECIMAL XX ±.12 .XXX±.03 FRACTIONAL ± 1/32 ANGULAR ± 1/2°	SCALE TO FIT	DATE 08/25/08	APPROV. C	DWG. NO. 103671DG	SHT. 1 OF 1

TCI 7878 N. 86th STREET
MILWAUKEE, WI 53224

HG40AW03STC, 40HP
480/3/60 UL TYPE 3R