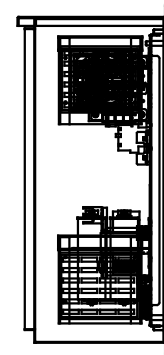
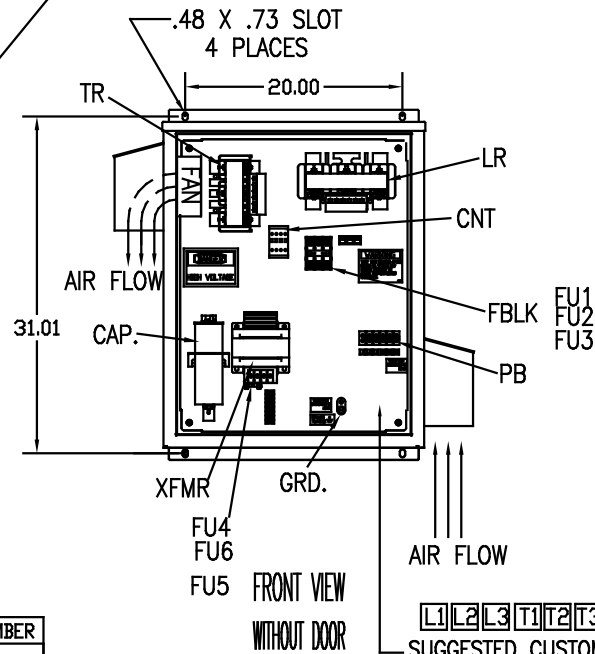
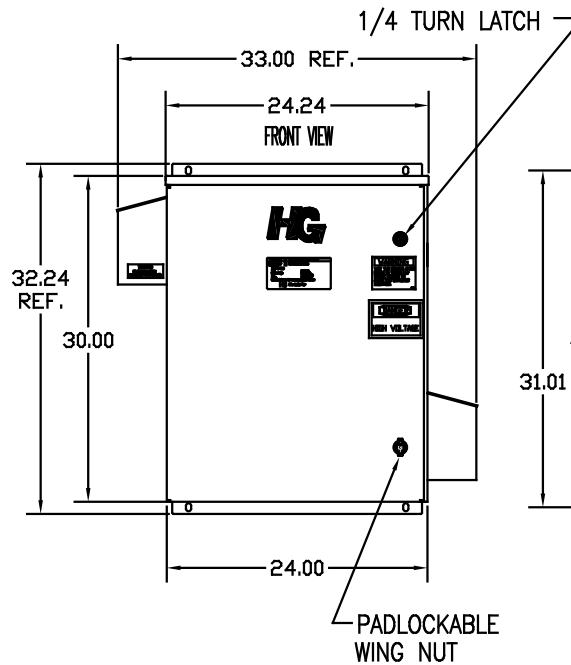
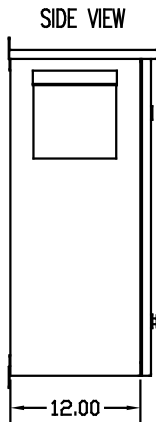
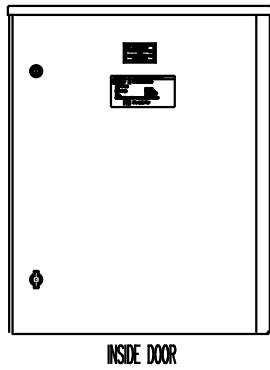
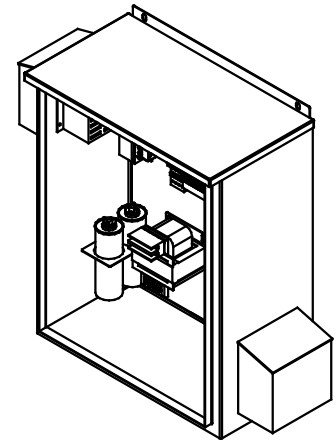
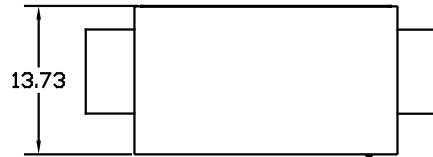
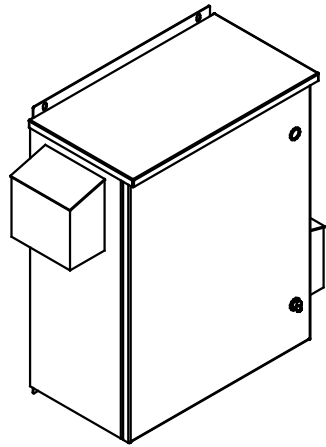


SEE DWG# 26752 FOR SCHEMATIC

CUSTOMER IS RESPONSIBLE FOR INSTALLATION TO MEET ALL NATIONAL AND LOCAL ELECTRICAL CODES.

NOTE: USE ONLY HUBS OR FITTINGS THAT COMPLY WITH UL514B FOR TYPE 3R ENCLOSURES.



UNIT SPECIFICATIONS:

KVAR HARMONIC	VOLT	HZ	PHASE	HP
8	5TH	480	60	3 25
ENCLOSURE	UL TYPE 3R.			
COLOR	WHITE			
APPROX.WT. LBS.	145			

SYMBOL	TCI PART NUMBER
LR	KDRF3T
TR	KTR8A65HG
CAP (3 KVAR)	KCAP3A6A
CAP (5 KVAR)	KCAP5A6AB
XFMR.	23896
Fu1, 2, 3	11306
Fu4,6	24009
Fu5	17567
CNT	26739

PB-POWER INPUT BLOCK:
WIRE RANGE-#18 TO #4 AWG.
TIGHTENING TORQUE 20 IN-LB.

GROUND LUG:
WIRE RANGE-1/0 TO #14 AWG.
TIGHTENING TORQUE 200 IN-LB.

NO	REVISION	DATE	BY	TOLERANCES EXCEPT AS NOTED: DIMEN. XX ±.12 .XXX±.06 FRACTIONAL ± 1/32 ANGULAR ± 1/2°	DATE	SCALE	APPROV.	DATE	SCALE	APPROV.

TCI 7878 N. 86th STREET
MILWAUKEE, WI 53224

HG25AW03STC, 25HP
480/3/60 UL TYPE 3R

DSW 08/25/08 103669DG
C