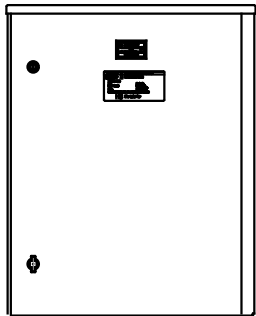
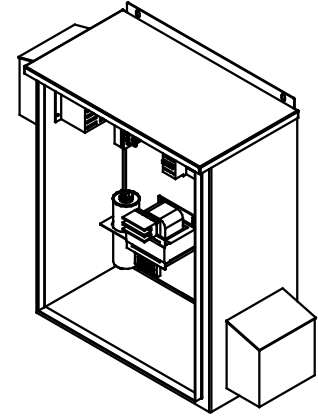
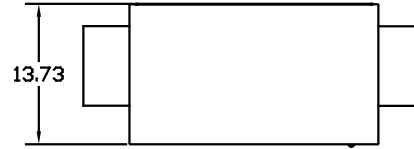
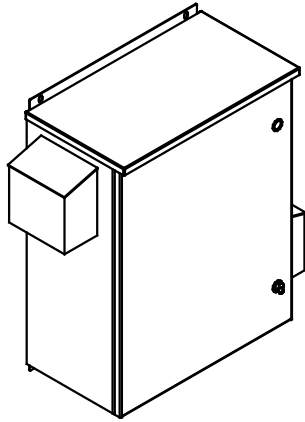


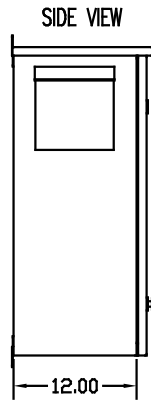
SEE DWG# 26752 FOR SCHEMATIC

CUSTOMER IS RESPONSIBLE FOR INSTALLATION
TO MEET ALL NATIONAL AND LOCAL ELECTRICAL CODES.

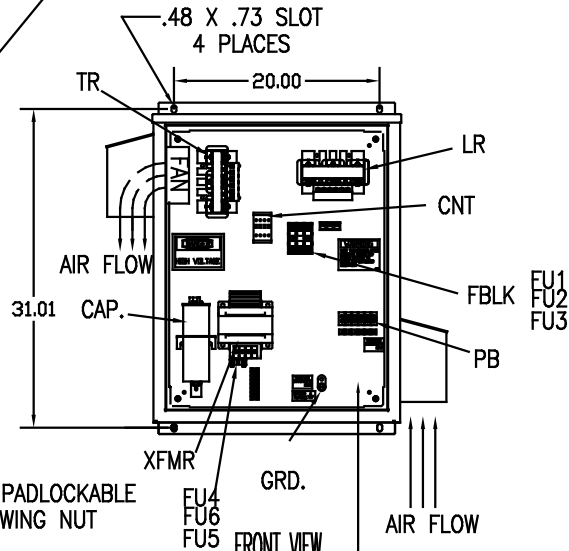
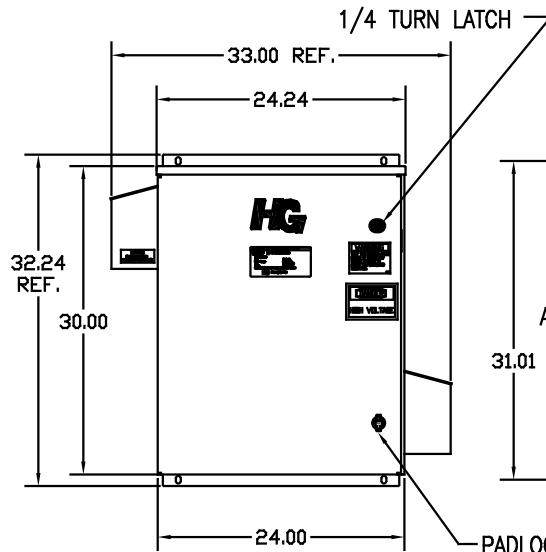
NOTE: USE ONLY HUBS OR FITTINGS THAT COMPLY
WITH UL514B FOR TYPE 3R ENCLOSURES.



INSIDE DOOR



SIDE VIEW



FRONT VIEW
WITHOUT DOOR

UNIT SPECIFICATIONS:					
KVAR	HARMONIC	VOLT	HZ	PHASE	HP
5	5TH	480	60	3	15
ENCLOSURE		UL TYPE 3R			
COLOR		WHITE			
APPROX.WT. LBS.		125			

SYMBOL	TCI PART NUMBER
LR	KDRF1T
TR	KTR5A65HG
CAP. (5 KVAR)	KCAP5A6A
XFMR.	23896
Fu1, 2, 3	15752
Fu4,6	24009
Fu5	17567
CNT	26739

PB-POWER INPUT BLOCK:
WIRE RANGE-#18 TO #4 AWG.
TIGHTENING TORQUE 20 IN.-LB.

GROUND LUG:
WIRE RANGE-1/0 TO #14 AWG.
TIGHTENING TORQUE 200 IN.-LB.

NO	REVISION	DATE	BY	TOLERANCES EXCEPT AS NOTED: DIMENSIONAL XX ±.12 .XXX±.06 FRACTIONAL ± 1/32 ANGULAR ± 1/2°	SCALE TO FIT	DATE 08/25/08	APPROVAL C	DWG. NO. 103667DG	SHT. 1 OF 1

7878 N. 86th STREET
MILWAUKEE, WI 53224

HG15AW03STC, 15HP
480/3/60 UL TYPE 3R