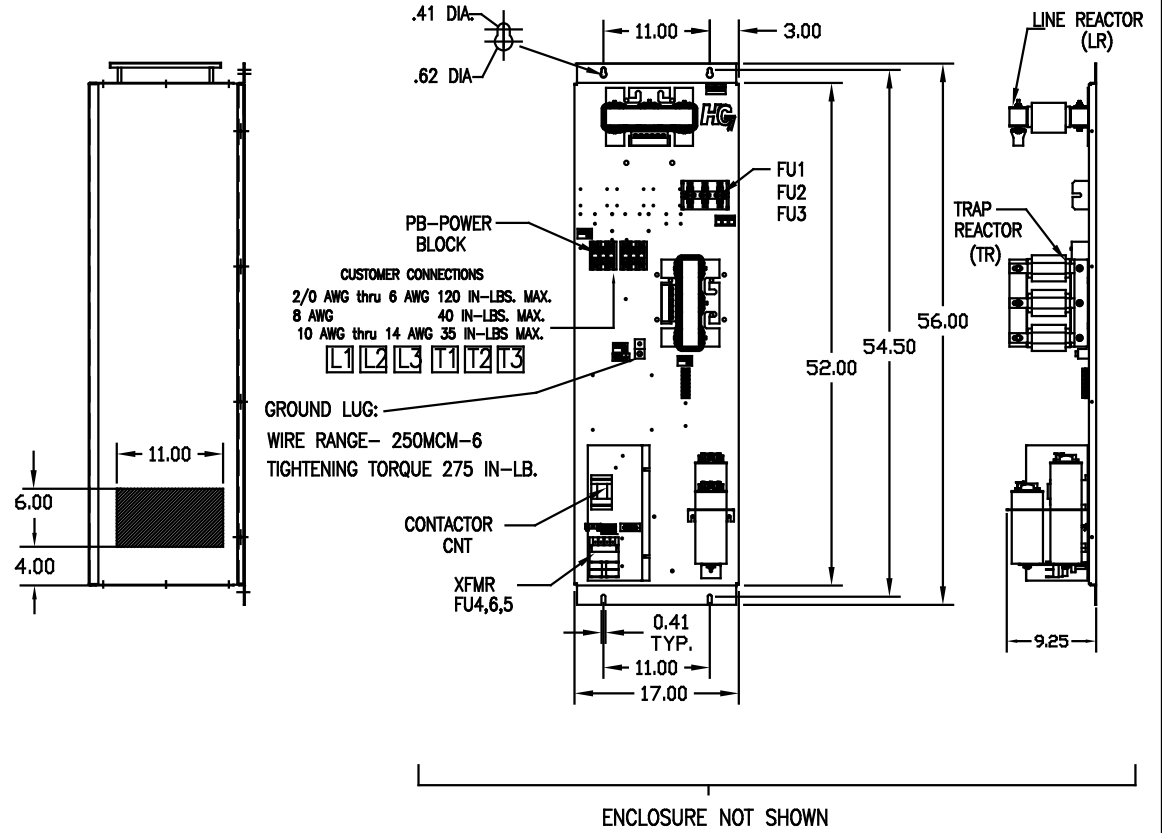
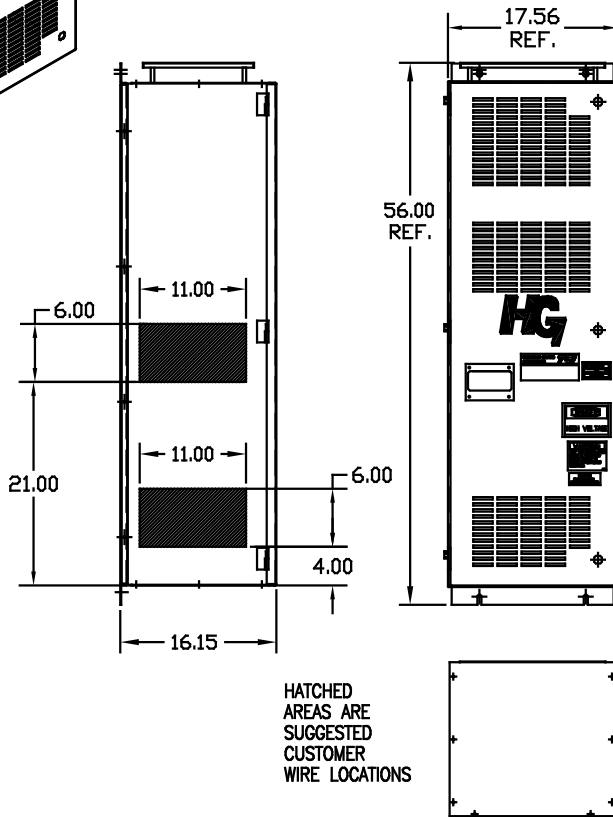
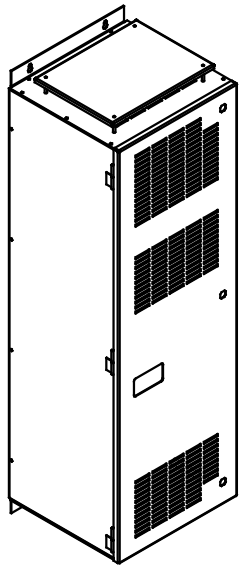


UNIT SPECIFICATIONS:					
KVAR	HARMONIC	VOLT	HZ	PHASE	HP
25	5TH	600	60	3	75
ENCLOSURE		NEMA 1- COLOR, BLACK			
OPTIONS		WITH CONTACTOR			
APPROX.WT. LBS.		263			

SYMBOL	TCI PART NUMBER
LR	KDRG43T
TR	KT25C65HGX1
CAP1	KCAP15C6B
CAP2	KCAP10C6B
XFMR.	24385
Fu1,2,3	12515
Fu4,6	13364
Fu5	24126
CNT	23048



CUSTOMER CONNECTIONS
 2/0 AWG thru 6 AWG 120 IN-LBS. MAX.
 8 AWG 40 IN-LBS. MAX.
 10 AWG thru 14 AWG 35 IN-LBS. MAX.

GROUND LUG:
 WIRE RANGE- 250MCM-6
 TIGHTENING TORQUE 275 IN-LB.

SEE DWG# 26878 FOR SCHEMATIC

CUSTOMER IS RESPONSIBLE FOR INSTALLATION TO MEET ALL NATIONAL AND LOCAL ELECTRICAL CODES.

				TOLERANCES EXCEPT AS NOTED:	7878 N. 86th STREET MILWAUKEE, WI 53224
				XX ±.03 .XXX±.01 FRACTIONAL ± 1/32 ANGULAR ± 1/2°	
				NO	HG75CW01STC 75HP 600/3/60, ENCLOSED, WITH CNT DATE BY DSW 11/12/08 DATE ING. REL. C 103553DG SCALE TO FIT APPROVAL
NO	REVISION	DATE	BY	± 1/2°	SHT. 1 OF 1