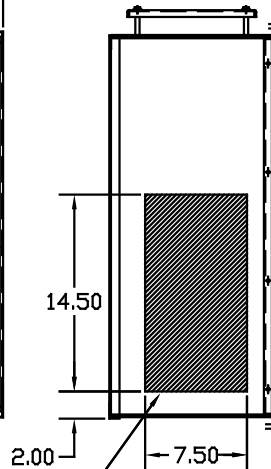
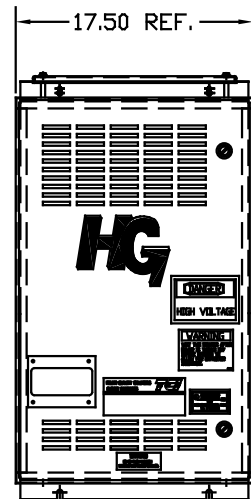
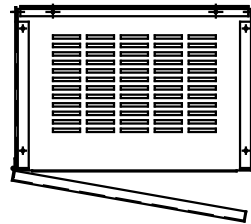
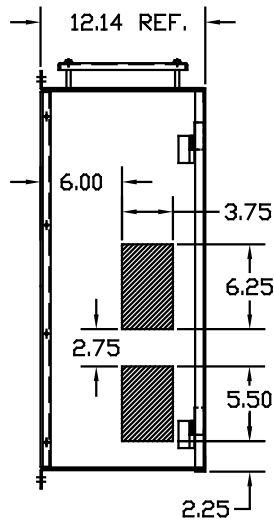
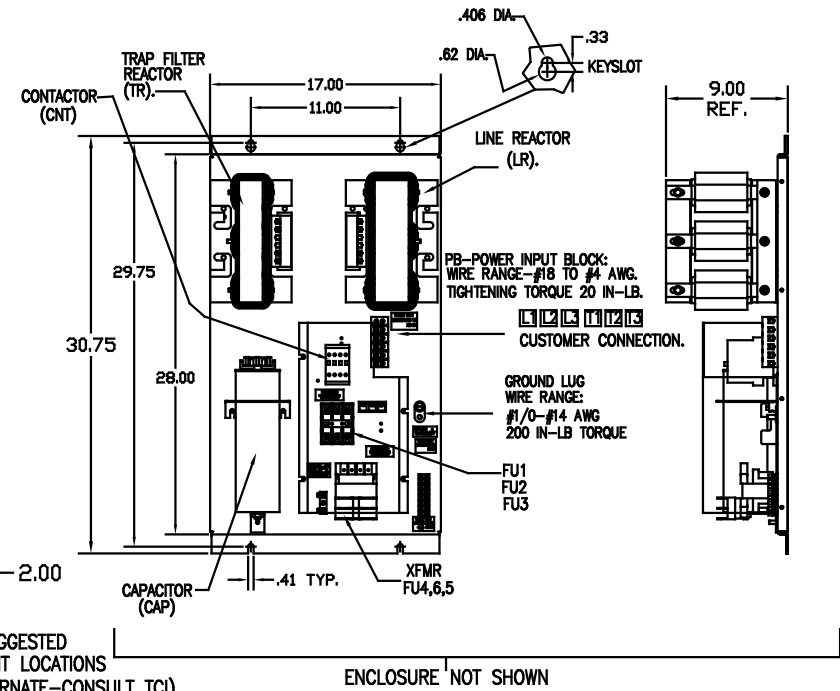


UNIT SPECIFICATIONS:					
KVAR	HARMONIC	VOLT	HZ	PHASE	HP
15	5TH	600	60	3	50
ENCLOSURE		WHITE OPEN PANEL			
OPTIONS		WITH CONTACTOR			
APPROX.WT. LBS.		190			

SYMBOL	TCI PART NUMBER
LR	KDRG41T
TR	KTR15C65HG
CAP	KCAP15C6B
XFMR.	24385
Fu1, 2, 3	11307
Fu4,6	13364
Fu5	24126
CNT	23021



HATCHED AREAS ARE SUGGESTED
CUSTOMER WIRE AND EXIT LOCATIONS
(BOTTOM ENTRANCE ALTERNATE-CONSULT TCI)



ENCLOSURE NOT SHOWN

SEE DWG# 26878 FOR SCHEMATIC

CUSTOMER IS RESPONSIBLE FOR INSTALLATION
TO MEET ALL NATIONAL AND LOCAL ELECTRICAL CODES.

				TOLERANCES EXCEPT AS NOTED: DECIMAL	7878 N. 86th STREET MILWAUKEE, WI 53224
				XX ±.03 .XXX ±.01	
				FRACTIONAL ± 1/32	HG50CW01STC 50HP
				ANGULAR ± 1/2°	600/3/60, ENCLOSED, WITH CNT
NO	REVISION	DATE	BY	SCALE TO FIT	DESIGNED BY DSW DATE 11/12/08 DRAWING NO. 103551DG SHEET 1 OF 1