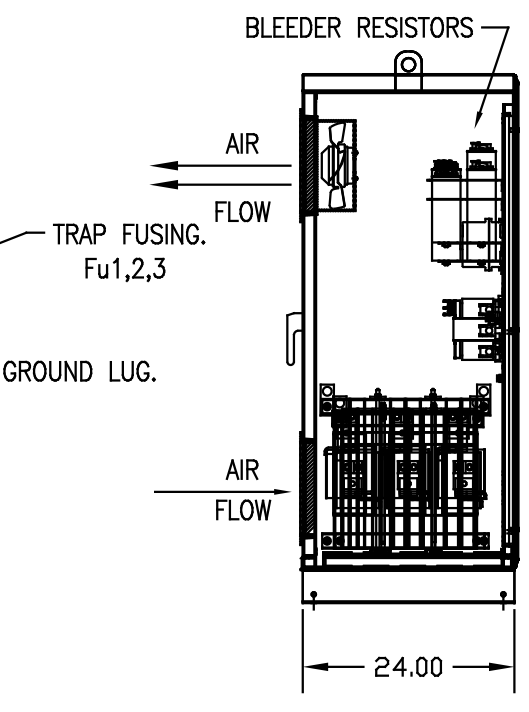
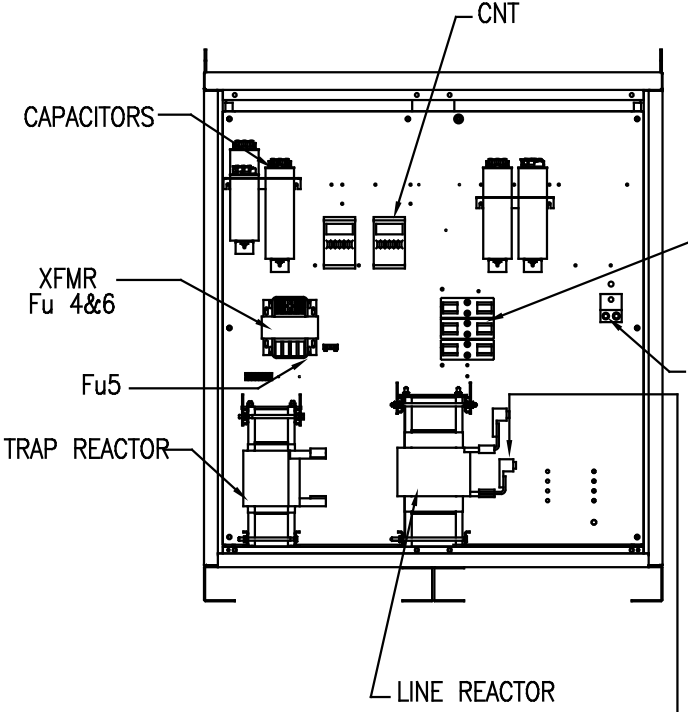
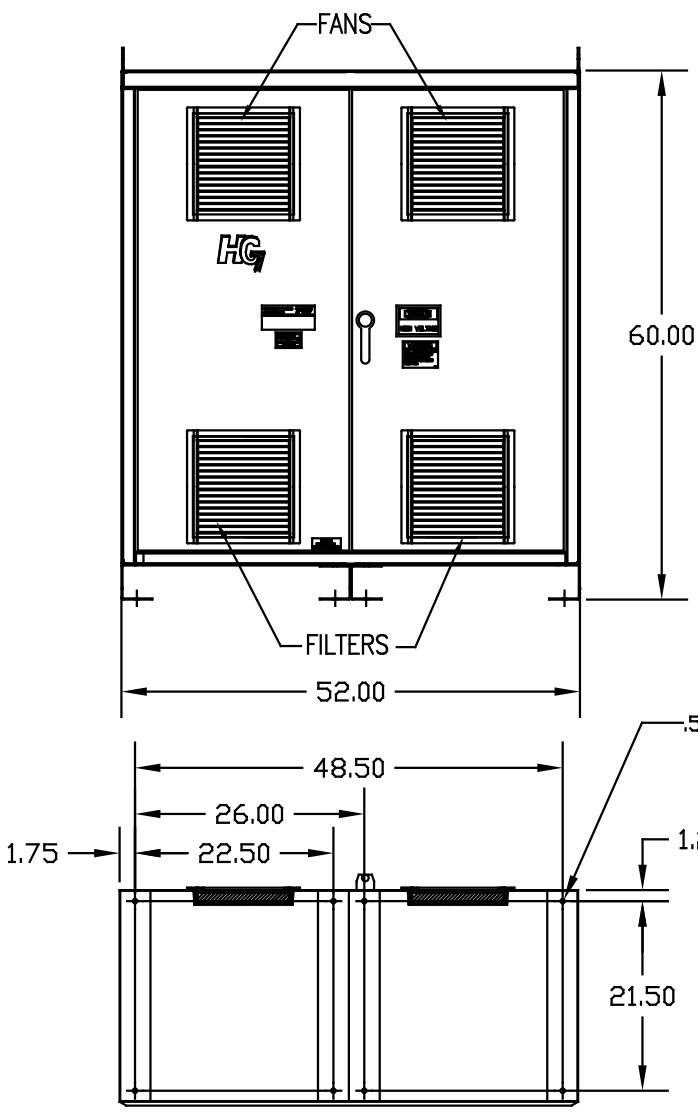


UNIT SPECIFICATIONS:						
KVAR	HARMONIC	VOLT	HZ	PHASE	HP	
150	5TH	600	60	3	500	
ENCLOSURE		NEMA 1- COLOR, BLACK				
FEATURES		WITH CONTACTOR				
APPROX.WT. LBS.		1310				

SYMBOL	TCI PART NUMBER
LR	KDRY41T
TR	KTR150C65HG
(20 KVAR) 7 PLACES.	KCAP20C6B
(10 KVAR) 1 PLACE.	KCAP10C6B
Fu1,2,3	12462
Fu4,6	24390
Fu5	23977
CNT	19246



CUSTOMER CONNECTIONS:  

L1	L2	L3
T1	T2	T3

SEE DWG# 26973-1 FOR SCHEMATIC

CUSTOMER IS RESPONSIBLE FOR INSTALLATION TO MEET ALL NATIONAL AND LOCAL ELECTRICAL CODES

CUSTOMER CONNECTIONS:  
 WIRE RANGE-TWO 600MCM-2  
 TIGHTENING TORQUE 500 IN-LB.

GROUND LUG:  
 WIRE RANGE-TWO 600MCM-2  
 TIGHTENING TORQUE 500 IN-LB.

NO	REVISION	DATE	BY	TOLERANCES EXCEPT AS NOTED: DIMEN. XX ±.03 .XXX ±.01 FRACTIONAL ± 1/32 ANGULAR ± 1/2°	DATE	SCALE	APPROVAL	DATE	SCALE	APPROVAL	DATE	SCALE	APPROVAL

**TCI** 7878 N. 86th STREET  
MILWAUKEE, WI 53224

HG500CW01STC, HG7  
500 HP, 600/3/60, TYPE 1

DATE BY DSW 03/19/09 DATE BY DSW 03/19/09 DATE BY DSW 03/19/09  
 SCALE TO FIT SCALE TO FIT SCALE TO FIT  
 103563DG  
 SHI.1 OF 1