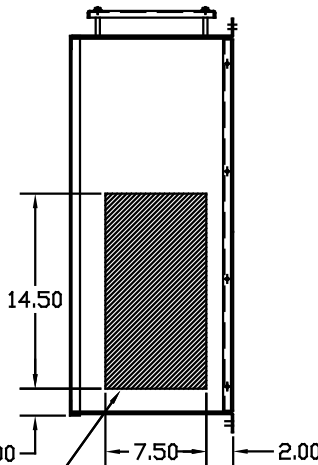
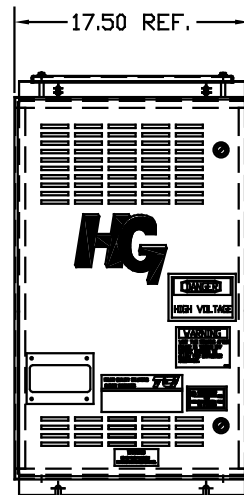
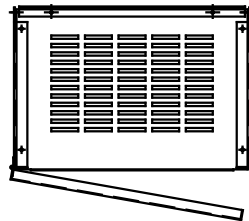
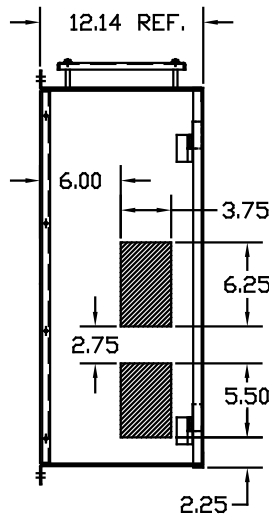
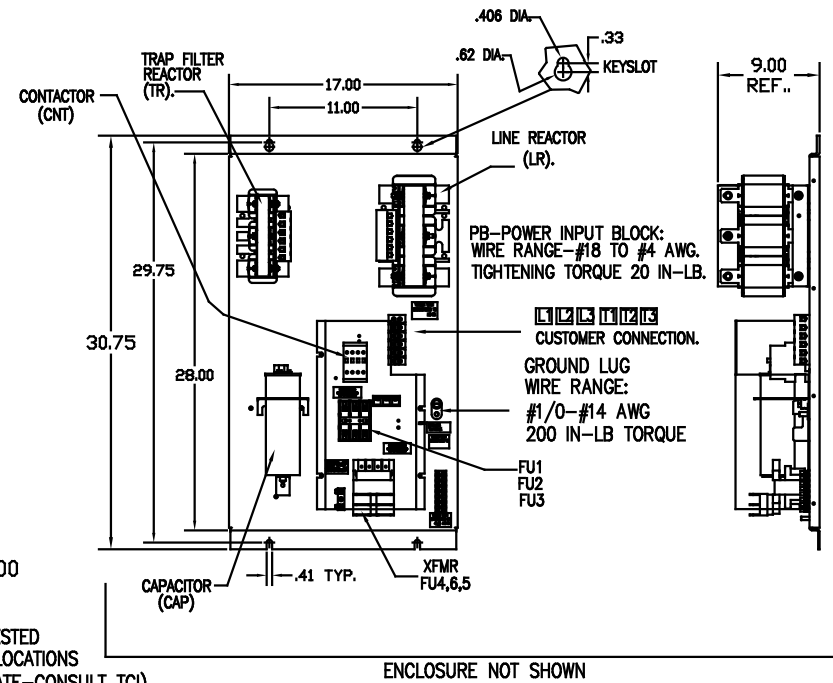


UNIT SPECIFICATIONS:					
KVAR HARMONIC	VOLT	HZ	PHASE	HP	
5	5TH	600	60	3	15
ENCLOSURE	NEMA 1- COLOR, BLACK				
OPTIONS	WITH CONTACTOR				
APPROX.WT. LBS.	115				

SYMBOL	TCI PART NUMBER
LR	KDRF41T
TR	KTR5C65HG
CAP	KCAP5C6A
XFMR.	24385
Fu1, 2, 3	11262
Fu4,6	13364
Fu5	24126
CNT	12434



HATCHED AREAS ARE SUGGESTED  
CUSTOMER WIRE AND EXIT LOCATIONS  
(BOTTOM ENTRANCE ALTERNATE-CONSULT TCI)



ENCLOSURE NOT SHOWN

SEE DWG# 26878 FOR SCHEMATIC

CUSTOMER IS RESPONSIBLE FOR INSTALLATION  
TO MEET ALL NATIONAL AND LOCAL ELECTRICAL CODES.

NO	REVISION	DATE	BY	TOLERANCES EXCEPT AS NOTED: DECIMAL XX ±.03 .XXX±.01 FRACTIONAL ± 1/32 ANGULAR ± 1/2°	SCALE TO FIT	DATE 11/12/08	APPROVAL C	DWG. NO. 103548DG	SHEET 1 OF 1

TCI 7878 N. 86th STREET  
MILWAUKEE, WI 53224

HG15CW01STC 15HP

600/3/60, ENCLOSED, WITH CNT

DESIGNED BY DSW DATE 11/12/08 DRAWING NO. 103548DG