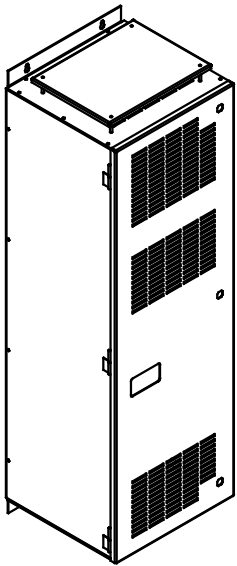
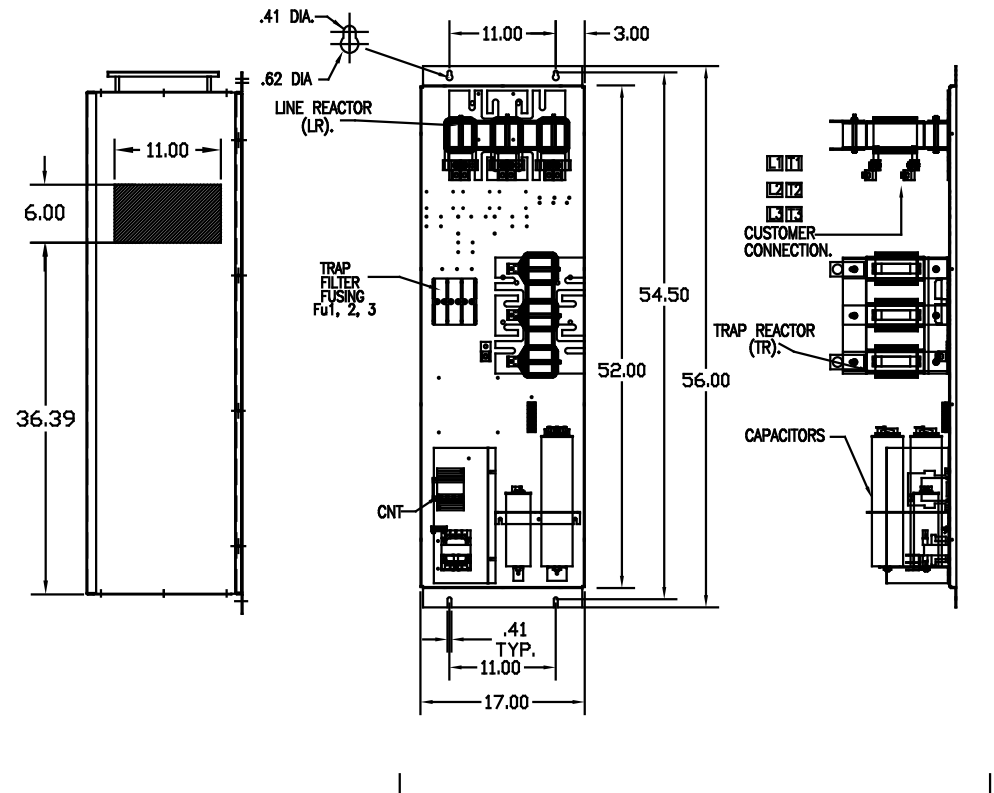
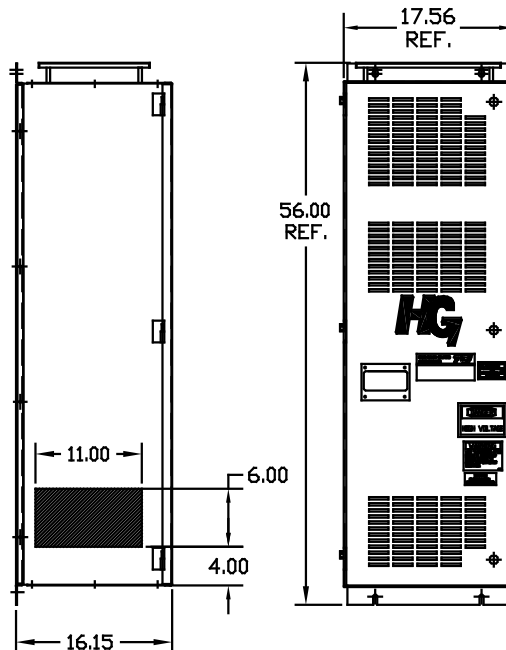


SEE DWG# 26879 FOR SCHEMATIC



CUSTOMER CONNECTIONS
 WIRE RANGE- 250MCM-6
 TIGHTENING TORQUE 275 IN-LB.

GROUND LUG:
 WIRE RANGE- 250MCM-6
 TIGHTENING TORQUE 275 IN-LB.



HATCHED
 AREAS ARE
 SUGGESTED
 CUSTOMER
 WIRE LOCATIONS

UNIT SPECIFICATIONS:				
KVAR HARMONIC	VOLT	HZ	PHASE	HP
45	5TH	600	60	3 150
ENCLOSURE	NEMA 1- COLOR, BLACK			
FEATURES	WITH CONTACTOR			
APPROX.WT. LBS.	360			

SYMBOL	TCI PART NUMBER
LR	KDRL42T
TR	KTR45C65HG
CAP1 5.0 KVAR	KCAP5C6A
CAP2, CAP3. 20 KVAR	KCAP20C6B
Fu1a,2a,3a	15740
Fu4,6	24126
Fu5	13364
CNT	22980

CUSTOMER IS RESPONSIBLE FOR INSTALLATION
 TO MEET ALL NATIONAL AND LOCAL ELECTRICAL CODES.

NO	REVISION	DATE	BY	TOLERANCES EXCEPT AS NOTED	SCALE	DATE	APPROV	DWG. NO.	SHT. 1 OF 1
				DECIMAL XX ±.03 .XXX ±.01 FRACTIONAL ± 1/32 ANGULAR ± 1/2°	TO FIT	3/18/09	DSW	103556dg	

TCI 7878 N. 86th STREET
 MILWAUKEE, WI 53224

HG150CW01STC, 150HP
 600/3/60, ENCL, WITH CNT