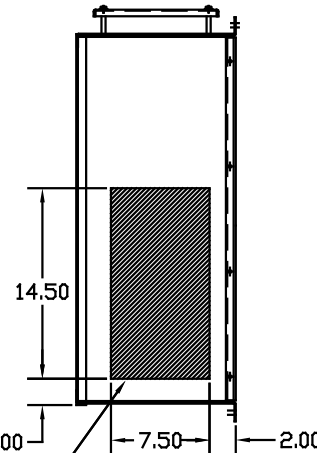
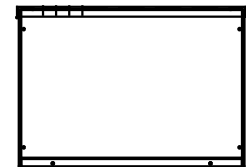
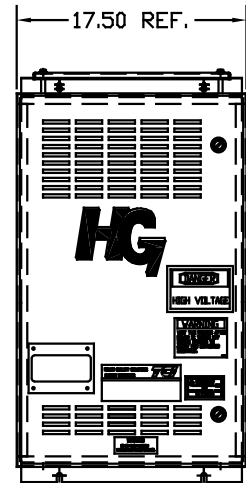
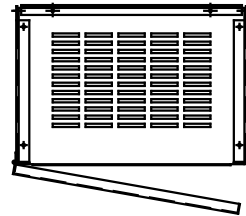
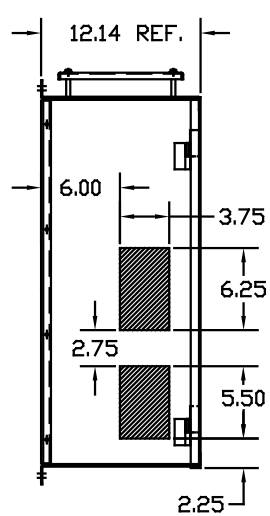
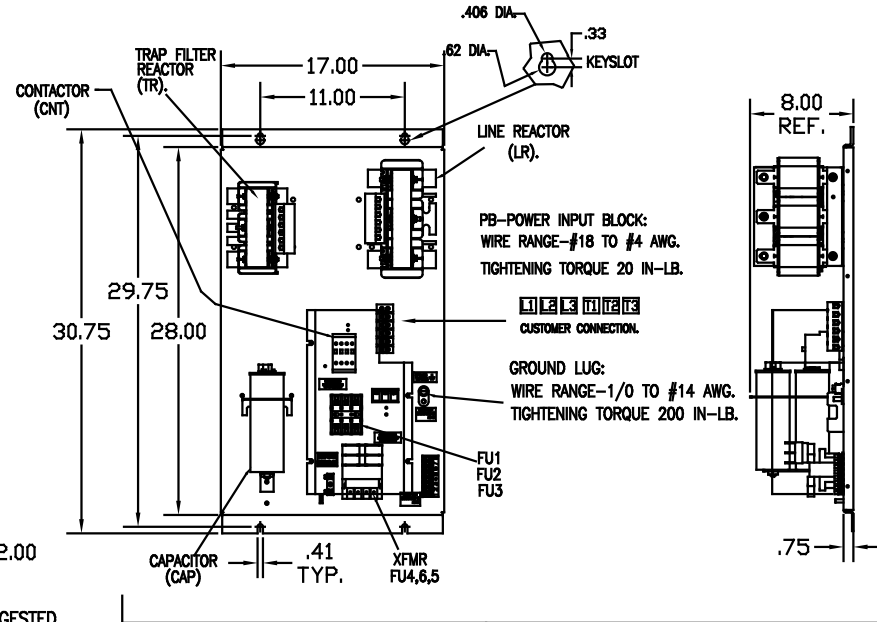


UNIT SPECIFICATIONS:					
KVAR HARMONIC	VOLT	HZ	PHASE	HP	
8	5TH	480	60	3	25
ENCLOSURE	NEMA 1- COLOR, BLACK				
APPROX.WT. LBS.	105				

SYMBOL	TCI PART NUMBER
LR	KDRF3T
TR	KTR8A65HG
CAP (3 KVAR)	KCAP3A6A
CAP (5 KVAR)	KCAP5A6AB
XFMR.	23891
Fu1, 2, 3	11306
Fu4,6	21270
Fu5	13364
CNT	12434



HATCHED AREAS ARE SUGGESTED CUSTOMER WIRE AND EXIT LOCATIONS (BOTTOM ENTRANCE ALTERNATE-CONSULT TCI)



ENCLOSURE NOT SHOWN

SEE DWG# 26689 FOR SCHEMATIC

CUSTOMER IS RESPONSIBLE FOR INSTALLATION TO MEET ALL NATIONAL AND LOCAL ELECTRICAL CODES.

				TOLERANCES EXCEPT AS NOTED:	7878 N. 86th STREET MILWAUKEE, WI 53224
				DECIMAL	
				.XX ± .03	HG25AW01STC 25 HP 480/3/60, ENCLOSED, WITH CNT DWG. NO. 103504DG DATE 7/7/08 SCALE TO FIT
				.XXX ± .01	
				FRACTIONAL ± 1/32	
				ANGULAR ± 1/2°	
NO	REVISION	DATE	BY	APPROV.	DSW DATE 7/7/08 DATE 7/7/08 DATE 7/7/08