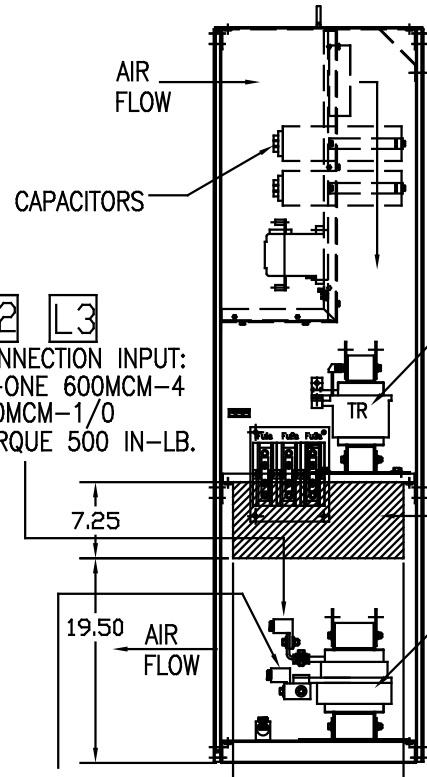
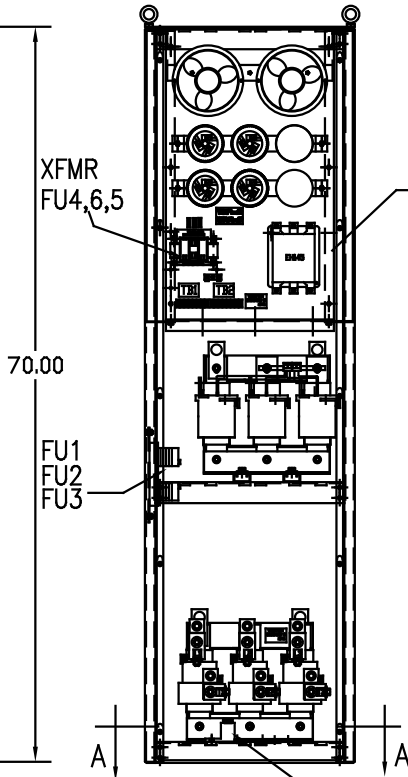
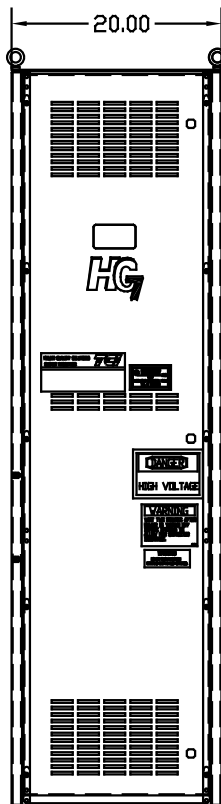
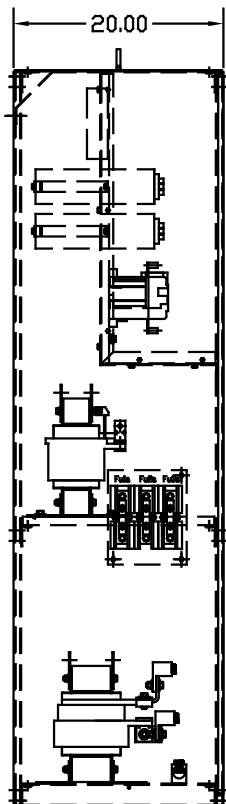
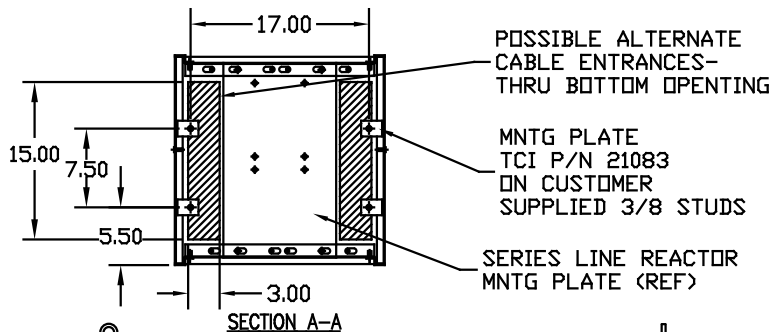
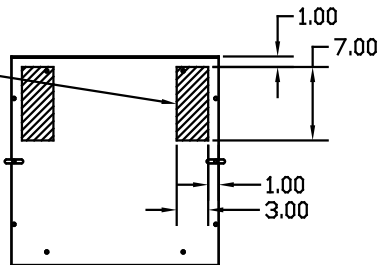


POSSIBLE ALTERNATE
CABLE ENTRANCES-
REQUIRES MODIFICATION
OF AIR FLOW DEFLECTOR



L1 L2 L3
CUSTOMER CONNECTION INPUT:
WIRE RANGE-ONE 600MCM-4
TWO 250MCM-1/0
TIGHTENING TORQUE 500 IN-LB.

T1 T2 T3
CUSTOMER CONNECTION OUTPUT:
WIRE RANGE-ONE 600MCM-4
TWO 250MCM-1/0
TIGHTENING TORQUE 500 IN-LB.

GROUND LUG:
WIRE RANGE-ONE 600MCM-4
TWO 250MCM-1/0
TIGHTENING TORQUE 500 IN-LB.

FOR SCHEMATIC SEE DWG# 26690-1

CUSTOMER IS RESPONSIBLE FOR INSTALLATION
TO MEET ALL NATIONAL AND LOCAL ELECTRICAL CODES.

SYMBOL	TCI PART NUMBER
LR	KDRS2T
TR	KTR75A65HG
CAP.1, CAP2, CAP3 (20 KVAR)	KCAP20A6B
CAP.4 (5 KVAR)	KCAP5A6A
XFMR.	23894
Fu1,2,3	13333
Fu4,6	13203
Fu5	13362
CNT	23368

NO	REVISION	DATE	BY	TOLERANCES EXCEPT AS NOTED	DESIGN
				XX ±.03	
				.XXX±.01	
				FRACTIONAL ± 1/32	
				ANGULAR ± 1/2°	
				SCALE TO FIT	

TCI 7878 N. 86th STREET
MILWAUKEE, WI 53224

HG250AW01STC, HG7, 250HP
480/3/60, W/CONTACTOR

DATE 08/04/08
DRAWN BY DSW
SCALE TO FIT
DWG. NO. 103514DG
SHEET 1 OF 1

UNIT SPECIFICATIONS:

KVAR	HARMONIC	VOLT	HZ	PHASE	HP
75	5TH	480	60	3	250
ENCLOSURE		NEMA 1- COLOR, BLACK			
FEATURES		W/CONTACTOR			
APPROX.WT. LBS.		530			