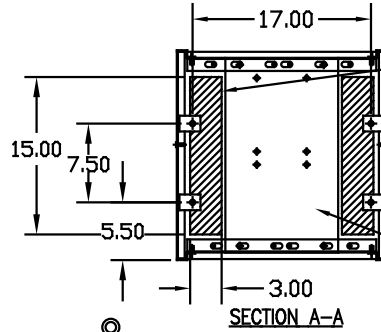
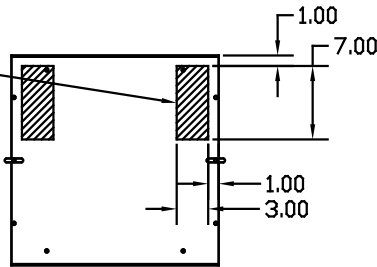


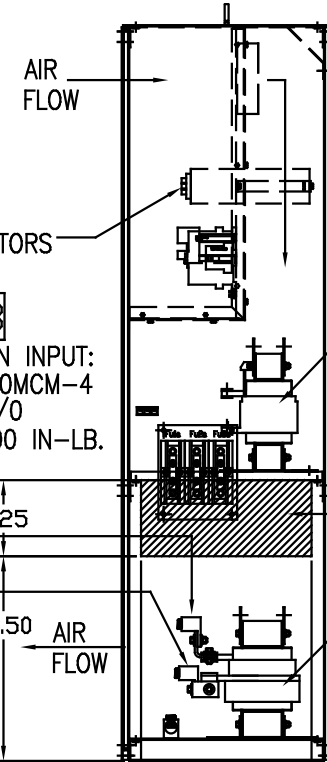
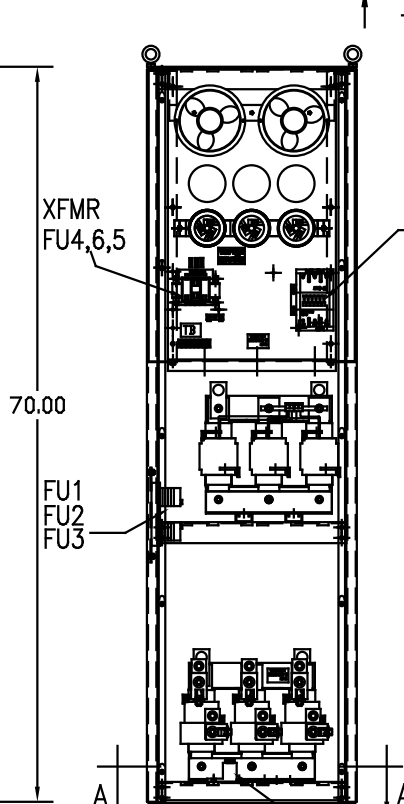
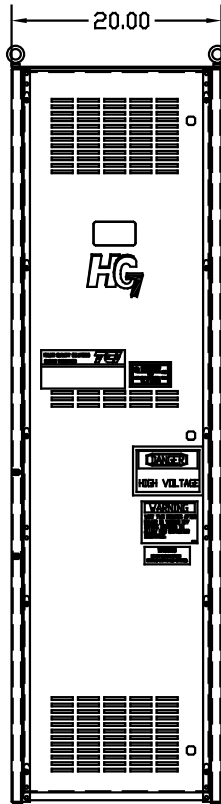
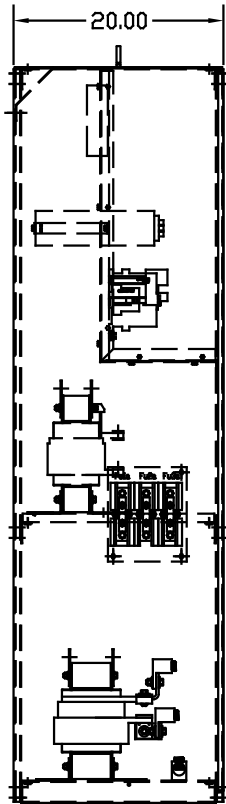
POSSIBLE ALTERNATE
CABLE ENTRANCES-
REQUIRES MODIFICATION
OF AIR FLOW DEFLECTOR



POSSIBLE ALTERNATE
CABLE ENTRANCES-
THRU BOTTOM OPENING

MNTG PLATE
TCI P/N 21083
ON CUSTOMER
SUPPLIED 3/8 STUDS

SERIES LINE REACTOR
MNTG PLATE (REF)



L1 L2 L3
CUSTOMER CONNECTION INPUT:
WIRE RANGE-ONE 600MCM-4
TWO 250MCM-1/0
TIGHTENING TORQUE 500 IN-LB.

CUSTOMER CONNECTION OUTPUT:
WIRE RANGE-ONE 600MCM-4
TWO 250MCM-1/0
TIGHTENING TORQUE 500 IN-LB.

T1 T2 T3

GROUND LUG:
WIRE RANGE-ONE 600MCM-4
TWO 250MCM-1/0
TIGHTENING TORQUE 500 IN-LB.

TRAP REACTOR (TR)
SUGGESTED LOCATION
FOR CUSTOMERS INPUT
OPPOSITE SIDE ALSO
AVAILABLE BY MOVING
FUSES AND TR TO
EXISTING MOUNTING
STUDS-CONSULT FACTORY

LINE REACTOR (LR)

16.25
CENTRALIZED

FOR SCHEMATIC SEE DWG# 26690-1

CUSTOMER IS RESPONSIBLE FOR INSTALLATION
TO MEET ALL NATIONAL AND LOCAL ELECTRICAL CODES.

UNIT SPECIFICATIONS:

KVAR	HARMONIC	VOLT	HZ	PHASE	HP
60	5TH	480	60	3	200
ENCLOSURE		NEMA 1- COLOR, BLACK			
FEATURES		CONTACTOR			
APPROX.WT. LBS.		500			

SYMBOL	TCI PART NUMBER
LR	KDRS1T
TR	KTR60A65HG
CAP1, CAP2, CAP3 (20 KVAR)	KCAP20A6B
XFMR.	23894
Fu1,2,3	11305
Fu4,6	13203
Fu5	13362
CNT	19246

NO	REVISION	DATE	BY	TOLERANCES UNLESS AS NOTED	DESIGN
				XX ±.03	
				.XXX±.01	
				FRACTIONAL ± 1/32	
				ANGULAR ± 1/2°	
				SCALE TO FIT	

TCI 7878 N. 86th STREET
MILWAUKEE, WI 53224

HG200AW01STC, HG7, 200HP
480/3/60, W/CONTACTOR

DATE 08/04/08
DRAWN BY DSW
SCALE TO FIT
103513DG
SHT. 1 OF 1