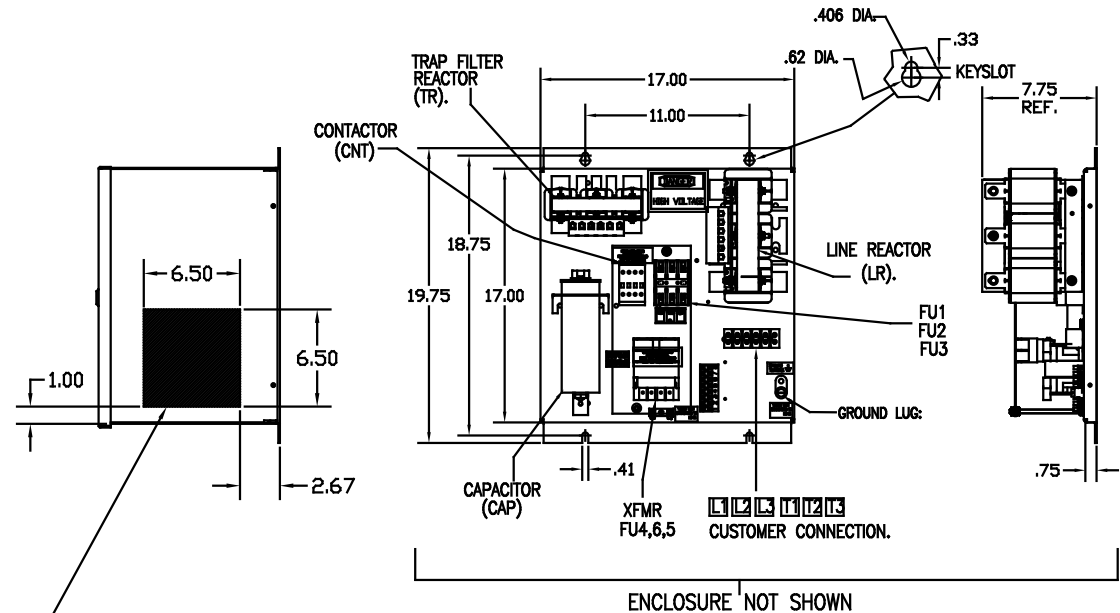
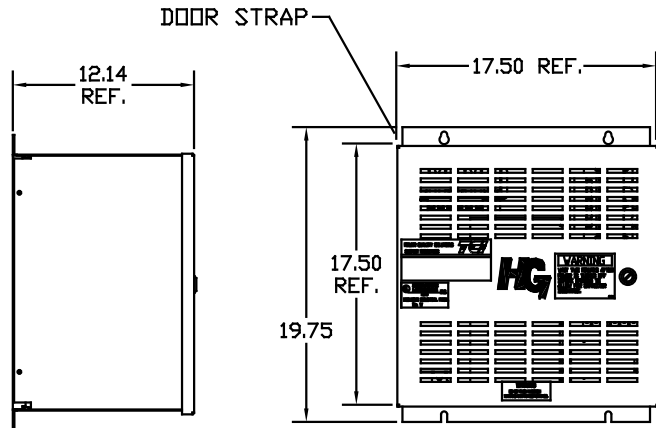


UNIT SPECIFICATIONS:					
KVAR	HARMONIC	VOLT	HZ	PHASE	HP
5	5TH	480	60	3	15
ENCLOSURE		NEMA 1- COLOR, BLACK			
APPROX.WT. LBS.		80			

SYMBOL	TCI PART NUMBER
LR	KDRF1T
TR	KTR5A65HG
CAP. (5 KVAR)	KCAP5A6A
XFMR.	23891
Fu1, 2, 3	11262
Fu4,6	21270
Fu5	13364
CNT	12434

SEE DWG# 26689 FOR SCHEMATIC




HATCHED AREAS ARE SUGGESTED
CUSTOMER WIRE AND EXIT LOCATIONS
(BOTTOM ENTRANCE ALTERNATE-CONSULT TCI)

PB-POWER INPUT BLOCK:
WIRE RANGE-#18 TO #4 AWG.
TIGHTENING TORQUE 20 IN-LB.

GROUND LUG:
WIRE RANGE-1/0 TO #14 AWG.
TIGHTENING TORQUE 200 IN-LB.

CUSTOMER IS RESPONSIBLE FOR INSTALLATION
TO MEET ALL NATIONAL AND LOCAL ELECTRICAL CODES.

TOLERANCES EXCEPT AS NOTED				 7878 N. 86th STREET MILWAUKEE, WI 53224
DECIMAL	FRACTIONAL	ANGULAR	SCALE	
XX ± .03				HG15AW01STC 15 HP 480/3/60, ENCLOSED, WITH CNT
.XXX ± .01				
	± 1/32			DESIGNED BY DSW DATE 7/3/08 DRAWING NO. 103502DG SCALE TO FIT SHEET 1 OF 1
	± 1/2°			
NO	REVISION	DATE	BY	