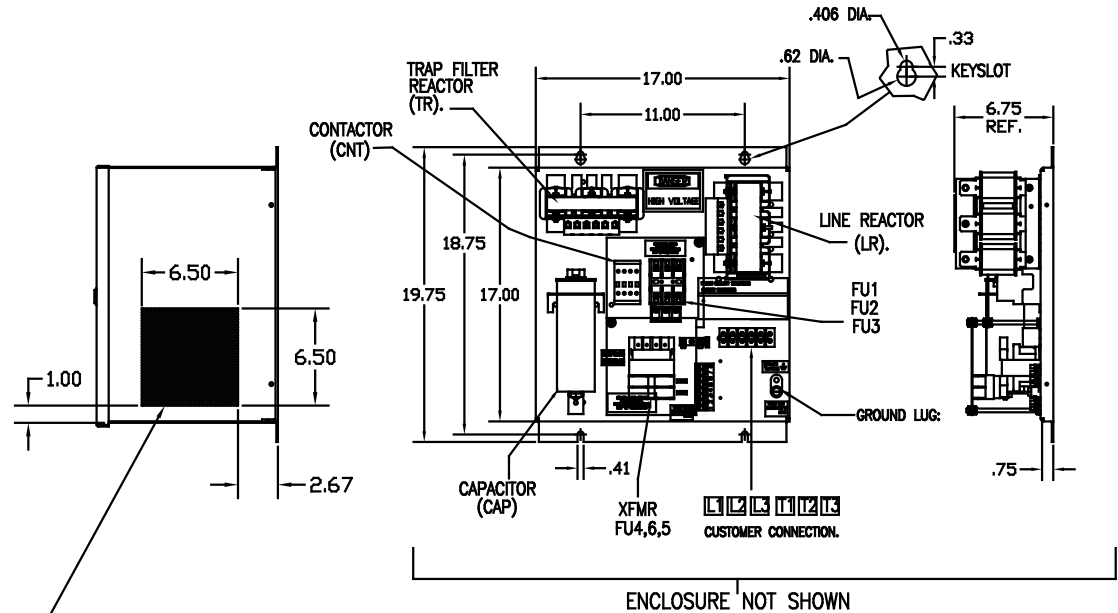
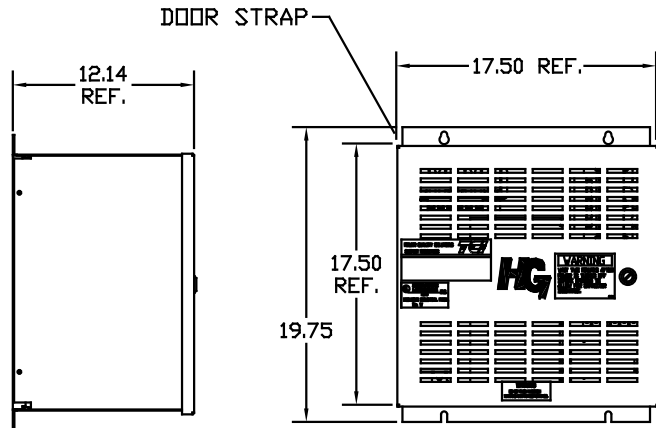


UNIT SPECIFICATIONS:					
KVAR	HARMONIC	VOLT	HZ	PHASE	HP
3	5TH	480	60	3	10
ENCLOSURE		NEMA 1- COLOR, BLACK			
APPROX.WT. LBS.		70			

SYMBOL	TCI PART NUMBER
LR	KDRE1T
TR	KTR3A65HG
CAP. (3 KVAR)	KCAP3A6A
XFMR.	23891
Fu1, 2, 3	11262
Fu4,6	21270
Fu5	13364
CNT	12434

SEE DWG# 26689 FOR SCHEMATIC



HATCHED AREAS ARE SUGGESTED
CUSTOMER WIRE AND EXIT LOCATIONS
(BOTTOM ENTRANCE ALTERNATE-CONSULT TCI)

PB-POWER INPUT BLOCK:
WIRE RANGE-#18 TO #4 AWG.
TIGHTENING TORQUE 20 IN-LB.

GROUND LUG:
WIRE RANGE-1/0 TO #14 AWG.
TIGHTENING TORQUE 200 IN-LB.

CUSTOMER IS RESPONSIBLE FOR INSTALLATION
TO MEET ALL NATIONAL AND LOCAL ELECTRICAL CODES.

NO	REVISION	DATE	BY	TOLERANCES EXCEPT AS NOTED	SCALE	DATE	APPROV	DATE	SCALE	APPROV
				DECIMAL XX ± .03 .XXX ± .01	TO FIT	7/3/08				
				FRACTIONAL ± 1/32						
				ANGULAR ± 1/2°						

7878 N. 86th STREET
MILWAUKEE, WI 53224

HG10AW01STC 10 HP
480/3/60, ENCLOSED, WITH CNT

NO. 103501DG
SHT. 1 OF 1