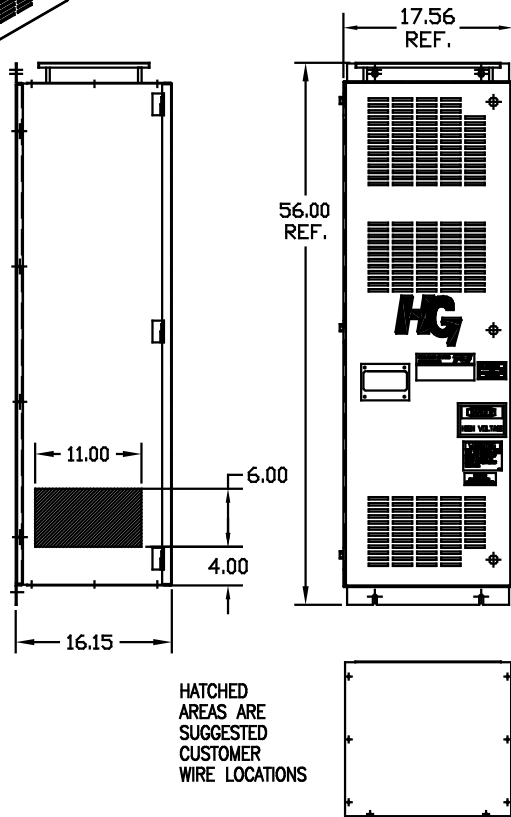
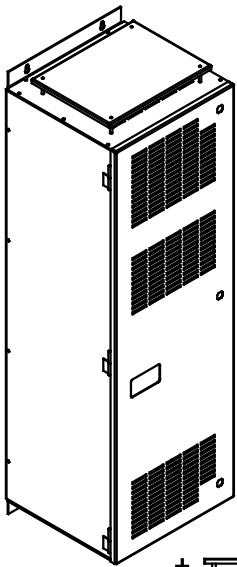
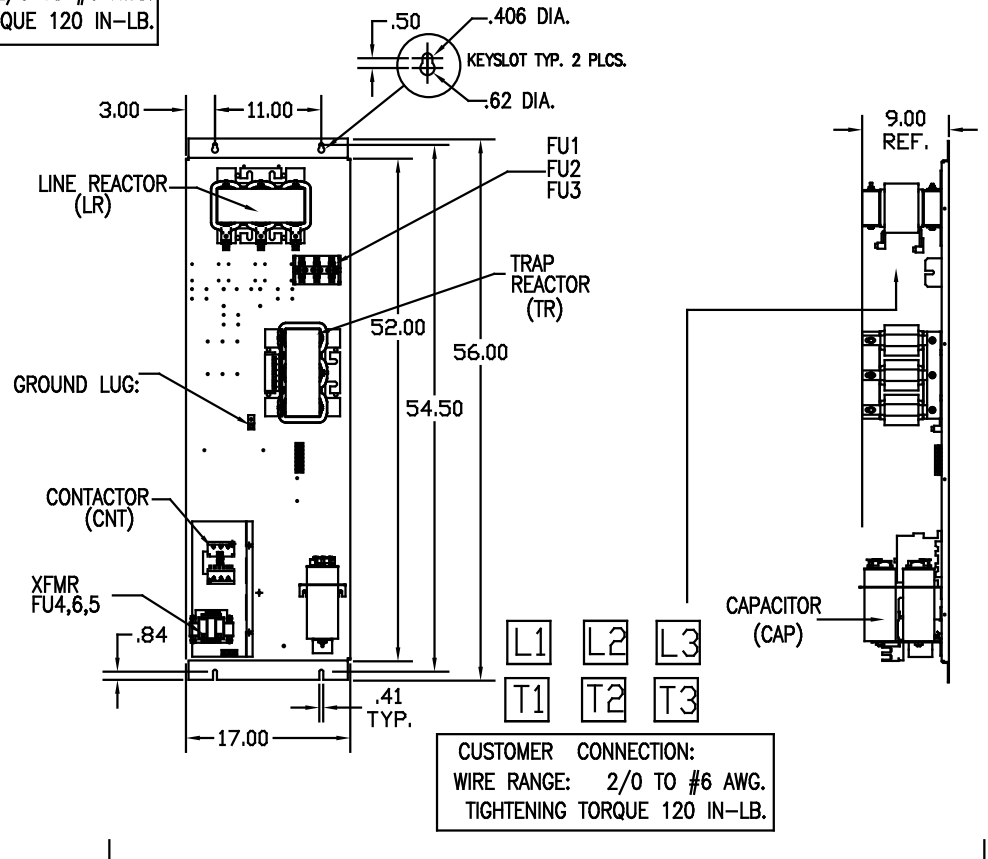


SEE 26690 FOR SCHEMATIC



GROUND LUG:
WIRE RANGE: 2/0 TO #6 AWG.
TIGHTENING TORQUE 120 IN-LB.



ENCLOSURE NOT SHOWN

CUSTOMER IS RESPONSIBLE FOR INSTALLATION TO MEET ALL NATIONAL AND LOCAL ELECTRICAL CODES.

				TOLERANCES EXCEPT AS NOTED	TCI 7878 N. 86th STREET MILWAUKEE, WI 53224
				DECIMAL	
				.XX ± .03	HG100AW01STC, 100HP 480/3/60, ENCL, WITH CNT
				.XXX ± .01	
				FRACTIONAL ± 1/32	
				ANGULAR ± 1/2°	
NO	REVISION	DATE	BY	SCALE TO SCALE	DSW DATE 7/21/08 DWS MEL C 103510DG SHT. 1 OF 1