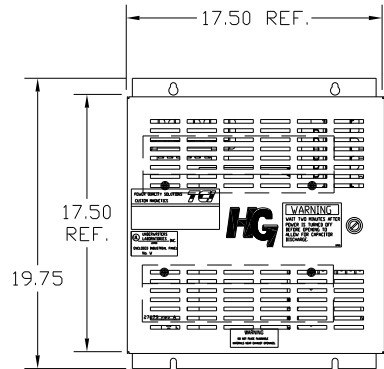
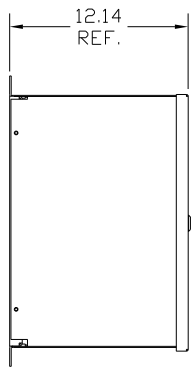


UNIT SPECIFICATIONS:					
KW	HARMONIC	VOLT	HZ	PHASE	FLA
7.5	5TH	400	50	3	16
ENCLOSURE		NEMA 1			
APPROX.WT. LBS.		74			

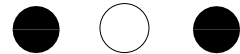
SYMBOL	TCI PART NUMBER
LR	KDRE31T
TR	KTR2L55HG
CAP, 1.. (5 KVAR)	KCAP5A6A
XFMR.	24385
Fu1, 2, 3	22927
Fu4,6	13180
Fu5	13364
CNT	12434

SEE DWG# 27703 FOR SCHEMATIC

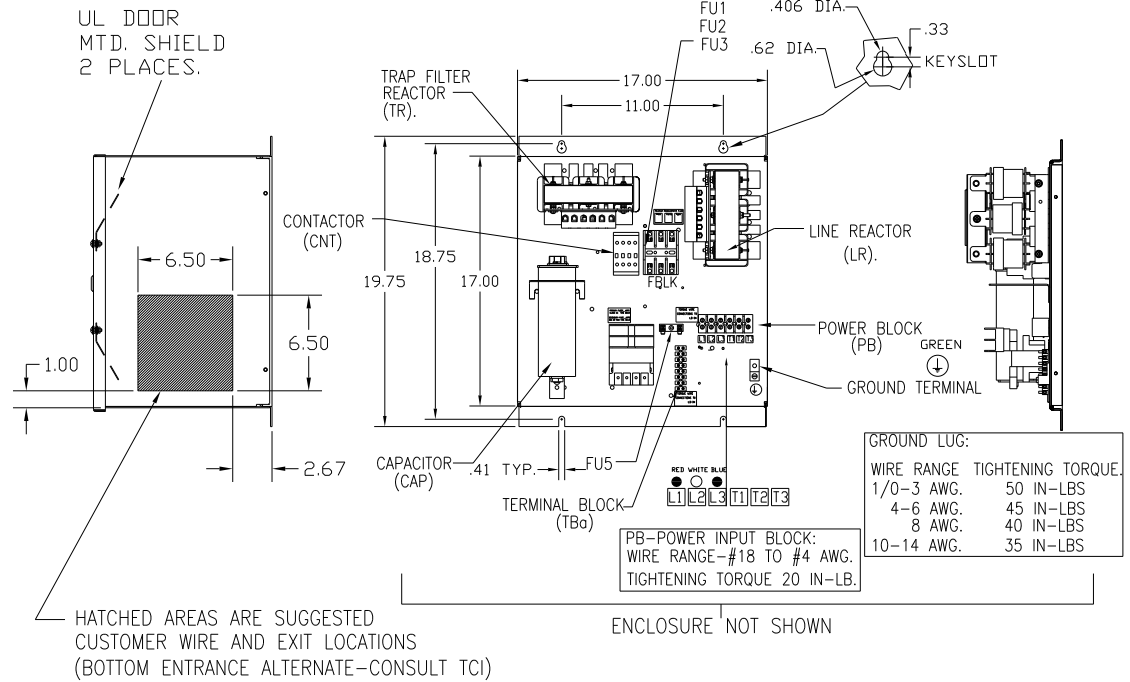


L1 L2 L3

RED WHITE



BLUE



CUSTOMER IS RESPONSIBLE FOR INSTALLATION TO MEET ALL NATIONAL AND LOCAL ELECTRICAL CODES.

TOLERANCES (EXCEPT AS NOTED)				TOLERANCES (EXCEPT AS NOTED)	
DECIMAL				DECIMAL	
				XX ± .03	
				XXX ± .01	
				FRACTIONAL	
				± 1/32	
				ANGULAR	
				± 1/2°	
A	AS BUILT	5/12/11	DSW	DRN. BY	DATE
NO	REVISION	DATE	BY	SCALE	APRVD
				TO FIT	

7878 N. 86th STREET
MILWAUKEE, WI 53224

HG7LW01STC, 7.5KW
400/3/50, ENCLOSED.

DRN. NO. 104666DG
DATE 5/12/11
APRVD

SHT. 1 OF 1