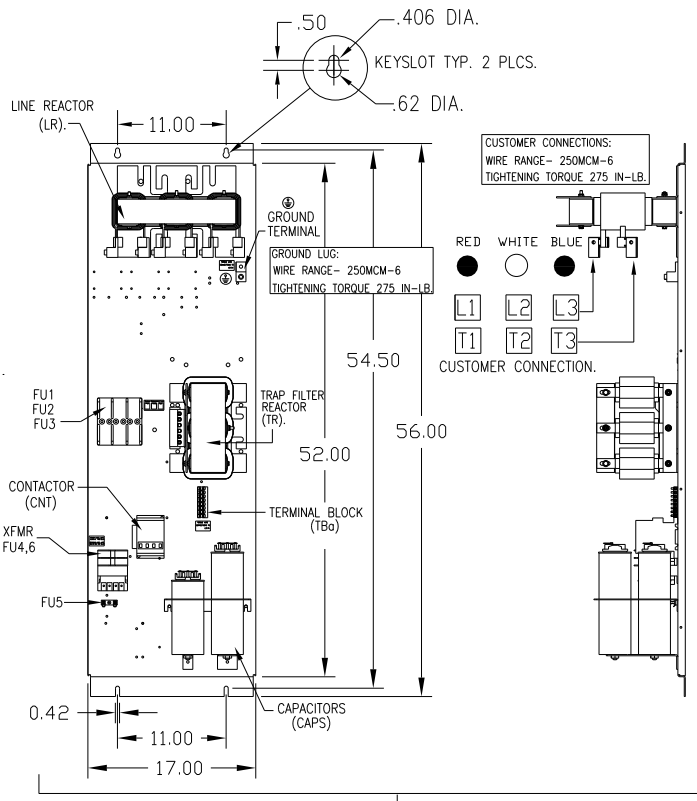
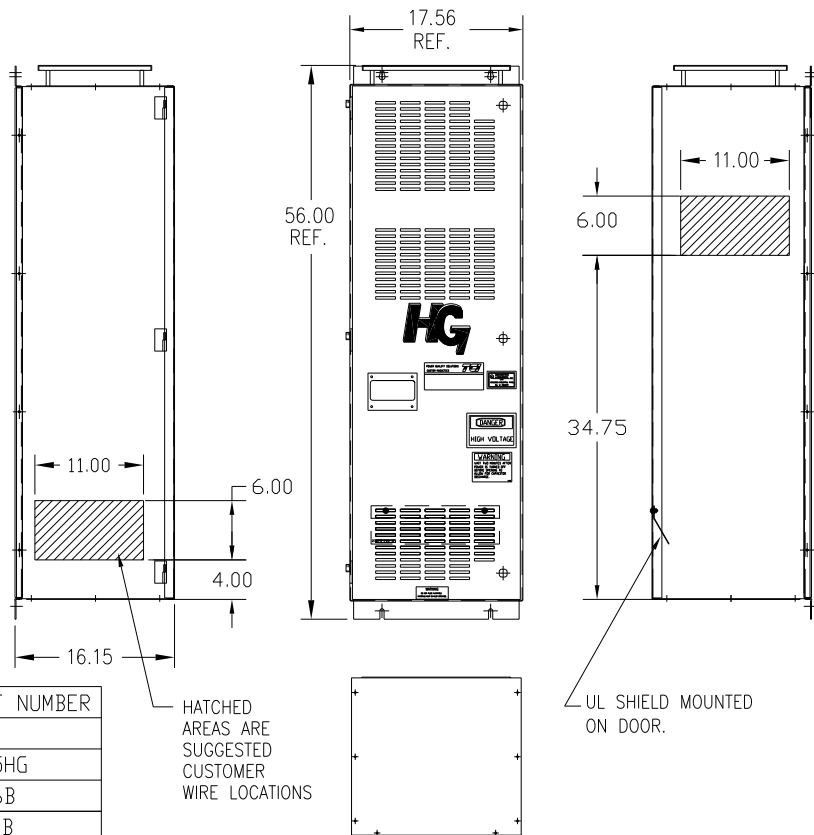
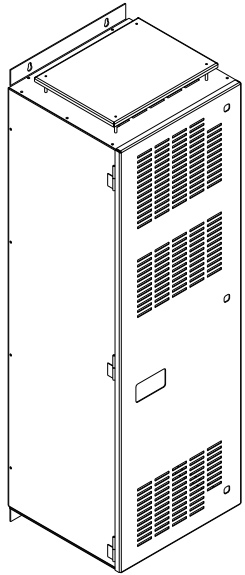


| UNIT SPECIFICATIONS: |          |        |    |       |     |
|----------------------|----------|--------|----|-------|-----|
| KW                   | HARMONIC | VOLT   | HZ | PHASE | FLA |
| 75                   | 5TH      | 400    | 50 | 3     | 145 |
| ENCLOSURE            |          | NEMA 1 |    |       |     |
| APPROX.WT. LBS.      |          | 310    |    |       |     |



| SYMBOL            | TCI PART NUMBER |
|-------------------|-----------------|
| LR                | KDRL31T         |
| TR                | KTR30L55HG      |
| CAP1, 2 (20 KVAR) | KCAP20A6B       |
| CAP3. (15 KVAR)   | KCAP15A6B       |
| XFMR.             | 24385           |
| Fu1, 2, 3         | 27552           |
| Fu4,6             | 13180           |
| Fu5               | 24011           |
| CNT               | 22980           |

HATCHED AREAS ARE SUGGESTED CUSTOMER WIRE LOCATIONS

UL SHIELD MOUNTED ON DOOR.

ENCLOSURE NOT SHOWN

CUSTOMER IS RESPONSIBLE FOR INSTALLATION TO MEET ALL NATIONAL AND LOCAL ELECTRICAL CODES.

SEE DRAWING# 27703 FOR SCHEMATIC

|    |          |          |     | TOLERANCES (EXCEPT AS NOTED): |  | TCI 7878 N. 86th STREET MILWAUKEE, WI 53224   |  |
|----|----------|----------|-----|-------------------------------|--|---|--|
|    |          |          |     | DECIMAL                       |  | HG75LW01STC, 75KW 400/3/50, ENCLOSED, W/CNT   |  |
|    |          |          |     | .XX ± .03                     |  | DRN. BY DSW DATE 11/11/2010 DWG. NO. 104535DG |  |
|    |          |          |     | .XXX ± .01                    |  | SCALE TO FIT                                  |  |
|    |          |          |     | FRACTIONAL ± 1/32             |  | APRVE. C                                      |  |
| A  | AS BUILT | 11/04/10 | DSW | ANGULAR ± 1/2°                |  |   |  |
| NO | REVISION | DATE     | BY  |                               |  |   |  |