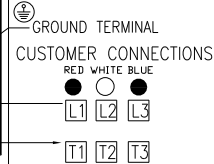
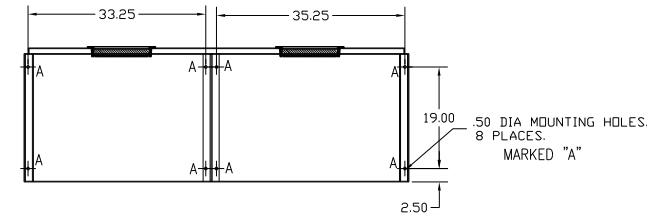
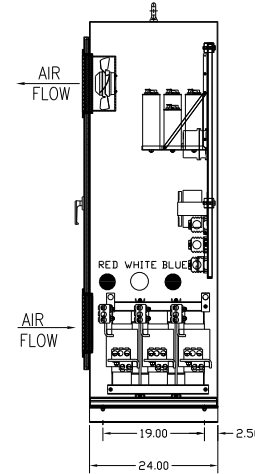
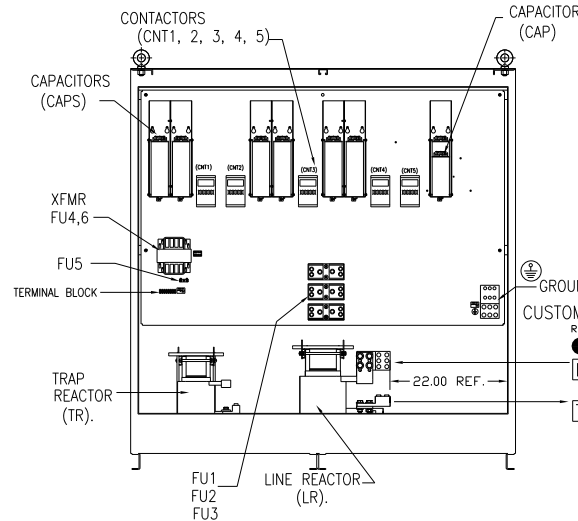
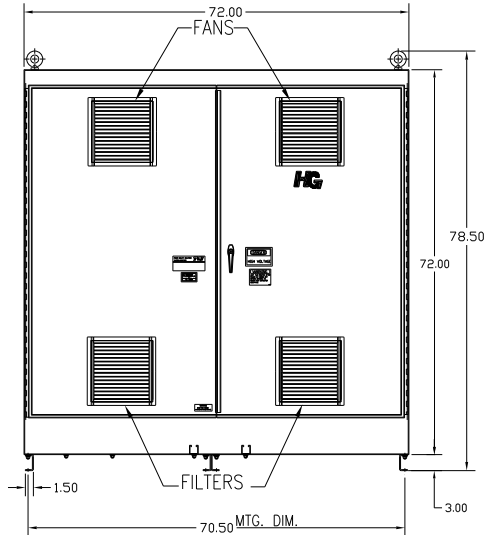
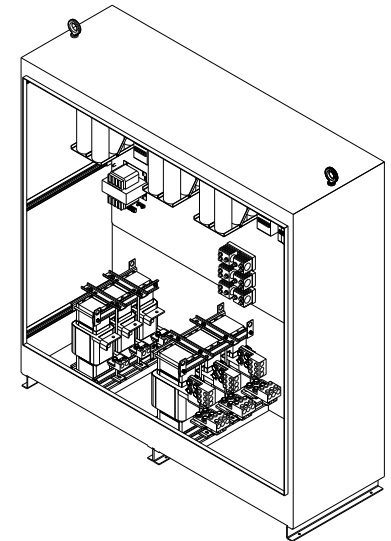
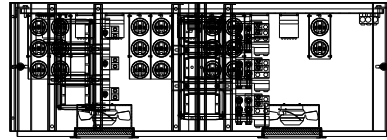


HG560LW01STC

UNIT SPECIFICATIONS:					
KW	HARMONIC	VOLT	HZ	PHASE	FLA
560	5TH	400	50	3	970
ENCLOSURE		NEMA 1			
APPROX.WT. LBS.		1710			

FOR SCHEMATIC SEE DWG# 27703-1



CUSTOMER CONNECTIONS:
WIRE RANGE-THREE 800MCM-350MCM
TIGHTENING TORQUE 275 IN-LB.

GROUND LUG:
WIRE RANGE-THREE 800MCM-350MCM
TIGHTENING TORQUE 275 IN-LB.

CUSTOMER IS RESPONSIBLE FOR INSTALLATION TO MEET ALL NATIONAL AND LOCAL ELECTRICAL CODES.

SYMBOL	TCI PART NUMBER
LR	KDRY33T
TR	KTR226L55HG
CAP1-19 (20 KVAR)	KCAP20A6B
CAP20 (10 KVAR)	KCAP10A6B
XFMR.	24879
Fu1, 2, 3	13330
Fu4,6	26122
Fu5	13167
CNT1, 2, 3, 4, 5	19246

TOLERANCES (EXCEPT AS NOTED)			
			DECIMAL
			.XX ± .03
			.XXX ± .01
			FRACTIONAL ± 1/32
			ANGULAR ± 1/2°
A	AS BUILT	4/01/11	DSW
NO	REVISION	DATE	BY

TCI 7878 N. 86th STREET
MILWAUKEE, WI 53224

TCI, HG7 Standard, 560kW
400/3/50, Type1, CNT.

DRN BY: DSW DATE: 4/1/2011 DWG NO: B 104676DG
SCALE: -- APPRVD: SHT. 1 OF 1